



Sussex Gardens, W2

£750,000

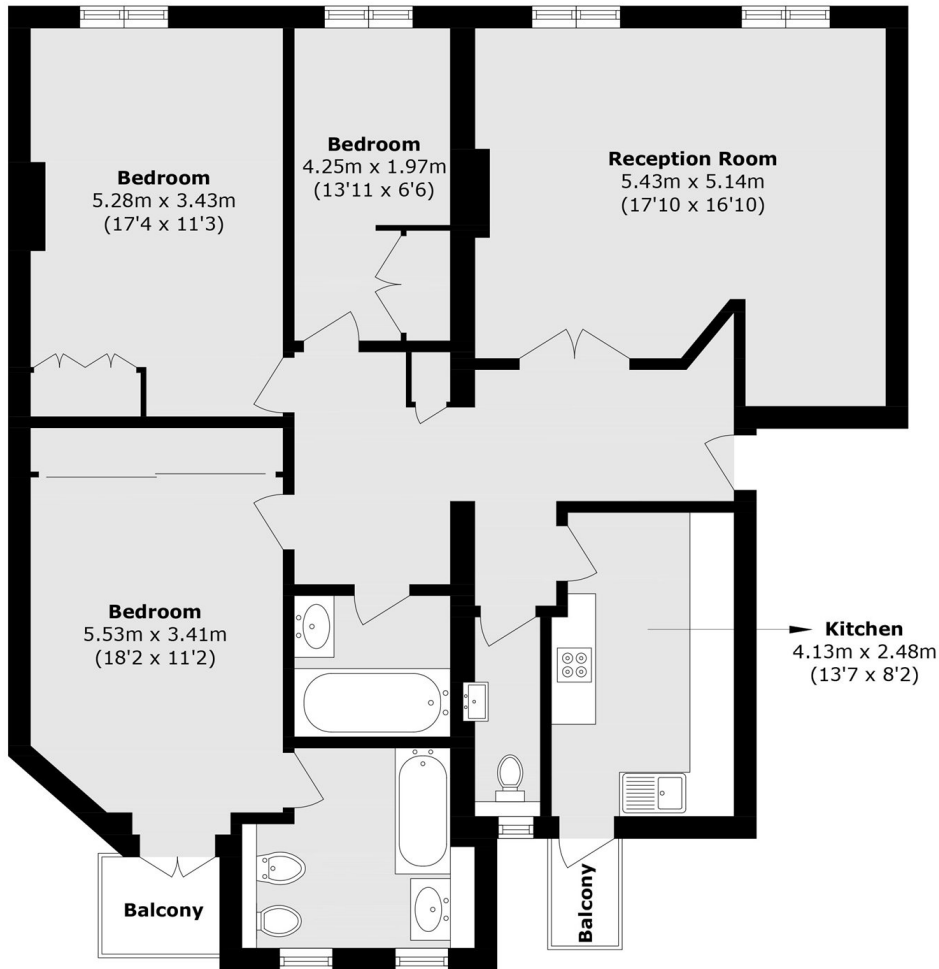
An incredibly spacious, unmodernised three bedroom flat on the second floor offering over 1240 Sq.Ft of living space. The property offers high ceilings throughout, two balcony's and is perfect for anyone looking to modernise and reconfigure (subject to the usual consents). Please note, the lease expires 25/03/2080.

Sussex Gardens is on the doorstep of Hyde Park, with easy access to Lancaster Gate and Paddington Station for the Heathrow Express. Locally there's plenty of local shops and restaurants to choose from.

Features

- Three Bedrooms
- Two Bathrooms
- Lift
- Over 1240 Sq.Ft
- Lease Expires 25/03/2080
- High Ceilings
- Hyde Park

Sussex Gardens, London, W2



Second Floor

Total area (approx): 116.0 sq. m (1248.6 sq. ft)
Balcony total (approx): 3.4 sq. m (36.5 sq. ft)