



Queens Crescent, NW5

£600,000

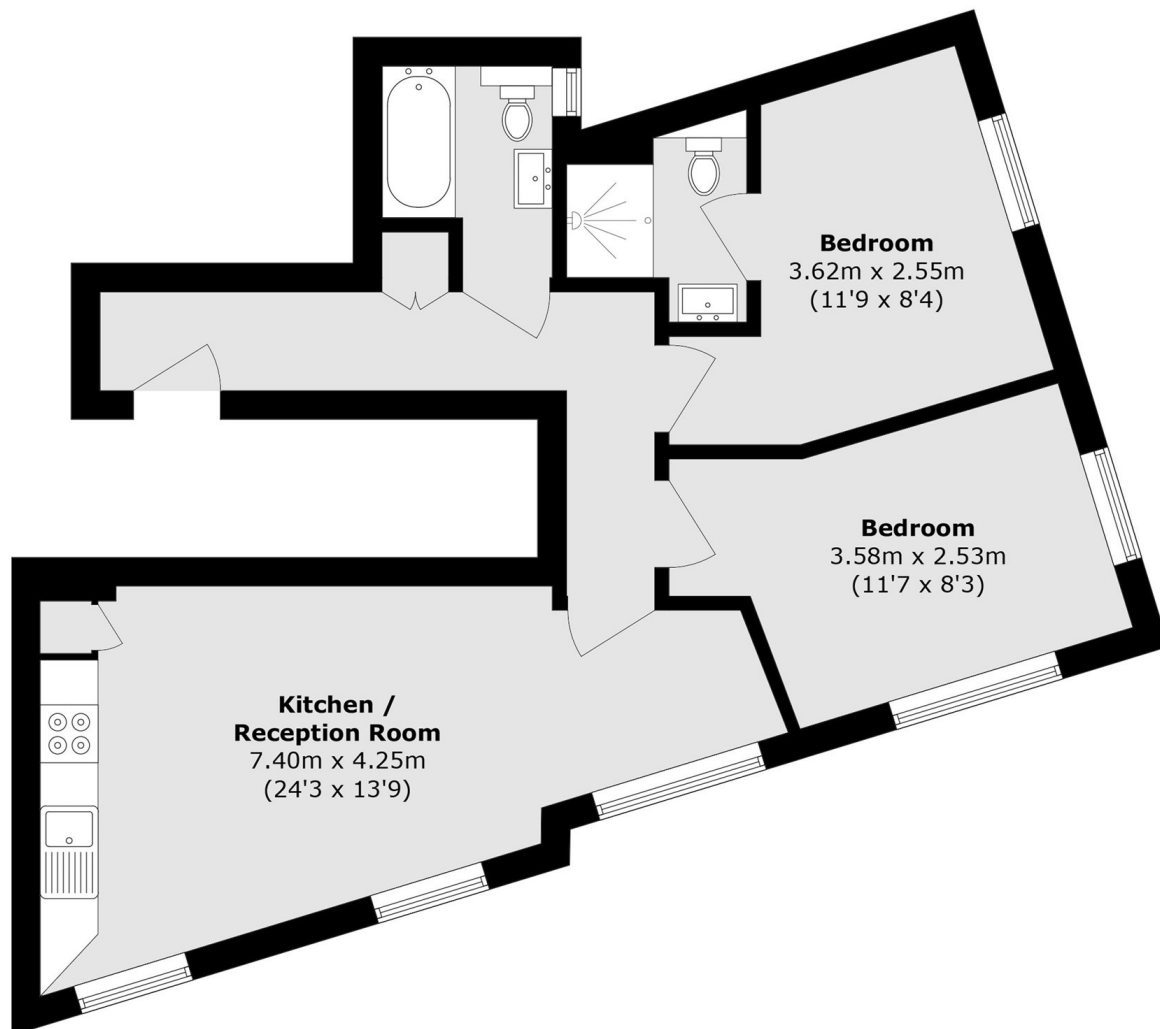
A two double bedroom, two bathroom first floor apartment in great condition throughout. The apartment has an open plan reception room/kitchen, high ceilings and lots of windows letting in plenty of natural light.

Queens Crescent is in a quiet cul-de-sac, close to the shops, cafés and restaurants of Belsize Park & Camden Town. Nearby transport links include Chalk Farm and Belsize Park stations (Northern line).

Features

- Two Bedrooms
- Two Bathrooms
- High Ceilings
- First Floor
- Leasehold
- Great Condition

Queens Crescent, London, NW5



Total area (approx.): 60.3 sq. m (649.1 sq. ft)