



HAWTHORNE CRESCENT, SE10

£360,000

Modern apartment
Large double bedroom
Convenient location
Private balcony
Communal garden
Energy rating: b

@marshandparsons
marshandparsons.co.uk

MARSH &
PARSONS



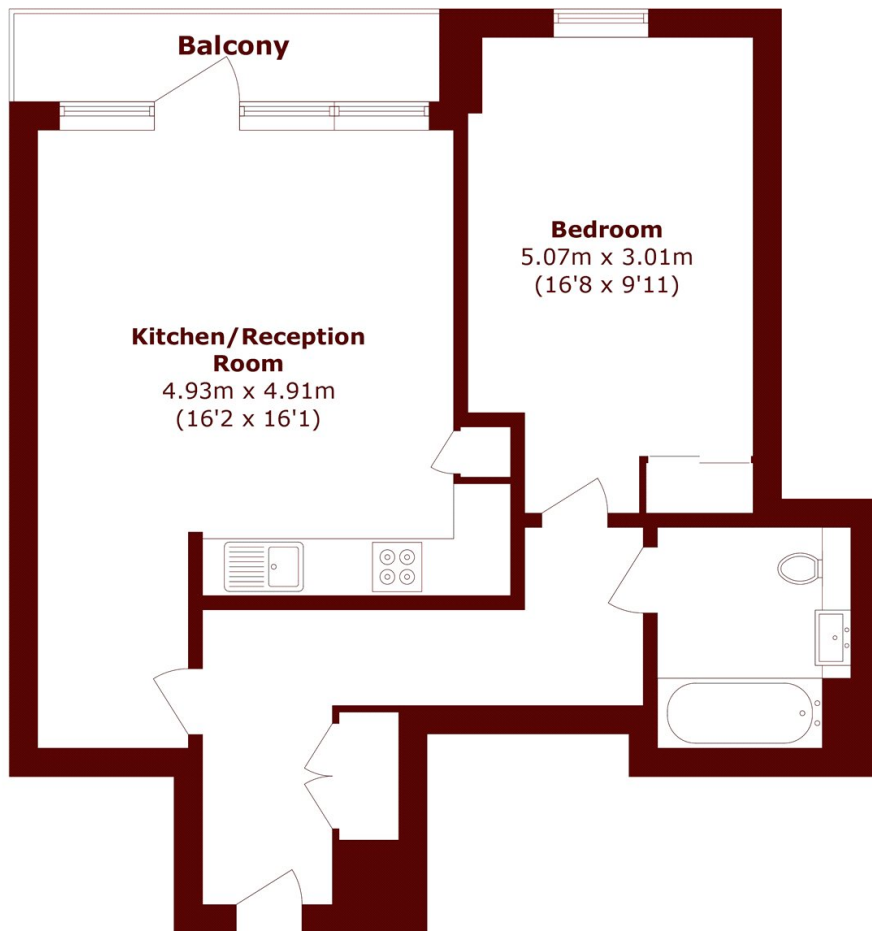
ABOUT THE PROPERTY

A very spacious and modern apartment featuring a large double bedroom with a tall fitted wardrobe, a sleek contemporary bathroom, and an open plan kitchen with fully integrated appliances. The generous lounge/diner opens onto a west facing, covered private balcony. Additional benefits include wood flooring throughout, a large storage/utility cupboard, and access to residents-only communal gardens.

The property is conveniently located just a short walk from a wide range of shops, Maze Hill mainline station, and the open green spaces of Greenwich park. Greenwich town centre and North Greenwich underground station are also within easy reach.



STEP INSIDE HAWTHORNE CRESCENT



Total area (approx.): 56.7 sq. m (610.3 sq. ft)
Balcony area (approx.): 5.2 sq. m (55.9 sq. ft)

Greenwich
020 8312 8312

Energy Rating: B We aim to make our particulars both accurate and reliable. However, they are not guaranteed; nor do they form part of an offer or contract. If you require clarification on any points then please contact us, especially if you're traveling some distance to view. Please note that appliances and heating systems have not been tested and therefore no warranties can be given as to their good working order

**MARSH &
PARSONS**