



Seren Park Gardens, SE3

£325,000

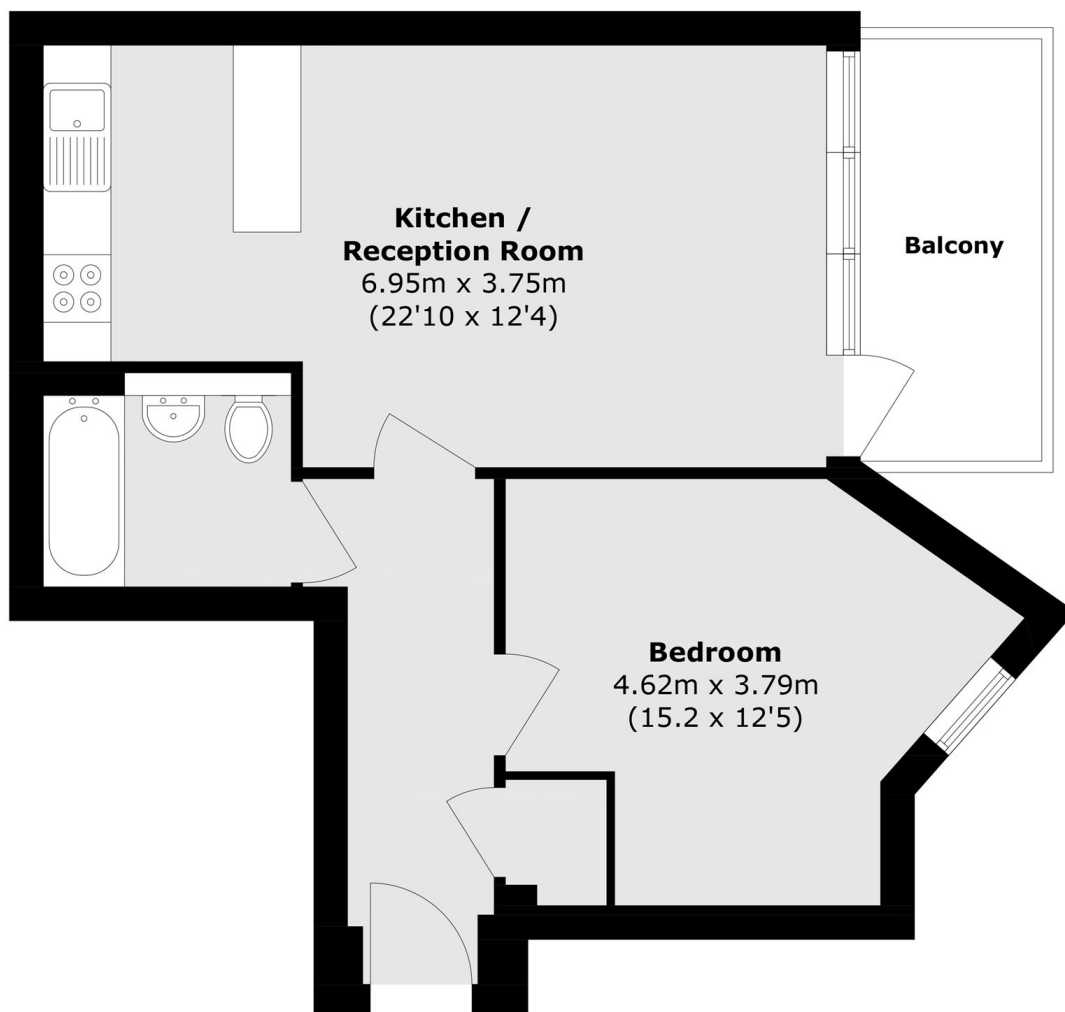
Located on the second floor of a contemporary development, this spacious apartment features an expansive open-plan kitchen and reception area, leading out to a balcony that overlooks a serene woodland setting. The property also includes a large double bedroom, ample storage throughout, and the added benefit of a private parking space. The property will be sold with no onward chain, offering a seamless and hassle-free move, ready for you to settle in immediately.

Nestled in a peaceful cul-de-sac, this property is ideally located just 0.2 miles from Maze Hill Station and the expansive greenery of Greenwich Park. It's also a short distance from the heart of Greenwich, offering convenient access to the North Greenwich Jubilee Line, making it a perfect blend of tranquility and connectivity.

Features

- One Bedroom Flat
- Private Balcony
- Stunning Condition Throughout
- Minutes From Greenwich Park
- Minutes From Maze Hill Station
- Chain Free

Seren Park Gardens, London, SE3



Total area (approx.): 49.6 sq. m (533.8 sq. ft)
Balcony area (approx.): 6.0 sq. m (64.5 sq. ft)