



West Grove, SE10  
£1,950,000

**Dexters**



## West Grove, SE10

Situated on one of Prime West Greenwich's most sought-after roads, this exceptional four/ five bedroom split-level period maisonette on West Grove offers an impressive blend of character, space and contemporary finish, extending to approximately 2,658 sq. Ft. Beautifully presented throughout and finished to a high standard, the property is arranged over three spacious levels and offers versatile accommodation ideal for both family living and entertaining and is offered to the market chain free.

The lower ground floor features a stunning open-plan kitchen/dining room with a large bay frontage and direct access to a private landscaped garden, creating the perfect indoor/outdoor living space. This level also benefits from a generous double bedroom, utility room and modern family bathroom. The ground floor provides two substantial reception rooms filled with natural light, along with a separate office space ideal for home working. From the upper levels, the property enjoys far-reaching city views which further enhance its appeal. The first floor comprises two further well-proportioned double bedrooms and an additional contemporary bathroom, with the principal rooms retaining attractive period proportions and charm throughout. Further benefits include a private outbuilding and a cellar.

West Grove is perfectly positioned in the heart of West Greenwich, moments from Greenwich Park, the town centre and mainline/DLR transport links, with the property being within easy reach of an array of independent cafés,

### Features

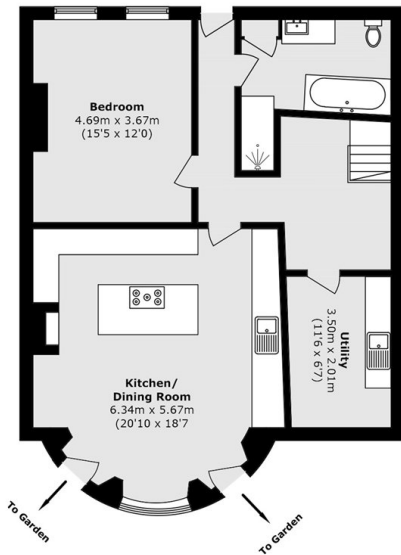
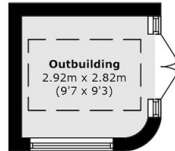
- Private Garden
- Sought After Location
- Amazing City Views
- No Work Required
- Period Features Throughout
- Share Of Freehold



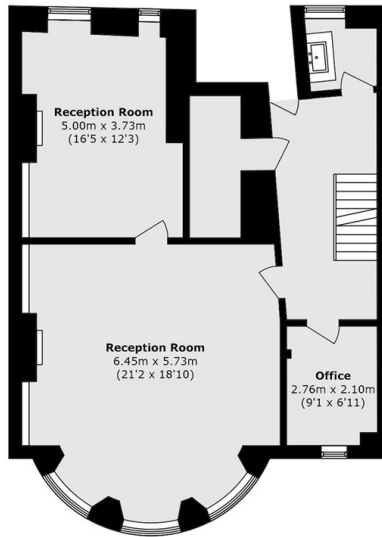




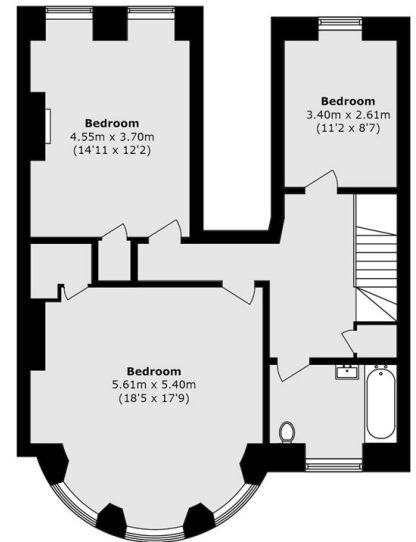
# West Grove, London, SE10



**Lower Ground Floor**



**Ground Floor**



**First Floor**

Total Area (approx.): 247.0 sq. m (2658.7 sq. ft)  
Outbuilding area (approx.): 8.1 sq. m (87.1 sq. ft)