



166 St. Johns Road, Chesterfield, S41 8PE

Offers In The Region Of £199,950

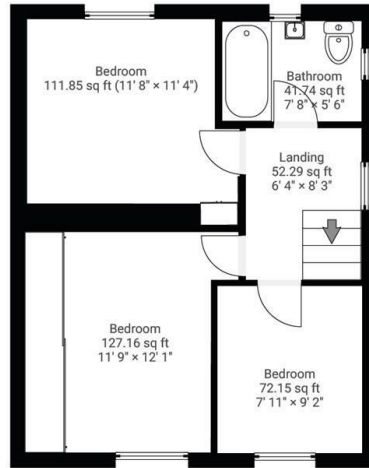
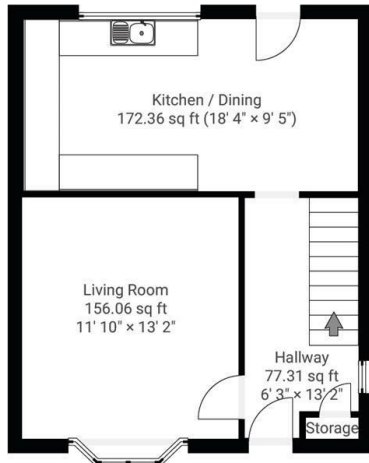
- Located in the popular area of Newbold
- Enclosed rear garden area with lawn and patio seating area
- Kitchen diner with access into the garden
- Large loft area with potential to convert
- 3 Bedroom semi detached home
- Ideal for families or 1st time buyers
- Bay windowed lounge
- Gnerous front with ample parking spaces
- Offered for sale with no chain
- Tiled bathroom

St Johns Road, S41

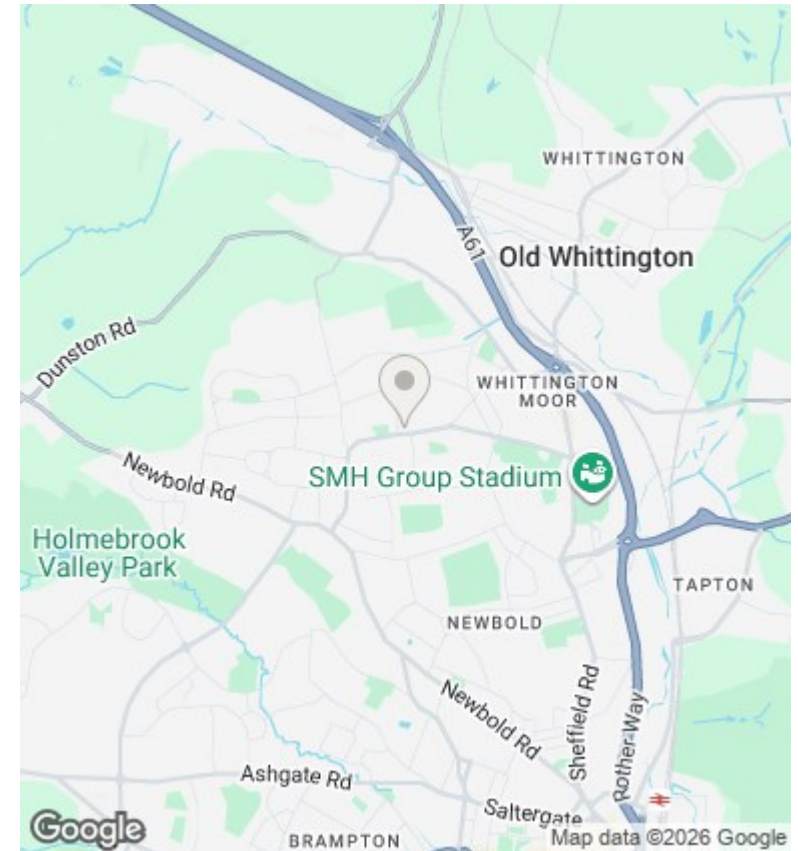
DETAILS
Total area: 813.48 sq ft

▼ **Ground Floor** TOTAL AREA: 408.58 sq ft

▼ **1st Floor** TOTAL AREA: 404.91 sq ft



This floorplan is provided without any warranty. The actual size of dimensions may vary and this floorplan is intended for illustrative purposes only.



Directions

Viewings

Viewings by arrangement only. Call 01246 276 276 to make an appointment.

Council Tax Band

EPC Rating:

Energy Efficiency Rating		
	Current	Potential
<i>Very energy efficient - lower running costs</i>		
(92 plus) A		
(81-91) B		
(69-80) C		
(55-68) D		
(39-54) E		
(21-38) F		
(1-20) G		
<i>Not energy efficient - higher running costs</i>		
England & Wales	EU Directive 2002/91/EC	