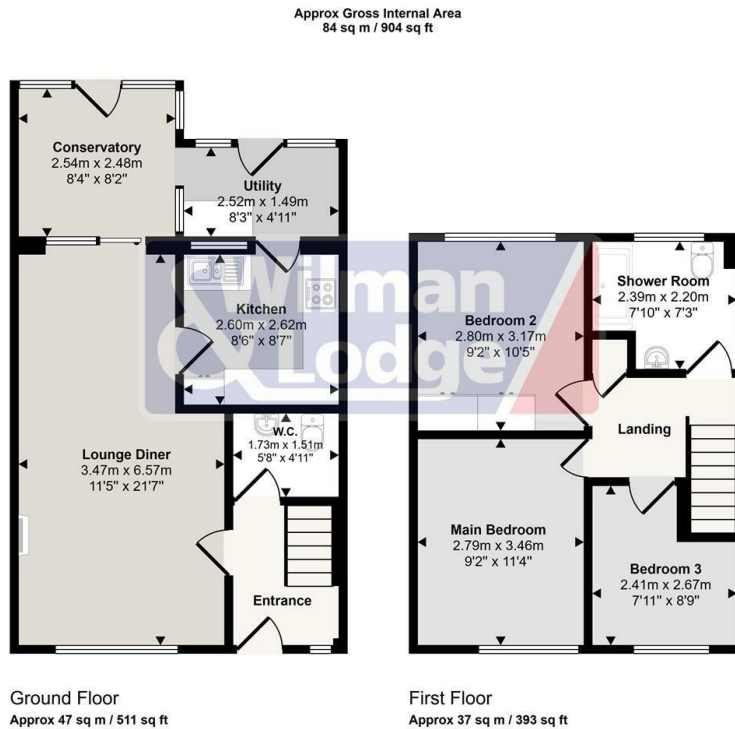




2 Holme Ghyll Colne Road, Glusburn, BD20 8RG

Asking Price £239,950

- STONE BUILT TOWNHOUSE
- OFF ROAD PARKING
- READY TO MOVE IN
- SUPERB TRANSPORT AND COMMUTING LINKS
- THREE BEDROOMS
- A TERRACED GARDEN TO THE REAR
- LOVINGLY UPGRADED BY CURRENT OWNERS
- PRIVATE GARAGE
- ATTRACTIVE OPEN-PLAN FRONT GARDEN
- EXCELLENT VILLAGE AMENITIES



This floorplan is only for illustrative purposes and is not to scale. Measurements of rooms, doors, windows, and any items are approximate and no responsibility is taken for any error, omission or mis-statement. Icons of items such as bathroom suites are representations only and may not look like the real items. Made with Made Snappy 360.



Directions

Viewings

Viewings by arrangement only. Call 01535 636238 to make an appointment.

Council Tax Band

C

EPC Rating:

C

Energy Efficiency Rating		Current	Potential
Very energy efficient - lower running costs			
(92 plus)	A		
(81-91)	B		88
(69-80)	C	72	
(55-68)	D		
(39-54)	E		
(21-38)	F		
(1-20)	G		
Not energy efficient - higher running costs			
England & Wales		EU Directive 2002/91/EC	