



3 Buckingham Place, Bristol, BS8 1LH

£310,000

- Two Bedroom Apartment
- Popular Location
- Energy Rating - D
- Grade II* Listed
- 968 Year Remaining Lease

Situated in Clifton and within 0.5 mile of the amenities that Queens Road & Park Street have to offer, this conveniently located two bedroom flat offers you the opportunity to move into a property full of original features, which along with the Georgian exterior, provide an attractive space in central Bristol.

With views across the city, a kitchen with ample space, separate lounge space, a large main bedroom, handy second bedroom and bathroom.

There is also a first come first serve for parking with three spaces available between all the flats.

Living Room 14'6" x 10'10" (4.43 x 3.31)

Bedroom One 14'4" x 10'9" (4.38 x 3.3)

Bedroom Two 10'5" x 6'6" (3.2 x 2)

Kitchen 9'4" x 7'9" (2.85 x 2.38)

Bathroom 6'4" x 4'5" (1.94 x 1.35)

Council Tax Band - B

Leasehold - 968 Years Left

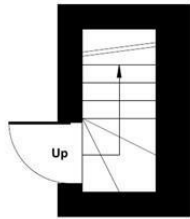
Grade II* Listed



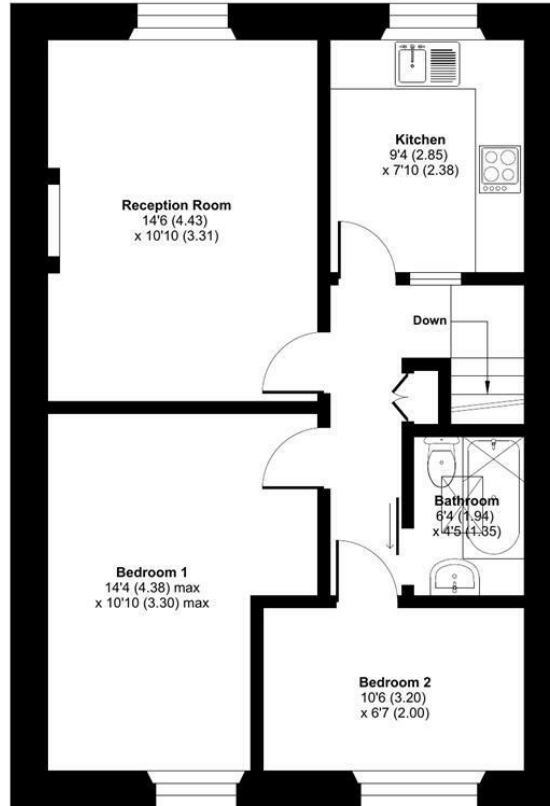


Buckingham Place, Clifton, Bristol, BS8

Approximate Area = 582 sq ft / 54 sq m
For identification only - Not to scale

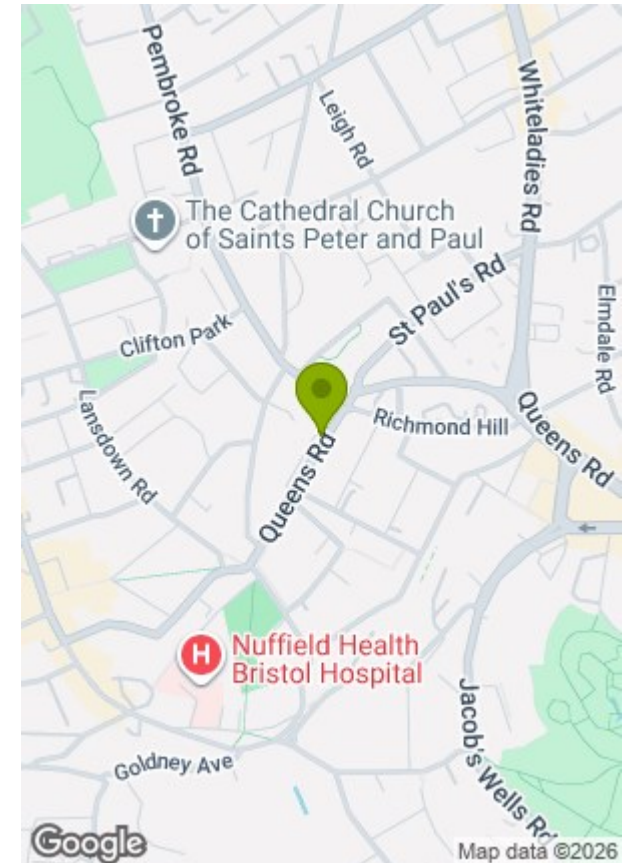


SECOND FLOOR



THIRD FLOOR

Floor plan produced in accordance with RICS Property Measurement 2nd Edition, Incorporating International Property Measurement Standards (IPMS2 Residential). © nichecom 2025. GREENWOODS SALES • LETTINGS • COMMERCIAL



Energy Efficiency Rating		
	Current	Potential
Very energy efficient - lower running costs		
(92 plus) A		
(81-91) B		
(69-80) C		
(55-68) D		
(39-54) E		
(21-38) F		
(1-20) G		
Not energy efficient - higher running costs		
	63	81
England & Wales	EU Directive 2002/91/EC	EU Directive 2002/91/EC

Environmental Impact (CO ₂) Rating		
	Current	Potential
Very environmentally friendly - lower CO ₂ emissions		
(82 plus) A		
(61-81) B		
(40-60) C		
(21-39) D		
(12-20) E		
(1-11) F		
(0) G		
Not environmentally friendly - higher CO ₂ emissions		
England & Wales	EU Directive 2002/91/EC	EU Directive 2002/91/EC

These particulars, whilst believed to be accurate are set out as a general outline only for guidance and do not constitute any part of an offer or contract. Intending purchasers should not rely on them as statements of representation of fact, but must satisfy themselves by inspection or otherwise as to their accuracy. No person in this firms employment has the authority to make or give any representation or warranty in respect of the property.