



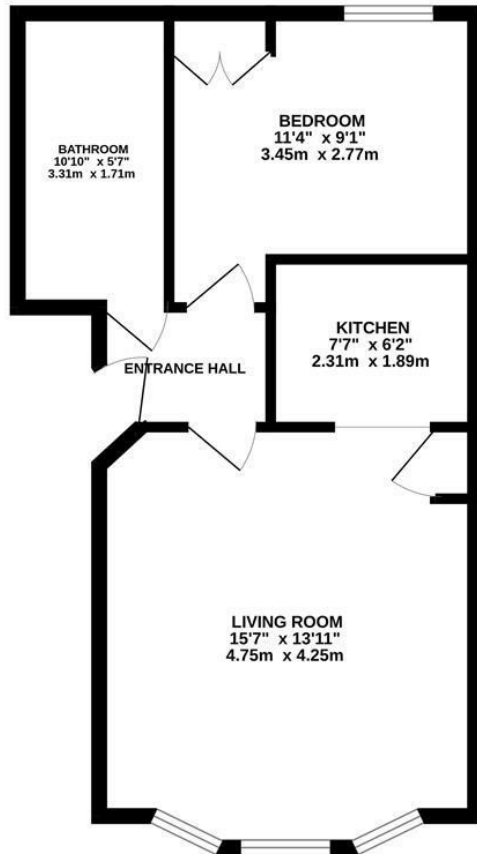
Ashburnham Road, Hastings TN35 5JN

Offers in excess of £150,000



A stylish one bedroom GROUND FLOOR APARTMENT located in the sought after Clive Vale setting. It's enviably positioned for easy access to Hastings Old Town, Hastings Country Park and nearby primary schools. The accommodation here is arranged as a BAY FRONTED LIVING SPACE which measures an impressive 15'7 x 13'11 and is open to the MODERN FITTED KITCHEN. There is a BRIGHT DOUBLE BEDROOM positioned at the rear of the property which enjoys a large window and a separate bathroom with a bath and shower over. Externally the property benefits from access to the COMMUNAL GARDEN and OUTDOOR BIKE STORAGE. A particular benefit worth noting is that the leaseholders have setup a RIGHT TO MANAGE COMPANY. Being sold with NO ONWARD CHAIN this fantastic property would make the perfect SEASIDE RETREAT or FIRST TIME HOME.

GROUND FLOOR
452 sq.ft. (42.0 sq.m.) approx.



TOTAL FLOOR AREA: 452 sq.ft. (42.0 sq.m.) approx.

Whilst every attempt has been made to ensure the accuracy of the floorplan contained here, measurements of doors, windows, rooms and any other items are approximate and no responsibility is taken for any error, omission or mis-statement. This plan is for illustrative purposes only and should be used as such by any prospective purchaser. The services, systems and appliances shown have not been tested and no guarantee as to their operability or efficiency can be given.
Made with Metropix ©2025

