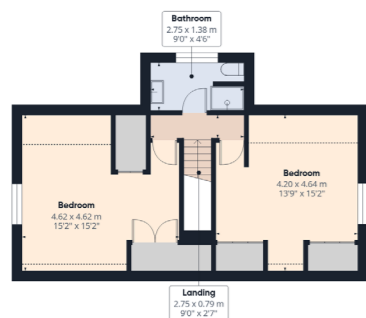




Guide Price £400,000 - £415,000

Kingsway Avenue,
Paignton, TQ4 7AD

A fantastic four bedroom detached dormer bungalow situated in the highly sought-after area of White Rock. This well-positioned home offers level access throughout, making it particularly suitable for those seeking ease of living. The property is conveniently located within a short walking distance to a range of local amenities including supermarkets, a doctor's surgery, dentist and pharmacy, as well as being close to well-regarded schools such as White Rock Primary and Roselands Primary. Offering spacious and versatile accommodation, along with a generous rear garden and ample parking, this is an ideal family home.



GROUND FLOOR

ENTRANCE HALLWAY Accessed via a UPVC double glazed door into a large entrance hallway, benefiting from a great size storage cupboard ideal for shoes and coats.

BEDROOM FOUR A great sized double bedroom with radiator and UPVC double glazed window.

BATHROOM A well-appointed bathroom featuring a large corner bath, large walk-in shower unit, vanity wash basin, WC, heated towel rail, tiled walls and a UPVC double glazed frosted window.

BEDROOM THREE A spacious double bedroom with a large UPVC double glazed window overlooking the south-facing rear garden, radiator and a bright, airy feel.

LOUNGE A light and open living space with UPVC double glazed window, electric fire and radiator.

KITCHEN / DINER An open-plan kitchen diner fitted with stone worktops, electric oven, gas hob, stainless steel sink and space for a dishwasher. The room benefits from a UPVC double glazed window and UPVC door leading to the rear garden.

EXTENSION A bright and versatile additional reception space with radiator, surrounded by UPVC double glazed windows and featuring double patio doors opening onto the rear garden.

UTILITY ROOM Housing the combination boiler, with plumbing for a washing machine and space for a tumble dryer.

FIRST FLOOR

BATHROOM Fitted with tiled walls, walk-in shower, WC, vanity wash basin, heated towel rail and UPVC double glazed frosted window.

BEDROOM ONE A large double bedroom with two large fitted wardrobe units. The room benefits from triple aspect UPVC double glazed windows and Velux windows offering sea views.

BEDROOM TWO A bright and spacious double bedroom with triple aspect UPVC double glazed windows, Velux windows with sea views and useful eaves storage.

OUTSIDE

REAR GARDEN A large south-facing rear garden, partially decked and partially laid to lawn, with an outside shed providing additional storage.

GARAGE A garage fitted with an electric roller door, housing the electric and gas meters along with the consumer unit, ideal for storage.

PARKING A large brick paved driveway to the front provides off-road parking for at least two vehicles, along with a secondary driveway offering space for an additional vehicle.

Address 'Kingsway Avenue, Paignton, TQ4 7AD'

Tenure 'Freehold'

Council Tax Band 'C'

EPC Rating 'TBC'

Taylor's Estate Agents
256 Torquay Road
Paignton
TQ3 2EZ