



Westfield Road, KT6

£725,000

Dexters



Westfield Road, KT6

This mid terrace period house is located in one of Surbiton's premier River Roads. The property has two reception rooms, kitchen, downstairs bathroom and three double bedrooms. There is plenty of scope to extend this wonderful home further (STPP) to create an open plan kitchen/living space.

On the ground floor, there is a bay-fronted reception room with parquet flooring and under floor heating, a separate dining room, family bathroom and a modern fitted kitchen. Upstairs, there are three good sized double bedrooms.

There is plenty of scope to make this property bigger by extending to the rear and first floor (STPP). Outside, there is a private rear garden AstroTurf and patio area, perfect for having a barbeque during the summer.

Book in a viewing before it's too late! Call us on 020 8390 3939, email us at surbitonsales@dexters.co.uk or pop in to our local office and we will be more than happy to help.

Westfield Road is one of Surbiton's premier river roads with everything you need less than half a mile away, including the River Thames, desirable Maple Road, as well as Surbiton Station, which operates a fast train to Waterloo in 16 minutes.

Features

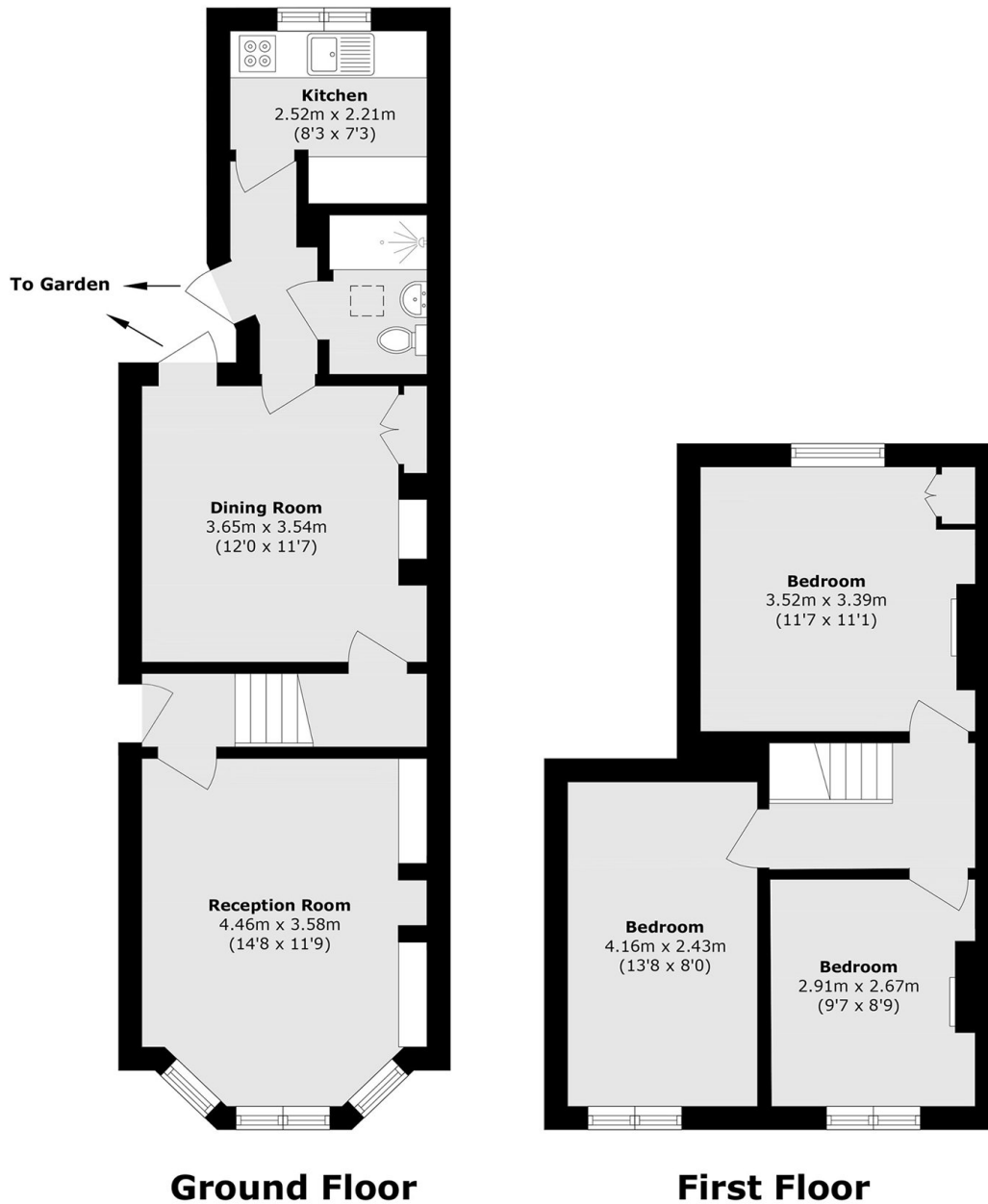
- Victorian House
- Two Receptions
- Three Double Bedrooms
- Scope to Extend (STPP)
- Private Garden
- River Road Location







Westfield Road, Surbiton, KT6



Total area (approx.): 79.1 sq. m (851.4 sq. ft)