



Nightingale Walk,  
Burntwood, WS7 9QR

Offers in the Region Of £170,000



## Offers in the Region Of £170,000



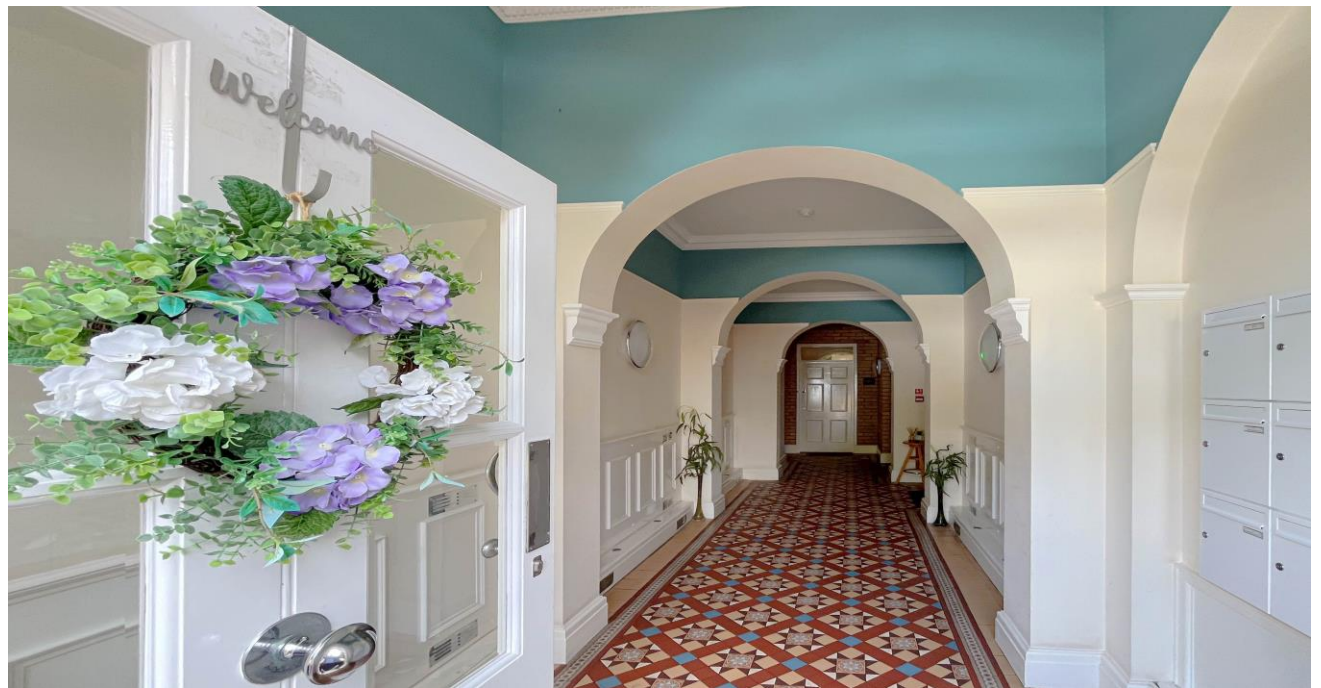
NO CHAIN!! Welcome to Nightingale Court, a characterful first floor apartment situated on the sought after St. Matthews Estate in Burntwood just a short distance from the City of Lichfield.

Internally this lovely property features a welcoming entrance hall with doors to a spacious living room, modern kitchen, generous double bedroom and also a bathroom with separate bath and shower.

Externally you have meticulously maintained communal gardens, an allocated parking space and also pleasant surroundings including a cricket pitch and fields.

Nearby amenities include easily accessible transport links, a handful of shops and also easy commuter links into major cities within a short drive.

With no onward chain this apartment really is something special!!!







## Property Specification

NO CHAIN  
SOUGHT AFTER LOCATION  
ONE BEDROOM  
SPACIOUS LIVING ROOM  
KITCHEN

### Entrance Hall

#### Hall

Living Room 5.46m (17'11") x 3.60m (11'10")

Kitchen 3.86m (12'8") x 2.54m (8'4")

Bedroom 1 5.31m (17'5") x 2.83m (9'3")

#### Bathroom



### Agent's Note:

Every care has been taken with the preparation of these Sales Particulars but they are for general guidance only and complete accuracy cannot be guaranteed. If there is any point which is of particular importance, professional verification should be sought. The mention of any fixtures, fittings and/or appliances does not imply they are in full efficient working order as they have not been tested. All dimensions are approximate. Photographs are reproduced for general information and it cannot be inferred that any item shown is included in the sale. These Sales Particulars do not constitute a contract or part of a contract.  
Came on the market:

### Viewer's Note:

Council tax band: B  
Tenure: Leasehold years remaining: 102 years lease from  
Ground Rent: £271.00  
Service Charge: £1796.00

# Floor Plan

*This floor plan is not drawn to scale and is for illustration purposes only*

## Energy Efficiency Rating



## Map Location

