

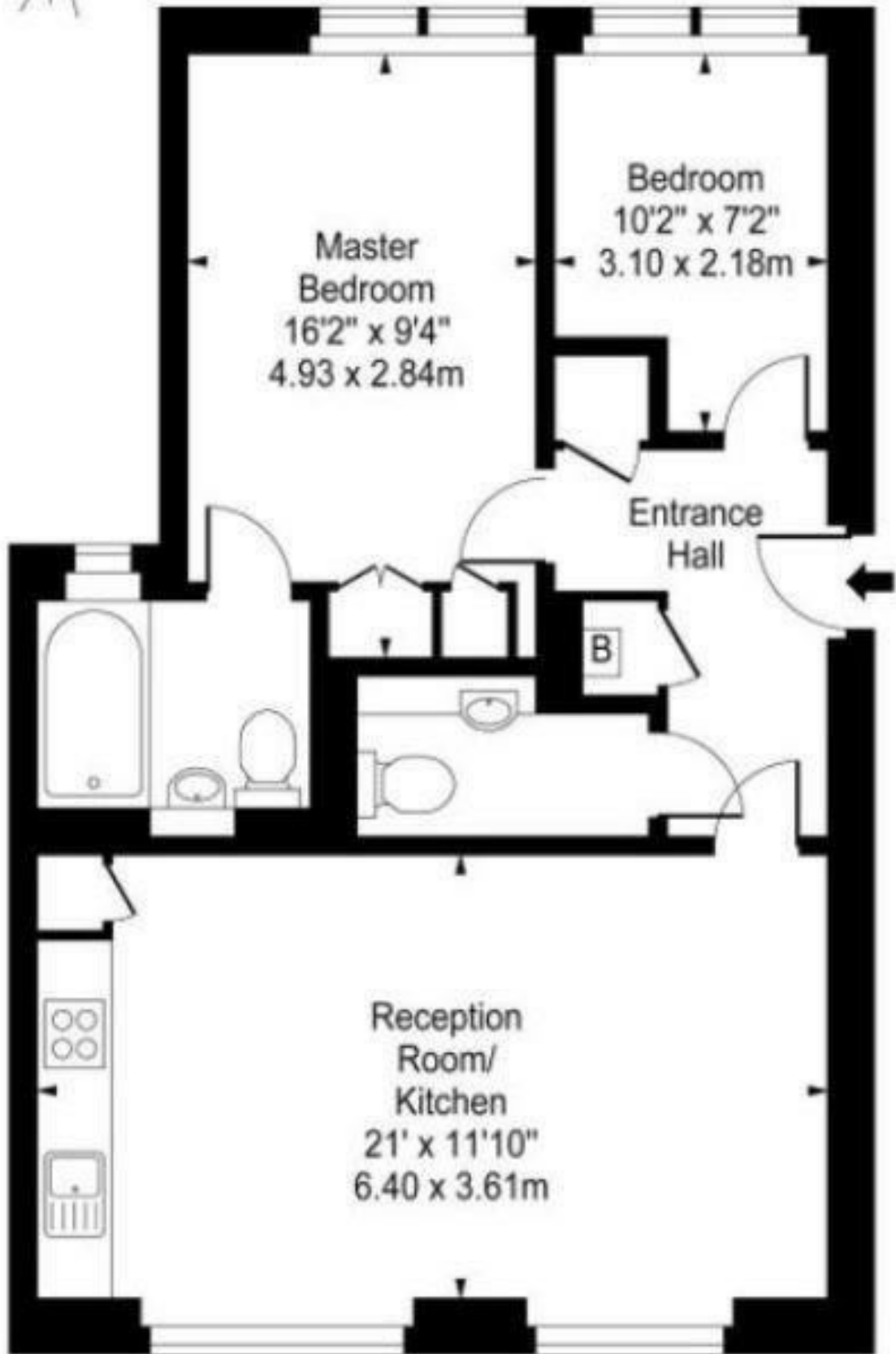


## Oval Road, Primrose Hill, NW1 £4,311 Per Month Furnished/unfurnished

Set in an exclusive block moments from both Regents Park and Camden is this wonderful apartment set on the ground floor with balcony. Finished to a very high standard throughout this luxury, interior designed apartment comprises a bright reception room, very modern kitchen, wooden floors, two bedrooms, bathroom and guest cloakroom. Ideally located being close to Regents Park, Primrose Hill, Camden and London's West End. Close to Regents College.



# Latitude House, Oval Road



Ground Floor

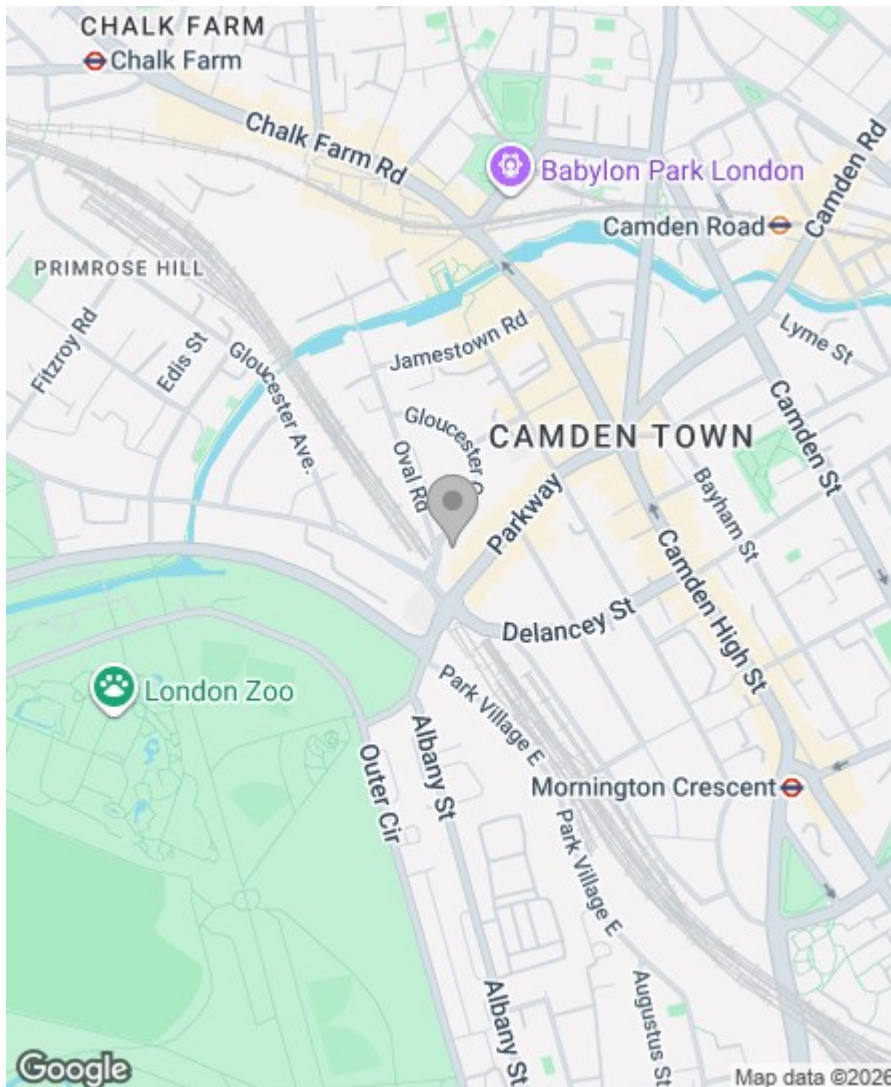
Gross Internal Area - 646 Sq Ft - 60.01 Sq M

## Property Overview


Location	Primrose Hill, NW1
Price	£4,311 Per Month
Bedrooms	2
Bathrooms	1
Receptions	1
Council	Camden
Tax Band	F
Furnishing	Furnished/unfurnished

## Key Features

- Award Winning Development
- Close to Primrose Hill and Camden
- Close to Local Transport Links
- Wood Floors
- Furnished/Unfurnished
- Available 4th July 2026



## Energy Efficiency Rating

	Current	Potential
Very energy efficient - lower running costs		
(92 plus) <b>A</b>		
(81-91) <b>B</b>		
(69-80) <b>C</b>	<b>79</b>	<b>79</b>
(55-68) <b>D</b>		
(39-54) <b>E</b>		
(21-38) <b>F</b>		
(1-20) <b>G</b>		
Not energy efficient - higher running costs		
<b>England &amp; Wales</b>	EU Directive 2002/91/EC 	

Greenstones Estates Ltd  
Registered in England & Wales  
Registered Office:  
5 West Court, Enterprise Road,  
Maidstone, Kent ME15 6JD

Company Registered number  
03513585

Trading address  
83 Boundary Road, St John's Wood,  
London NW8 0RG

We are members of



**IMPORTANT NOTICE:** All of the information is intended only as a guide to a prospective purchaser and does not constitute any part of an offer or contract. Any measurements or distances referred to herein are approximate only. Any information contained herein (whether in the text, plans or photographs) is given in good faith and cannot be relied upon as being a statement or representation of fact. Should you proceed with the purchase of the property, your solicitor must verify these details. We have not carried out a detailed survey nor tested the services, appliances and specific fittings. In accordance with current legislation we would advise you that the measurements on these particulars are imperial. The formula for conversion to metric is as follows:- 1' (one foot) = 30.4cm (centimetres), 1m (one metre) = 3'29 (feet).

