



## Fitzclarence House, W11

£750 per week



- Two Bedroom
- Two bathroom
- Modern Finish
- Separate Kitchen
- Balcony
- Parking By Separate Negotiation









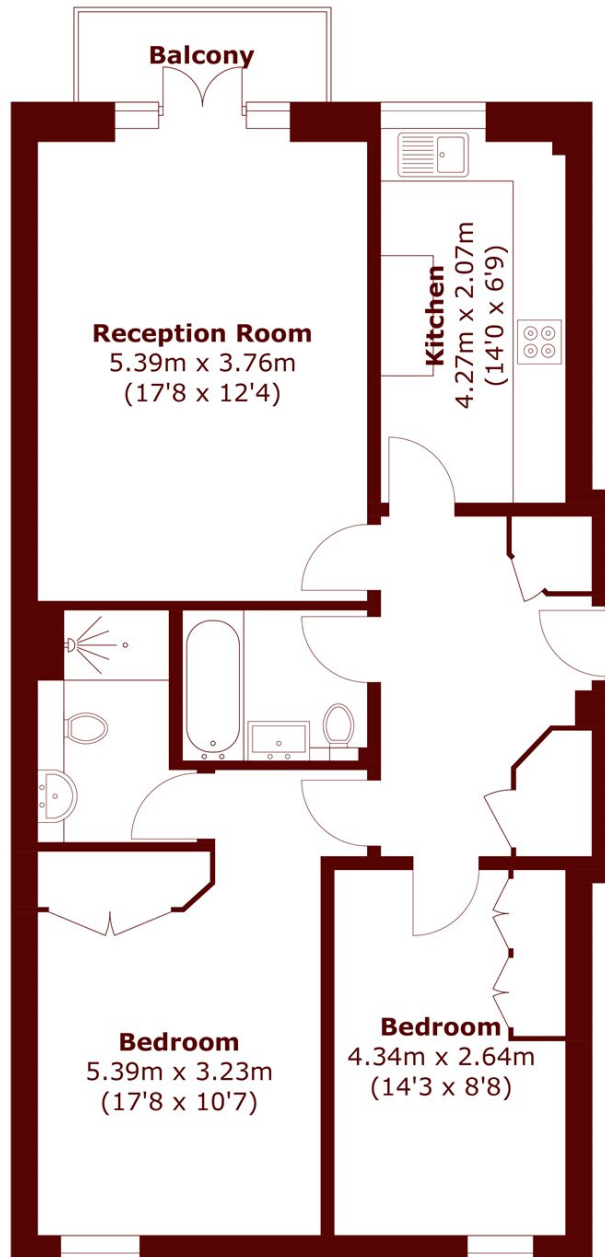
## ABOUT THE PROPERTY

This impressive apartment is situated on the raised ground floor and boasts a modern finish throughout. The flat benefits from a master bedroom with en suite bathroom and excellent storage space, a second double bedroom (again with storage) and a family bathroom. Furthermore, there is a large south-facing reception room with balcony and a modern separate kitchen, fully equipped and with lots of cupboard space. An off-street parking space is available by separate negotiation.



Fitzclarence House is ideally located for the shops bars and restaurants along Holland Park Avenue and Holland Park Central line station. Award-winning Holland Park is only a short stroll away providing a pleasant walk to High Street Kensington.





Total area (approx.): 77.4 sq. m (833.1 sq. ft)  
Balcony area (approx.): 2.9 sq. m (31.2 sq. ft)

## Marsh & Parsons Holland Park

57 Norland Square, London,  
W11 4QJ  
020 7605 6890