



423213 Imperial Drive, Harrow, HA2 7DP  
£1,600



423213 Imperial Drive, Harrow, HA2 7DP

£1,600

Modern 2-Bedroom Furnished Apartment | Moments from Rayners Lane Station

Located in a professionally managed residential building in Rayners Lane, this spacious and modern 2-bedroom apartment comes fully furnished and ready to move into. Situated in North West London, it offers excellent transport links with Rayners Lane Underground Station just minutes away - providing direct access to Wembley Stadium, Hammersmith, and Central London.

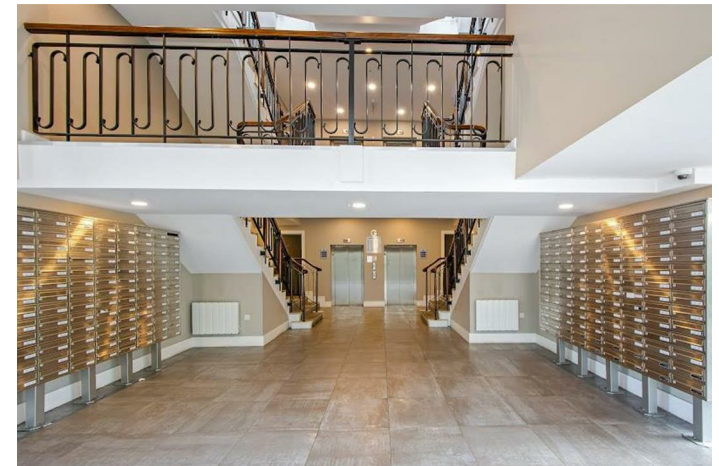
Residents benefit from a fantastic local lifestyle with a wide selection of shops, restaurants, and two major shopping centres nearby. Surrounded by green spaces, the area is also home to popular parks including Roxbourne Park and Northwick Park - perfect for outdoor leisure. Photos show a very similar apartment in this building however the exact layout/floor/view may vary.

Ideal for professionals or small families seeking convenience, comfort, and connectivity.

## Description



## Situation

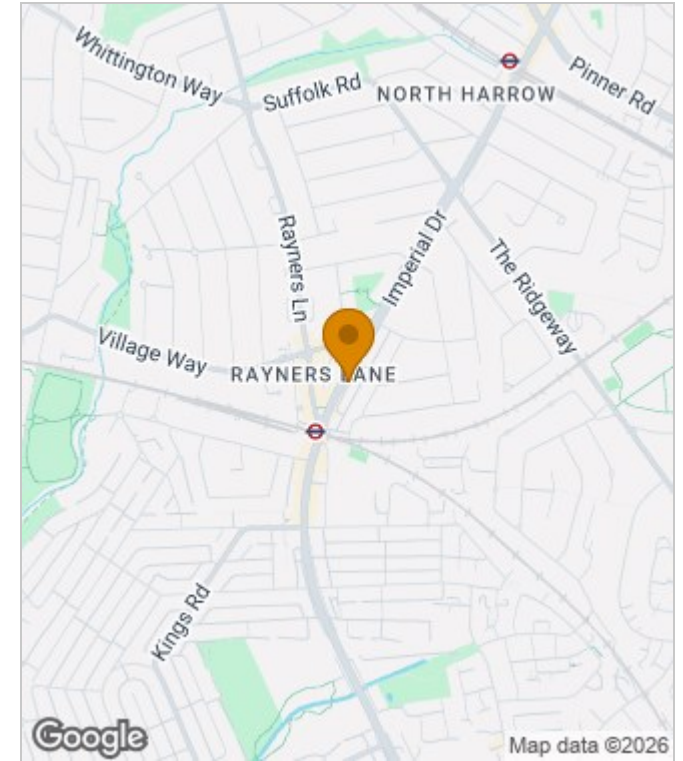


Furnished  
Council Tax Band: C  
Available:

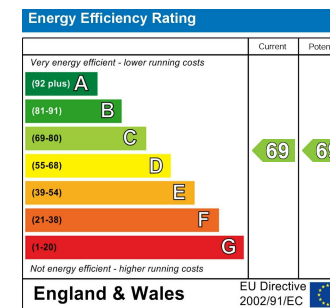
## Floor Plans



## Area Map



## Energy Performance Graph



These particulars, whilst believed to be accurate are set out as a general outline only for guidance and do not constitute any part of an offer or contract. Intending purchasers should not rely on them as statements of representation of fact, but must satisfy themselves by inspection or otherwise as to their accuracy. No person in this firm's employment has the authority to make or give any representation or warranty in respect of the property.