



**CARVERS**  
SALES & LETTINGS

Middleton Road  
Sadberge, Darlington, DL2 1RR  
Price £230,000

House - Terraced



APRIL INCENTIVE! RESERVE BEFORE 30th APRIL AND CARPETS WILL BE INCLUDED \*\* The Salisbury is a stunning 2.5 storey home, ideal for growing families and couples alike. A welcoming entrance hall leads to an open-plan kitchen/diner with a separate, bright lounge overlooking the rear garden. The first floor is home to two double bedrooms, a contemporary family bathroom and handy storage cupboard while the second floor boasts a stunning master bedroom, large en-suite and impressive dressing room area.

\*\*conditions apply



- APRIL INCENTIVE - CARPETS INCLUDED (conditions apply)
- Open plan family kitchen diner
- Downstairs WC
- Finished to a high specification throughout
- Bedroom one with en-suite & dressing area
- Lounge overlooking the rear garden
- Popular village location

#### The Development

Situated in the picturesque village of Sadberge with excellent commuter routes to Darlington and Durham, The Paddocks, offers an exclusive range of 25 three and four bedroom homes designed for every type of home buyer. Set in a vibrant village community there is a range of local amenities on your doorstep including an active village hall offering fitness classes, children's clubs, coffee shop and a post office. Socialising with friends and family is easy with two excellent pubs a stone throw from the development as well as a good range of sporting clubs and activities nearby. For children there is a choice of outstanding rated primary schools within a few minutes drive as well as an outstanding rated pre-school in the village itself.

Our homes are finished to a high specification throughout offering a range of integrated kitchen appliances, beautiful family bathrooms and en-suites and feature the latest smart tech perfect for the busy modern family.

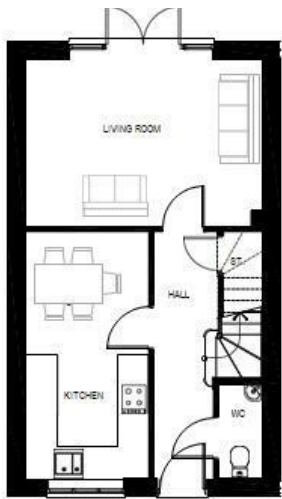
Please note there will be an annual fee to pay for the maintenance of communal green areas etc, amount to be confirmed.

Please note some images are CGI or of other properties and for illustration purposes only.

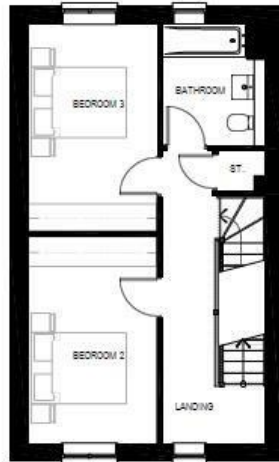
#### Buyers Identification Checks

Should a purchaser(s) have an offer accepted on a property marketed by Carver Residential they will need to undertake an identification check. This is done to meet our obligation under Anti Money Laundering Regulations (AML) and is a legal requirement. We use a specialist third party service to verify your identity, this is not a credit check and will have no effect on credit history. The cost of these checks is £36 inc. VAT per buyer, which is paid in advance, when an offer is agreed and prior to a sales memorandum being issued. This charge is non-refundable.





GROUND FLOOR



FIRST FLOOR



SECOND FLOOR

Property size taken from EPC  
1204.00 sq ft

## Room Dimensions

**Kitchen-diner**  
5.01m x 2.50m | 16'4" x 8'2"

**Lounge**  
4.79m x 3.40m | 15'9" x 11'2"

**Cloakroom**  
1.92m x 0.90m | 6'3" x 2'11"

**Bathroom**  
2.46m x 2.08m | 8'1" x 6'10"

**Bedroom Two**  
4.20m x 2.62m | 13'10" x 8'7"

**Bedroom Three**  
4.20m x 2.62m | 13'10" x 8'7"

**Bedroom One**  
3.70m x 3.85m | 12'1" x 12'8"



**Searching 1,000s of mortgages**  
Access to 12,000+ products from 90+ lenders across the UK.  
Call: 01325 370341 Visit: Any of our offices  
Web: [mortgageadvicebureau.com/carvers](http://mortgageadvicebureau.com/carvers)



Your home may be repossessed if you do not keep up repayments on your mortgage.  
There may be a fee for mortgage advice. The actual amount you pay will depend upon your circumstances.  
The fee is up to 1% but a typical fee is 0.3% of the amount borrowed.







These particulars do not constitute any part of an offer or contract. None of the statements contained in these particulars are to be relied on as statements or representations of fact and any intending purchaser must satisfy themselves by inspection or otherwise to the correctness of each of the statements contained in these particulars. The vendor does not make or give, and neither Carvers nor any person in their employment has any authority to make or give any representation or warranty whatever in relation to this property.