



29 Marsh Hall Talisman Way, Wembley, HA9 8JJ

A TRULY MAGNIFICENT THREE BEDROOM PROPERTY MEASURING IN EXCESS OF 1000sqft
 We are absolutely delighted to bring to the market one of the very best three bedroom flats we have ever seen. The property offers expansive living throughout and also benefits from a garage and beautiful communal gardens.

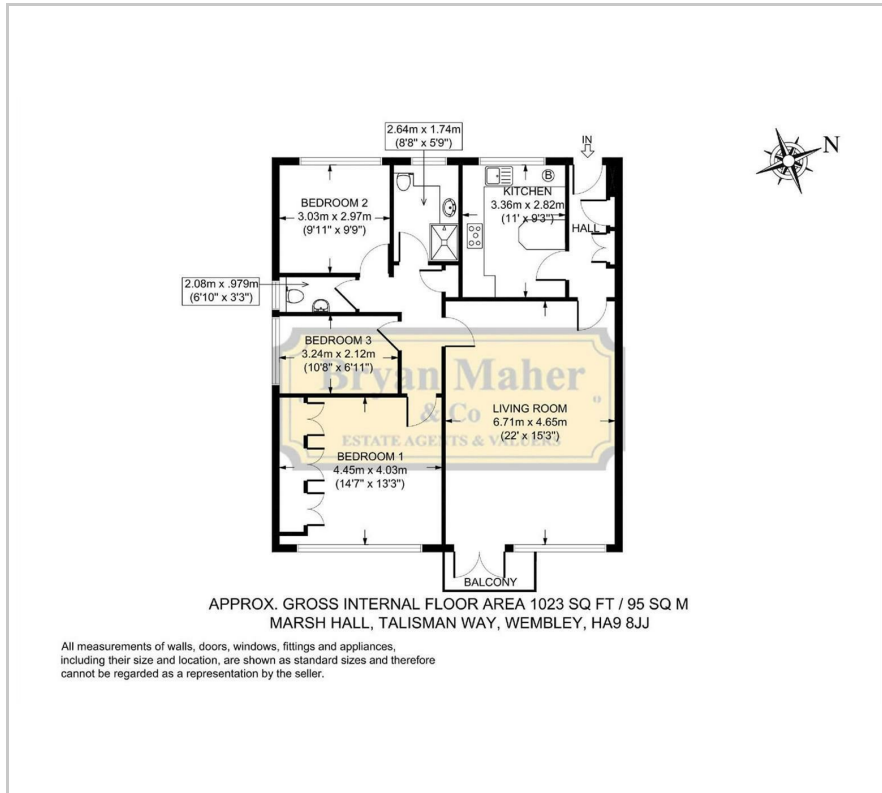
Internally this stunning property briefly comprises of a welcoming entrance hall with built in storage, a Modern fitted kitchen/breakfast room, a huge lounge with ample space for dining, three bedrooms, a modern shower room and a separate W/C.

Wembley Park is in the midst of a major regeneration programme at present, attracting investors & families from far & wide. The property is conveniently positioned within a short distance to excellent local Schools including the French International Lycee, Wembley Park Metropolitan & Jubilee line tube station and the new London Designer Outlet, offering an array of popular shops, restaurants & entertainment. Major road networks close by include the A406, the A40, the M1 & the A1.

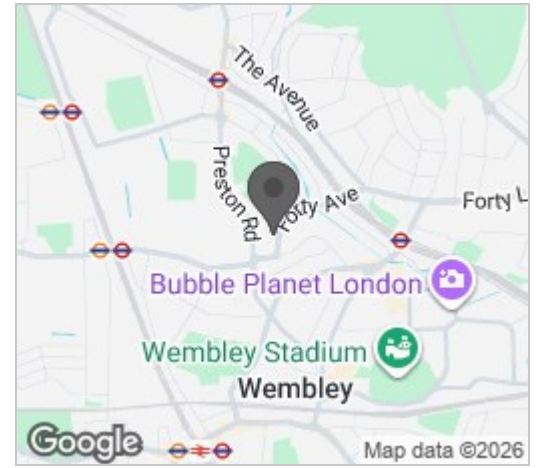
£459,950

- MAGNIFICENT THREE BEDROOM PROPERTY
- MEASURING IN EXCESS OF 1000sqft
- MODERN FITTED KITCHEN BREAKFAST ROOM
- HUGE LOUNGE WITH DINING AREA
- MODERN SHOWER ROOM & SEPARATE W/C
- GAS CENTRAL HEATING
- DOUBLE GLAZING AND BALCONY
- GARAGE & WONDERFUL COMMUNAL GARDENS
- CLOSE TO METROPOLITAN & JUBILEE LINE TUBES
- PRIME SOUGHT AFTER LOCATION

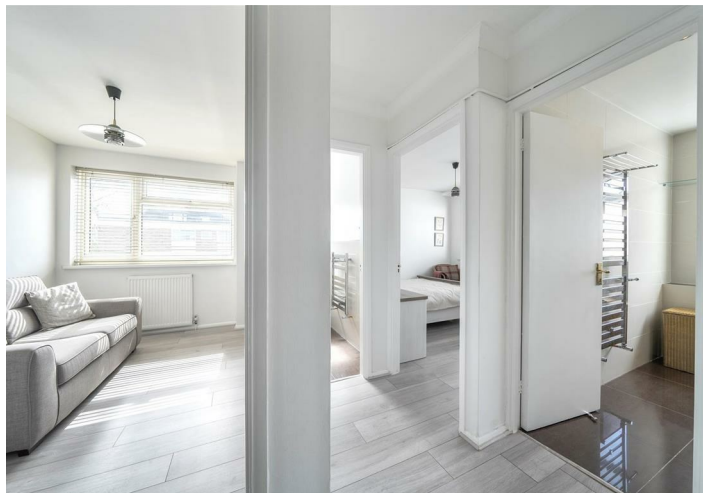
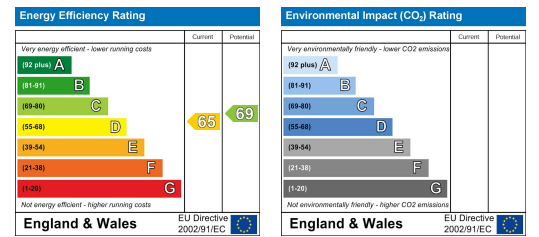
Floor Plan



Area Map



Energy Efficiency Graph



These particulars, whilst believed to be accurate are set out as a general outline only for guidance and do not constitute any part of an offer or contract. Intending purchasers should not rely on them as statements of representation of fact, but must satisfy themselves by inspection or otherwise as to their accuracy. No person in this firm's employment has the authority to make or give any representation or warranty in respect of the property.

