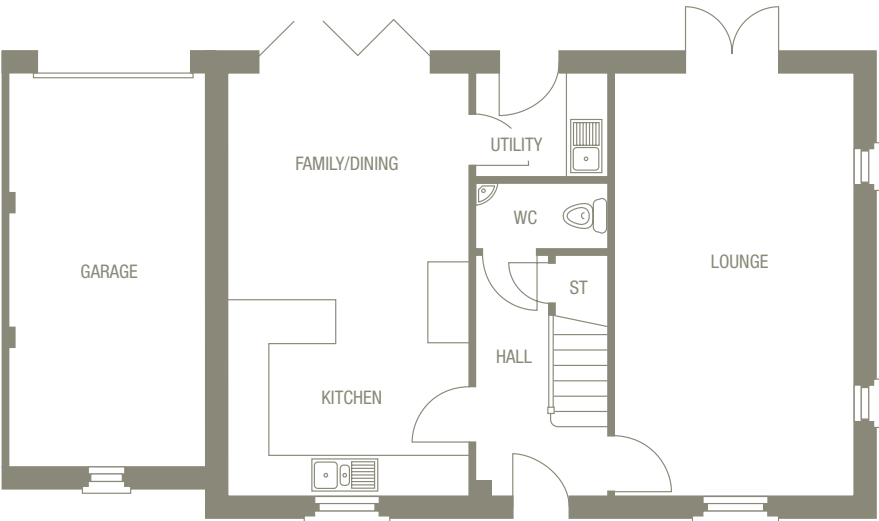


The Morestead

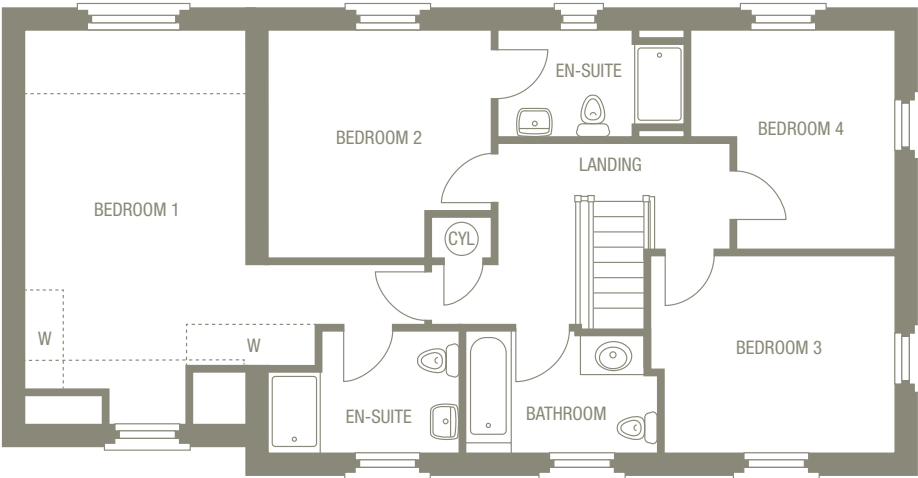
4 bedroom detached with single garage.



This impressive home has all the looks you desire and all the space you need, brought together to create the ultimate family home. On the ground floor, you'll find a spacious living room with French doors leading out onto the garden. On the other side of the hallway, discover an open plan kitchen/family/dining area with large bi-fold doors, also opening onto the garden. Upstairs showcases 4 generously sized bedrooms including the master bedroom with its own luxurious en-suite, and a beautiful family bathroom.



Ground Floor		
Room	Size	
Lounge	3620 x 6400mm	11'11" x 21'0"
Kichen/Family/Dining	3620 x 6400mm	11'11" x 21'0"
Utility	1950 x 1560mm	6'5" x 5'2"
WC/Cloaks	1950 x 1005mm	6'5" x 3'4"



First Floor		
Room	Size	
Bedroom 1	3350 x 5730*mm	11'0" x 18'10"*
En-suite	2890 x 1840*mm	9'6" x 6'0"*
Bedroom 2	3375* x 3470*mm	11'1"* x 11'5"*
En-suite 2	2845 x 1610mm	9'4" x 5'3"
Bedroom 3	3685 x 2990*mm	12'1" x 9'10"*
Bedroom 4	3100* x 3320*mm	10'2"* x 10'11"*
Bathroom	2950* x 1840*mm	9'8"* x 6'0"*

1,524 total sq ft

*Denotes maximum room dimensions.
This is a computer generated image of The Morestead, elevation treatment may vary. All internal images are indicative of a Morris house type. Room sizes are approximate. Plots may be handed and any garages may be single or double. Kitchen and bathroom layouts are indicative. These plans are correct at time of going to press, but may be subject to change during construction. Please ensure that you check for specific plot details.

