



6 Chapel Street

Pemberton, Wigan, WN5 8JP

£735 PCM



Sapphire Homes are pleased to offer To Let this wonderfully presented 2 bedroom mid terraced property in popular residential location that offers close proximity to the heart of Pemberton as well as being in a good location for local schools, amenities and transport links including the M6 and M58 as well as being a short walk to Pemberton Train Station. In brief the accommodation comprises of entrance / hallway, spacious lounge, reception 2 / dining room and to the rear elevation there is a modern fitted kitchen with access to the rear garden. To the first floor there is a landing with access to 2 good sized double bedrooms and bathroom with modern 3 piece suite in white with shower over bath. The property is warmed by Gas Central Heating and benefits from a modern tasteful décor throughout and Double Glazing throughout. To the front elevation the property is pavement fronted and to the rear there is a low maintenance garden and gated rear access. Would suit professional, couple or small family. No Smoking. Early internal viewing is highly recommended.



GROUND FLOOR

Entrance / Hallway

Lounge

Dining Room

Kitchen

FIRST FLOOR

Landing

Bedroom 1

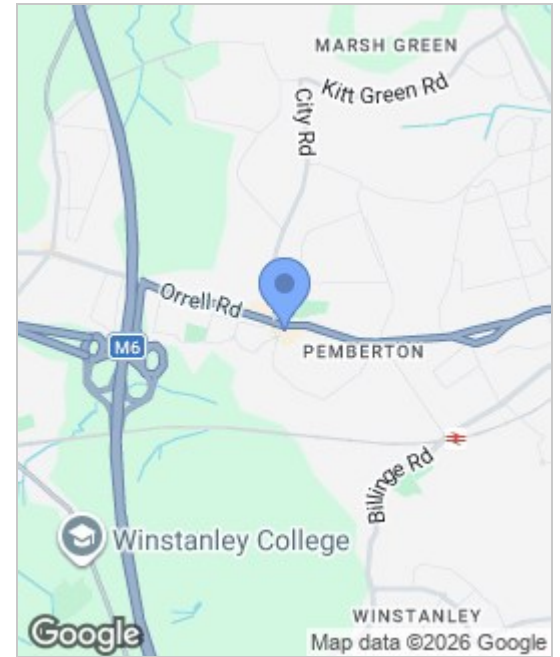
Bedroom 2

Bathroom

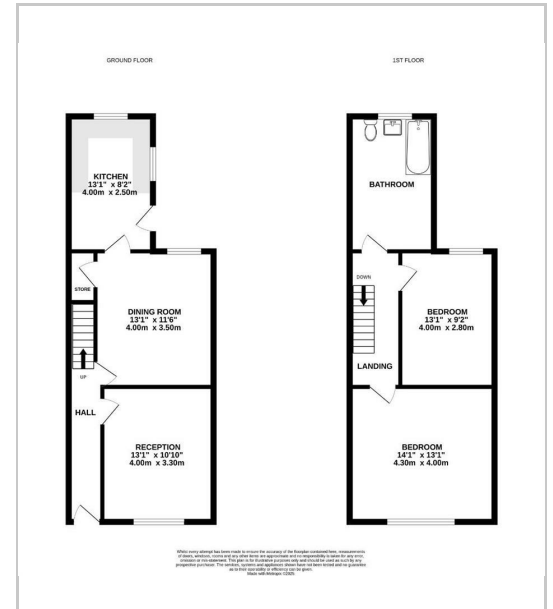
EXTERNAL

Rear Garden

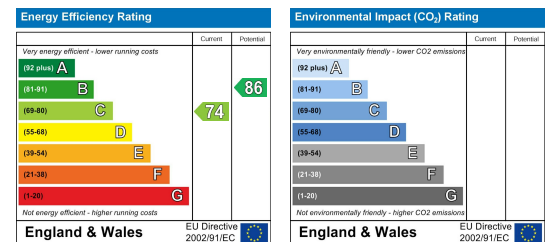
Area Map



Floor Plans



Energy Efficiency Graph



These particulars, whilst believed to be accurate are set out as a general outline only for guidance and do not constitute any part of an offer or contract. Intending purchasers should not rely on the representation of fact, but must satisfy themselves by inspection or otherwise as to their accuracy. No person in this firm's employment has the authority to make or give any representation or warranty in relation to the property.



Sapphire Homes (North) Ltd 80 Market Street, Wigan WNI 1HX
 T 01942 494944 E info@sapphirehomes.co.uk W www.sapphirehomes.co.uk VAT 183 759 366

specialists in sales, Lettings & Property Investments