



49, New Street, Shrewsbury, SY3 8JQ
£1,200 Per Month



49, New Street, Shrewsbury, SY3 8JQ

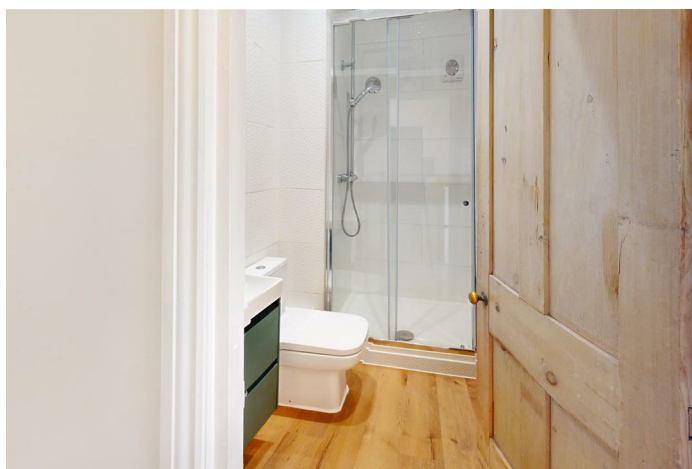
£1,200 Per Month

VIRTUAL TOUR AVAILABLE: Most attractive mid terraced house in a highly desirable residential location a stone's throw from Quarry Park and a short walk from Shrewsbury town centre. Includes allocated parking for one car.

Available: 11/07/2026

Description

Comprising: Living room including built in cupboards, ground floor double bedroom / further reception room, stairs down to lower level featuring a newly fitted kitchen including oven and electric hob and dining area with door to sun trap rear garden. Stairs to first floor landing, master bedroom including fitted wardrobe, further single bedroom / home office with fitted cupboards and views of the River Severn, newly fitted shower room. Gas central heating, double glazing. Allocated parking space for one car a short distance from the property. EPC C



Unfurnished

Council Tax Band: B

Available: 11th July 2026

EPC: C

Floor Plans



These particulars, whilst believed to be accurate are set out as a general outline only for guidance and do not constitute any part of an offer or contract. Intending purchasers should not rely on them as statements of representation of fact, but must satisfy themselves by inspection or otherwise as to their accuracy. No person in this firm's employment has the authority to make or give any representation or warranty in respect of the property.