

HUNTERS[®]

HERE TO GET *you* THERE

31 Stumperlowe Mansions Stumperlowe Lane, Fulwood, Sheffield, S10 3QQ

Asking Price £140,000

Property Images



HUNTERS[®]

HERE TO GET *you* THERE

Property Images



HUNTERS[®]

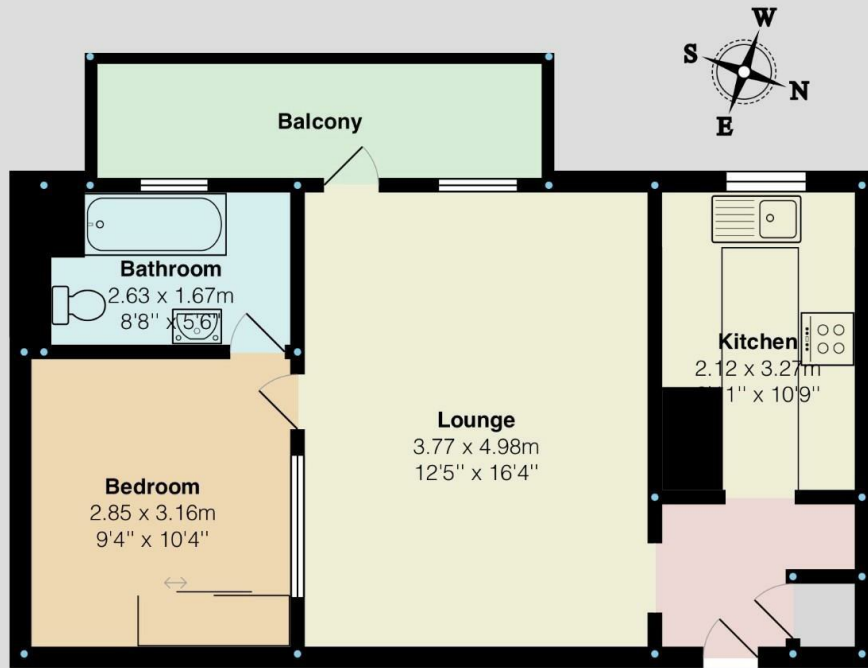
HERE TO GET *you* THERE

Property Images



HUNTERS®

HERE TO GET *you* THERE

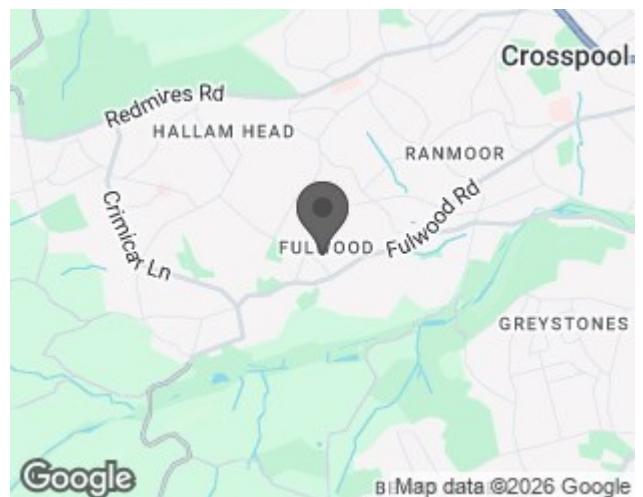


Total Area: 44.8 m² ... 482 ft² (excluding balcony)
All measurements are approximate and for display purposes only

EPC

Energy Efficiency Rating		Current	Potential
Very energy efficient - lower running costs			
(92 plus) A			
(81-91) B			
(69-80) C			
(55-68) D		60	
(39-54) E			
(21-38) F			
(1-20) G			
Not energy efficient - higher running costs			
England & Wales	EU Directive 2002/91/EC		

Map



Details

Type: Flat - Purpose Built Beds: 1 Bathrooms: 1 Receptions: 1 Tenure: Leasehold

Summary

A newly renovated and exceptional well presented top floor one bed roomed apartment which has a west floor balcony in this sought after development. This apartment at Stumperlowe Mansions comprises: Entry hallway, kitchen, lounge with balcony, bedroom with bathroom off . Viewing is highly recommended to appreciate the potential and size of accommodation.

Located within what is undoubtedly one of Sheffield's most highly regarded and sought after leafy suburbs being served by an excellent range of local amenities in Fulwood Village and Nether Green with beautiful walks through the Mayfield Valley. Regular nearby public transport convenient for access to Sheffield City Centre, universities and hospitals, the property is also within catchment for extremely sought after junior and secondary schools. It's easy to see why this area is so popular with professional persons and families alike.

Features

- No Chain
- Newly renovated with period features
- West facing balcony
- Spacious and Airy Accommodation
- Resident and visitors parking
- Sought after leafy suburb
- Fulwood sports club close by
- The facilities of Fulwood a short walk away