

Brixton Road | London, SW9



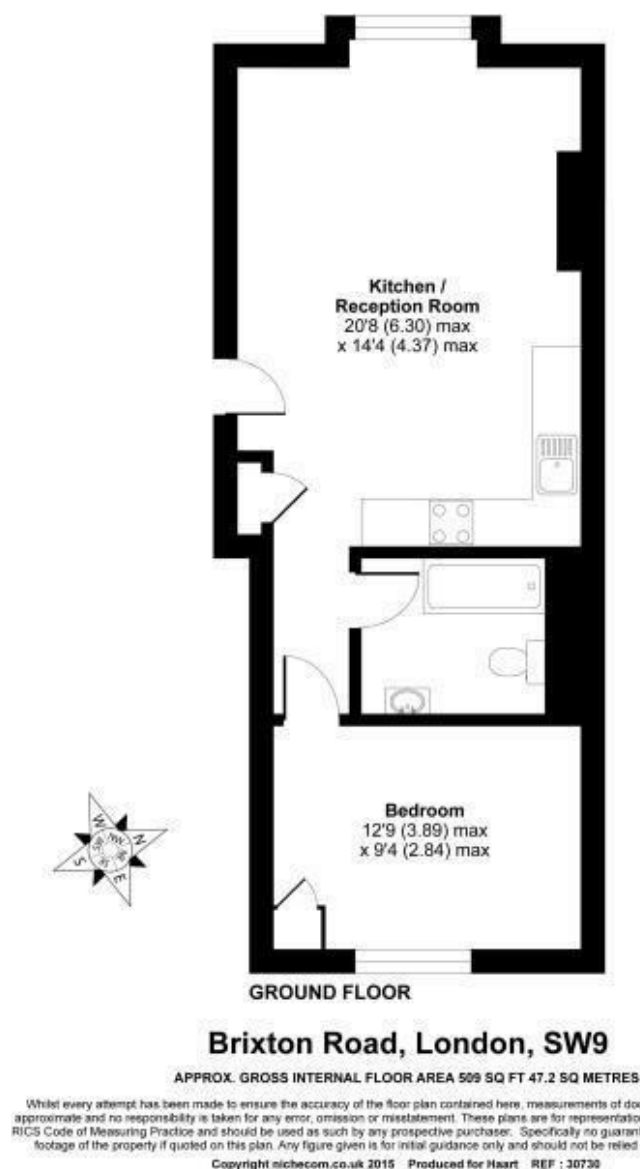
£1,849 Per Week

- One bedroom flat • Communal garden • Excellent location • Spacious • Leasehold covenants may apply • No parking (TBC)

Brixton Road | London, SW9



A beautiful one bedroom flat with a large communal garden right in the heart of Brixton. This spacious property, on the raised ground floor of a handsome Regency building, features an open plan kitchen/reception, modern bathroom and a double bedroom with fantastic storage at the back. It is located moments from Brixton tube, Brixton Academy, Pop Brixton and numerous amazing cafés & restaurants. Available immediately as part furnished. Deposit - £2,133 - Rent £1,850. Available from early February as part-furnished.



Energy Efficiency Rating		
	Current	Potential
Very energy efficient - lower running costs		
(92 plus) A		
(81-91) B		
(69-80) C		
(55-68) D	65	76
(39-54) E		
(21-38) F		
(1-20) G		
Not energy efficient - higher running costs		
England & Wales EU Directive 2002/91/EC		
Environmental Impact (CO ₂) Rating		
	Current	Potential
Very environmentally friendly - lower CO ₂ emissions		
(92 plus) A		
(81-91) B		
(69-80) C		
(55-68) D	71	85
(39-54) E		
(21-38) F		
(1-20) G		
Not environmentally friendly - higher CO ₂ emissions		
England & Wales EU Directive 2002/91/EC		

These particulars are designed to provide a guideline only and cannot be relied upon as a statement of fact. The description represents the opinion of the author and is not intended to provide false or misleading information. Any prospective purchaser should make further checks on its accuracy. All measurements are approximate and floorplans are for representation only.



Eden Harper
3 Arlington Parade, Brixton Hill, Brixton, SW2 1RH
0207 274 3111
brixsales@edenharper.com
www.edenharper.com