



Bond House, Goodwood Road, London, SE14 6FE



# Bond House, London SE14

Leasehold (241 years remaining)

A luminous residence with floor-to-ceiling windows and a west-facing balcony offering spectacular sunset views across the London skyline. Located in a contemporary development with communal gardens and secure bike storage and excellent transport links

## Key Features

- 1 Bedroom, 1 Bathroom
- West facing balcony with sunsets
- Excellent storage cupboards
- Council Tax: **C**
- Service Charge: **£1,600 P/A**
- Ground Rent: **£300 P/A**
- Communal grounds
- EPC: **B**

Positioned in the vibrant New Cross neighbourhood, 80 Bond House represents contemporary London living at its finest. This modern development offers residents the perfect balance of connectivity and community, with communal gardens providing a welcome retreat and secure bike storage catering to active city lifestyles.

This exceptional one-bedroom apartment is defined by an abundance of natural light, with floor-to-ceiling windows in every room creating a bright and airy atmosphere throughout. The west-facing balcony is a particular highlight, capturing golden afternoon sun and delivering breathtaking sunset views against London's iconic skyline. From your windows, marvel at sweeping vistas encompassing Tower Bridge, St Paul's Cathedral, The Shard, and the gleaming towers of Canary Wharf-a constantly evolving panorama that brings the capital's energy directly into your home.

Transport connections are superb, with New Cross and New Cross Gate stations providing Overground, Southern, and Thameslink services into London Bridge, Shoreditch, and beyond



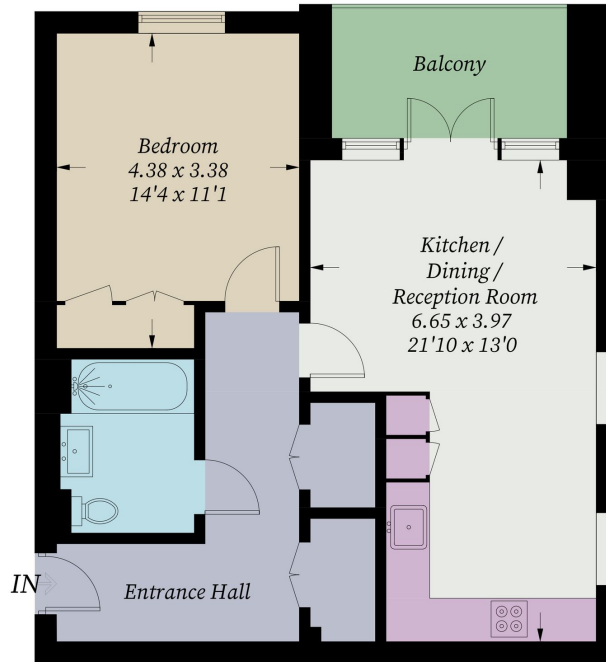






# Bond House, SE14

Approximate Gross Internal Area = 55.6 sq m / 599 sq ft



## Sixth Floor

Illustration for identification purposes only, measurements are approximate, not to scale. Fourlabs.co © (ID1306859)