

## Albion Terrace, E8

£5,950 Per calendar month

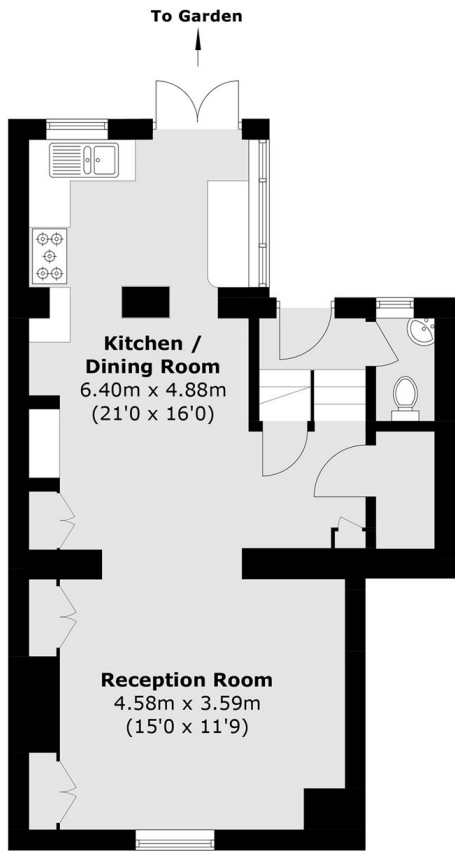
A four double bedroom Victorian three storey house with a generous garden in one of Hackneys most desirable locations. This property has maintained many of its period features and suitable for professionals shares or a family.

The house is located on a private square under 300 yards from Haggerston overground station. The popular Broadway Market and London Fields are both within half a mile walk too.

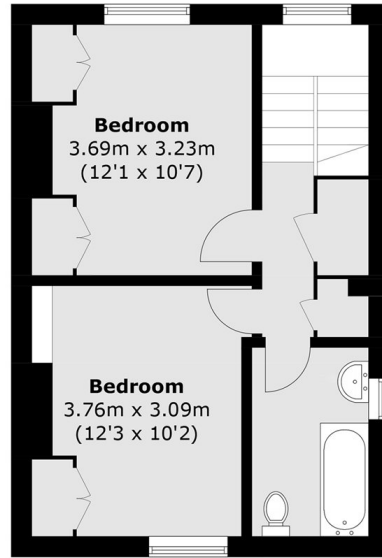
### Features

- Four Double Bedroom
- Open Plan
- Original Features
- Split Over Three Floors
- Private Garden
- Sachs Windows

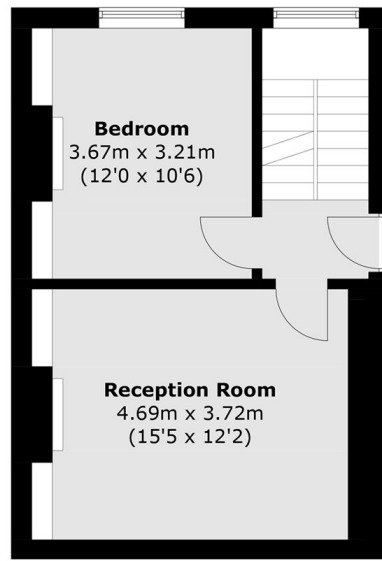
# Albion Terrace, London, E8



**Lower Ground Floor**



**First Floor**



**Ground Floor**

Total area (approx.) : 124.7 sq. m (1342 sq. ft)