



**Connells**

Coniston Drive  
Aylesham Canterbury



# Coniston Drive Aylesham Canterbury CT3 3HZ

for sale guide price  
**£230,000**



## Property Description

This beautifully presented two bedroom bungalow in the sought-after Aylesham village is a rare gem.

Set in the newer part of the village, built in the 1980s, this corner plot home is attached to just one other property, offering privacy and a spacious feel.

The driveway provides off-road parking, making it easy to park and unload your shopping with no hassle. The conservatory is a standout feature, ideal for relaxing on sunny days or enjoying cozy winter afternoons. The low-maintenance garden adds to the appeal, making it perfect for anyone who appreciates easy care, whether you're a retiree or simply looking for a hassle-free outdoor space.

Inside, the living room is impressively spacious, offering more room than you'd typically expect from a bungalow in this price range. This home also has two double bedrooms, a handy entrance porch and family bathroom. With just a little personal touch, this area can be transformed into the perfect home retreat.

Aylesham village boasts a convenient parade of shops, and with excellent bus links to Canterbury and a nearby train station, commuting is a breeze.

Whether you're a first-time buyer, investor, or retiree looking for a move-in ready, low-maintenance home with no onward chain, this property is sure to tick all the boxes. Don't miss the opportunity-arrange a viewing today!

## Living Room

17' x 10' 7" ( 5.18m x 3.23m )

## Kitchen

11' 2" x 6' 4" ( 3.40m x 1.93m )

## Bathroom

7' x 6' 2" ( 2.13m x 1.88m )

## Bedroom One

13' 6" x 9' 10" ( 4.11m x 3.00m )

## Bedroom Two

9' 2" x 7' 2" ( 2.79m x 2.18m )

## Conservatory

9' x 6' 5" ( 2.74m x 1.96m )



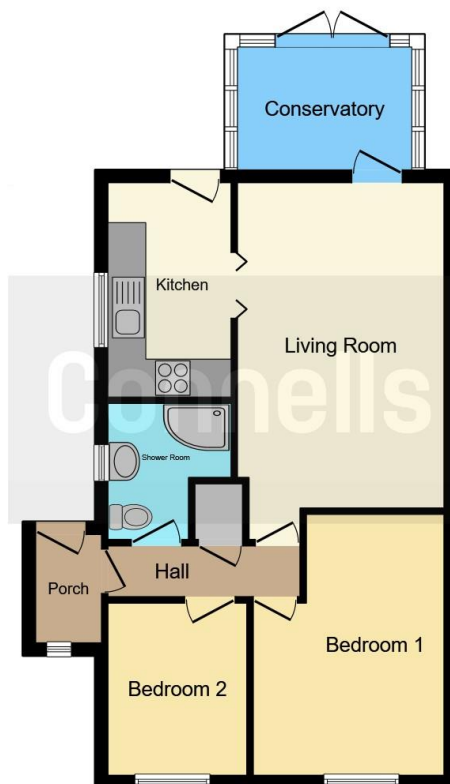












This floor plan is for illustrative purposes only. It is not drawn to scale. Any measurements, floor areas (including any total floor area), openings and orientation are approximate. No details are guaranteed, they cannot be relied upon for any purpose and they do not form part of any agreement. No liability is taken for any error, omission or misstatement. A party must rely upon its own inspection(s). Powered by [www.focalagent.com](http://www.focalagent.com)

To view this property please contact Connells on

**T 01227 764 720**  
**E [canterbury@connells.co.uk](mailto:canterbury@connells.co.uk)**

29-30 Watling Street  
 CANTERBURY CT1 2UD

EPC Rating: D Council Tax  
 Band: B

Tenure: Freehold

**view this property online [connells.co.uk/Property/CBY406613](http://connells.co.uk/Property/CBY406613)**



1. MONEY LAUNDERING REGULATIONS Intending purchasers will be asked to produce identification documentation at a later stage and we would ask for your co-operation in order that there will be no delay in agreeing the sale. 2. These particulars do not constitute part or all of an offer or contract. 3. The measurements indicated are supplied for guidance only and as such must be considered incorrect. Potential buyers are advised to recheck measurements before committing to any expense. 4. We have not tested any apparatus, equipment, fixtures, fittings or services and it is in the buyers interest to check the working condition of any appliances.

Connells Residential is registered in England and Wales under company number 1489613, Registered Office is Cumbria House, 16-20 Hockliffe Street, Leighton Buzzard, Bedfordshire, LU7 1GN. VAT Registration Number is 500 2481 05.

**See all our properties at [www.connells.co.uk](http://www.connells.co.uk) | [www.rightmove.co.uk](http://www.rightmove.co.uk) | [www.zoopla.co.uk](http://www.zoopla.co.uk)**

Property Ref: CBY406613 - 0004