



## 32 Sherbourne Road, Witney

Guide Price £550,000



## 32 Sherbourne Road

A beautifully presented and thoughtfully extended four-bedroom detached home, ideally situated within the sought-after Deer Park development.

Council Tax band: E

Tenure: Freehold

- A beautifully presented and extended four-bedroom detached home located on the popular Deer Park development.
- Fitted kitchen with Quartz worktop, island and adjoining utility room and WC.
- Sitting room with feature fireplace.
- Garage with EV charger and off-street parking for three cars.
- Four well-proportioned bedrooms, master bedroom with ensuite and built-in wardrobe.
- Warm roof conservatory with doors leading out to the low maintenance garden with extended patio area.





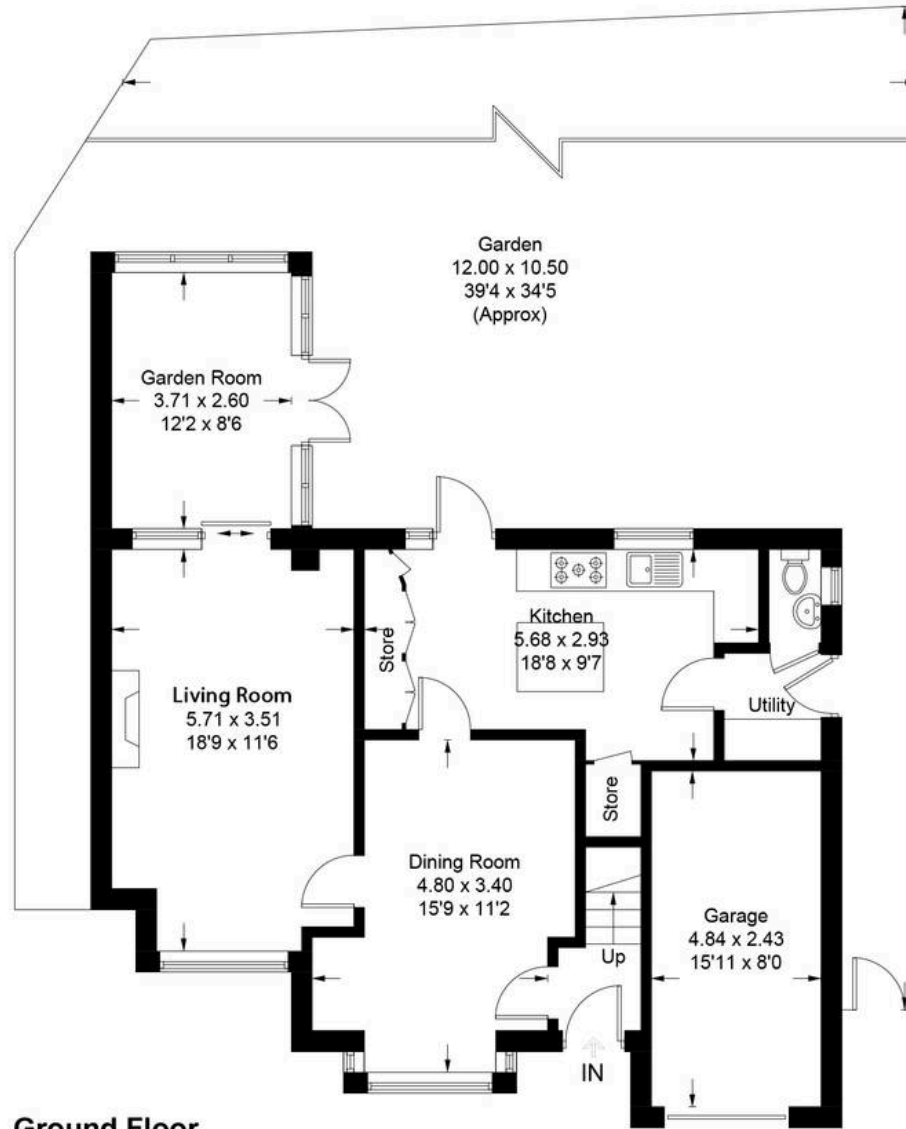
# Sherbourne Road - Witney

Approximate Gross Internal Area = 134.6 sq m / 1449 sq ft

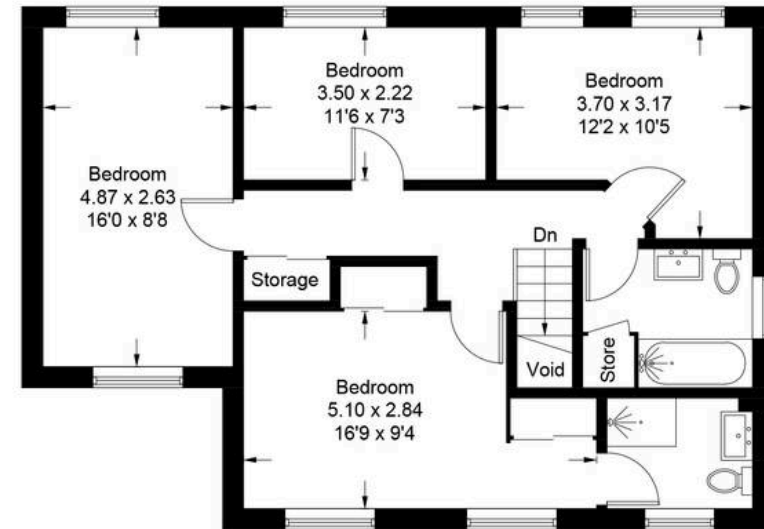
Garage = 11.9 sq m / 128 sq ft

Total = 146.5 sq m / 1577 sq ft

(Including Void)



Ground Floor



First Floor

Illustration for identification purposes only, measurements are approximate,  
not to scale. Fourlabs.co © (ID1297553)



## Simpsons Witney Branch

4 Langdale Court Witney, Oxfordshire - OX28 6AD

01993 835030 • [witney@simpsonsproperty.com](mailto:witney@simpsonsproperty.com) • [www.simpsonsproperty.com/](http://www.simpsonsproperty.com/)