



**32 Limestone Way, Bleadon**

Weston-Super-Mare

**£499,995**



## 32 Limestone Way

Bleadon, Weston-Super-Mare

Plot 26 The Dartford a four-bedroom detached homes with high-end finishes, en suite, solar panels, EV charging, NHBC warranty, and flexible buying options.

Council Tax band: TBD

Tenure: Freehold

- Plot 26 - The Dartford - Eden's Green Development
- Brand new development, Eden's Green, Edenstone Homes
- NHBC warranty
- Underfloor heating & EV charging point
- Part Exchange/Assisted move available
- Bay to the lounge and principal bedroom.
- Kitchen diner with bi fold doors opening onto the rear garden
- En Suite to principal bedroom
- 4 bedrooms
- Chain free
- Overlooking Orchard and open space & within a cul - de - sac
- Single garage with double driveway





### **Kitchen**

Spacious modern kitchen with built in appliances and breakfast bar. Located on the ground floor towards the rear of the property with direct access to the utility room

### **Dining Room**

Located on the ground floor towards the front of the property with bifold doors opening up into the rear garden.

### **Lounge**

Located on the ground floor the space is an excellent hosting room with a feature bay window to allow additional lighting.

### **Principal Bedroom**

Double bedroom located on the first floor towards the rear of the property, the space has direct access to an en suite.

### **En Suite**

Direct access from the Principal Bedroom.

### **Bedroom 2**

Double bedroom located on the first floor towards the rear of the property.

### **Bedroom 3**

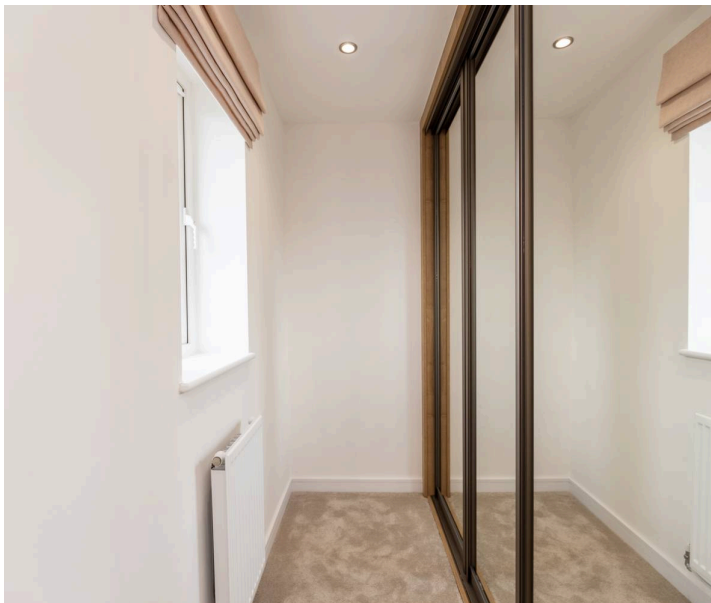
Bedroom located on the first floor

### **Bedroom 4**

Ideal children's bedroom or home office

### **Bathroom**

Located on the first floor with direct access from the landing





EDEN'S GREEN  
BLEADON

# VIEW HOME OPEN WEEKEND

16/17 May 2026

## REAR GARDEN

The rear garden is located through the dining room bifold doors.

## GARAGE

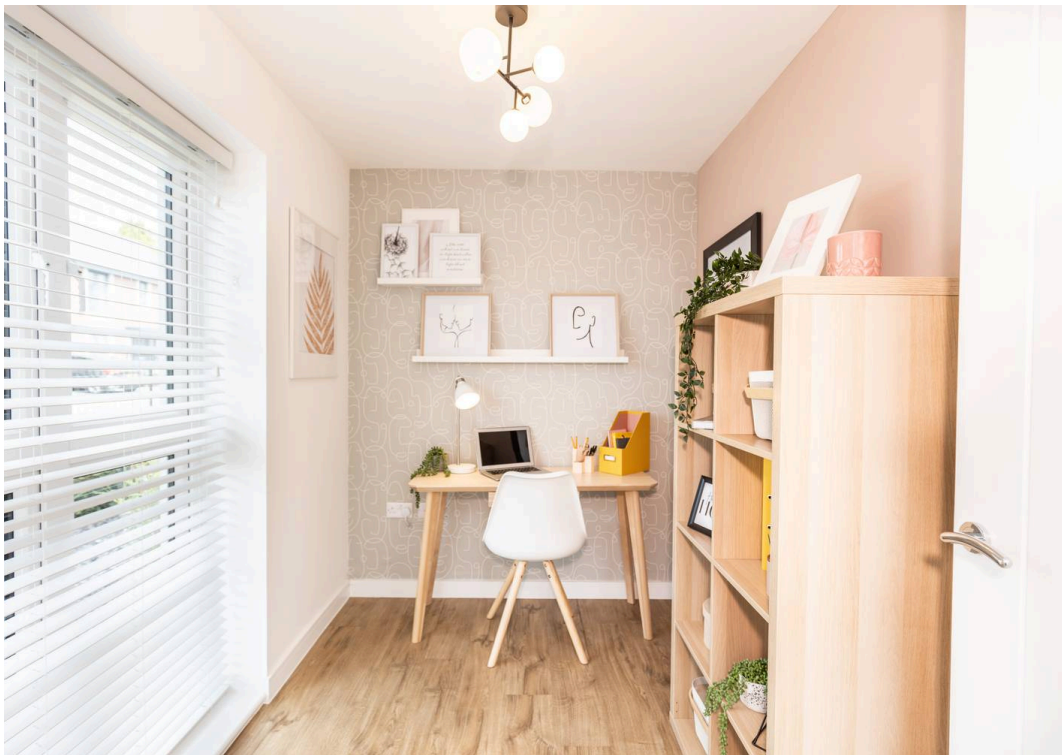
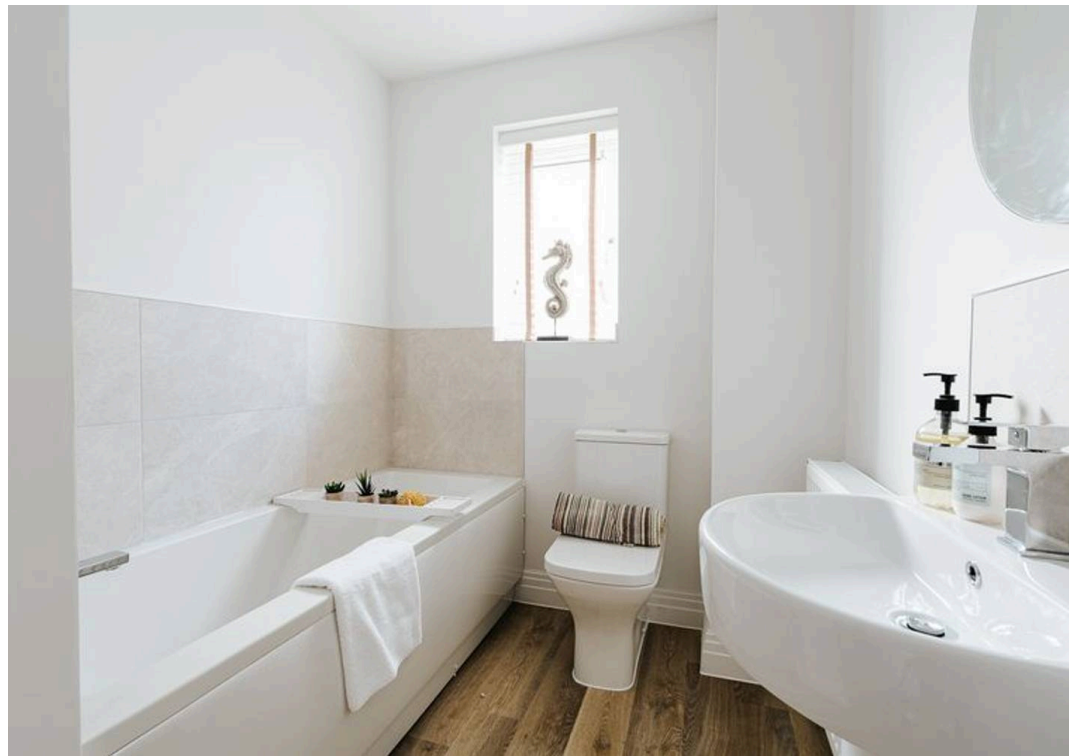
Single Garage

Single garage located at the end of a driveway

## DRIVEWAY

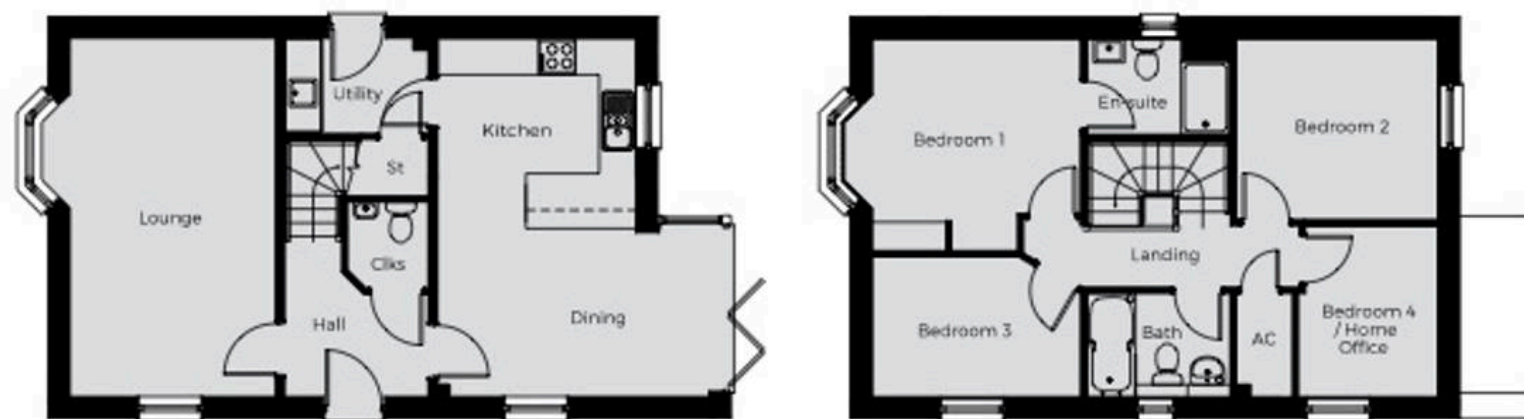
2 Parking Spaces

2 Spaces



# The Dartford

A THREE / FOUR BEDROOM DETACHED HOME WITH GARAGE



## GROUND FLOOR

Kitchen	3.25m x 2.81m 10'8" x 9'3"
Dining	4.45m x 3.05m 14'7" x 10'0"
Lounge	5.86m x 3.83m 19'3" x 12'7"

## FIRST FLOOR

Bedroom 1	3.47m x 3.42m 11'5" x 11'3"
Bedroom 2	3.31m x 2.96m 10'10" x 9'9"
Bedroom 3	3.41m x 2.29m 11'2" x 7'6"
Bedroom 4/ Home Office	2.80m x 2.29m 9'2" x 7'6"



# Site Plan

- 4 bedroom
  - Kingsholm
  - Monmouth
  - Tintern
  - Dartford
- 3 bedroom
  - Chepstow
  - Affordable housing
- Bat house
- Play area
- Community orchard



Housen Estates is proud to partner with **Custom Insurance & Mortgage Solutions** to offer expert mortgage and insurance advice tailored to your property journey. Whether you're buying your first home, moving up the ladder, or expanding your portfolio, our trusted partners provide personalised support, access to a wide panel of lenders, and guidance every step of the way. Together, we make securing your dream home simple, smart, and stress-free.

Scan the QR code or visit [www.custominsurancemortgagesolutions.co.uk](http://www.custominsurancemortgagesolutions.co.uk) and click on 'Start Your Journey' at the top of any page.