

Price
£230,000

Freehold

2x  1x  1x 

**Saxton Street,
Gillingham, Kent, ME7**

OVER 60?

Secure this property
for up to **59% less!**

Wards
Helping you move forwards



Main features

- Popular layout with double bedrooms and upstairs bathroom
- Gas central heating and double glazing
- Chain free
- Well presented making an ideal first time buy
- Within walking distance of Gillingham High Street

Accommodation

GROUND FLOOR

Porch

Lounge: 14'3 x 11'4 (4.35m x 3.46m)

Dining Area: 14'3 x 10'9 (4.35m x 3.28m)

Kitchen: 11'0 x 7'9 (3.36m x 2.36m)

Study/Utility Room: 10'7 x 5'5 (3.23m x 1.65m)

FIRST FLOOR

Landing

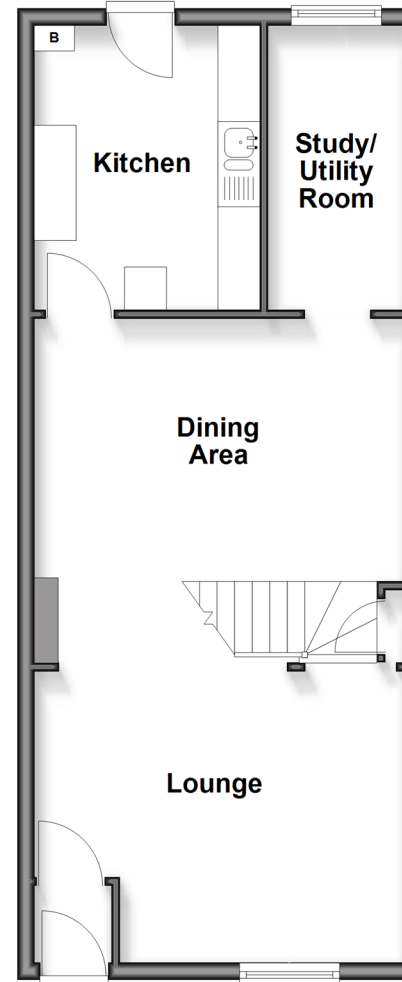
Bedroom 1: 14'3 x 11'4 (4.35m x 3.46m)

Bedroom 2: 11'11 x 10'9 (3.63m x 3.28m)

Bathroom

Ground Floor

Approx. 48.6 sq. metres (522.8 sq. feet)



First Floor

Approx. 42.6 sq. metres (459.0 sq. feet)



Call Gillingham - 01634 851191 ■ wardsofkent.co.uk

- Legal advice should be taken to verify fixtures/fittings, planning, alterations and/or lease details
- Appliances & services are untested, dimensions are approximate and floor plans are not to scale
- Through a Homewise Home For Life Plan people aged 60+ can secure this property for up to 50% less, by purchasing a Lifetime Lease.



10925139/20250826/ML/GS