

Estate Agents



Auctioneers



**Palmerston Road, Boscombe, Dorset, BH1 4HP**  
**Guide Price £250,000 - £260,000 – Freehold**

Former HMO 5 Bedroom Semi Detached House | Hallway | Breakfast Room | Kitchen  
Ground Floor Shower Room | Two Ground Floor Reception Room/Bedrooms | Landing  
Three Double Bedrooms | Bathroom | Courtyard Style Garden | No Chain

# Palmerston Road, Boscombe, Bournemouth, BH1 4HP

## Guide Price £250,000 - £260,000 - Freehold

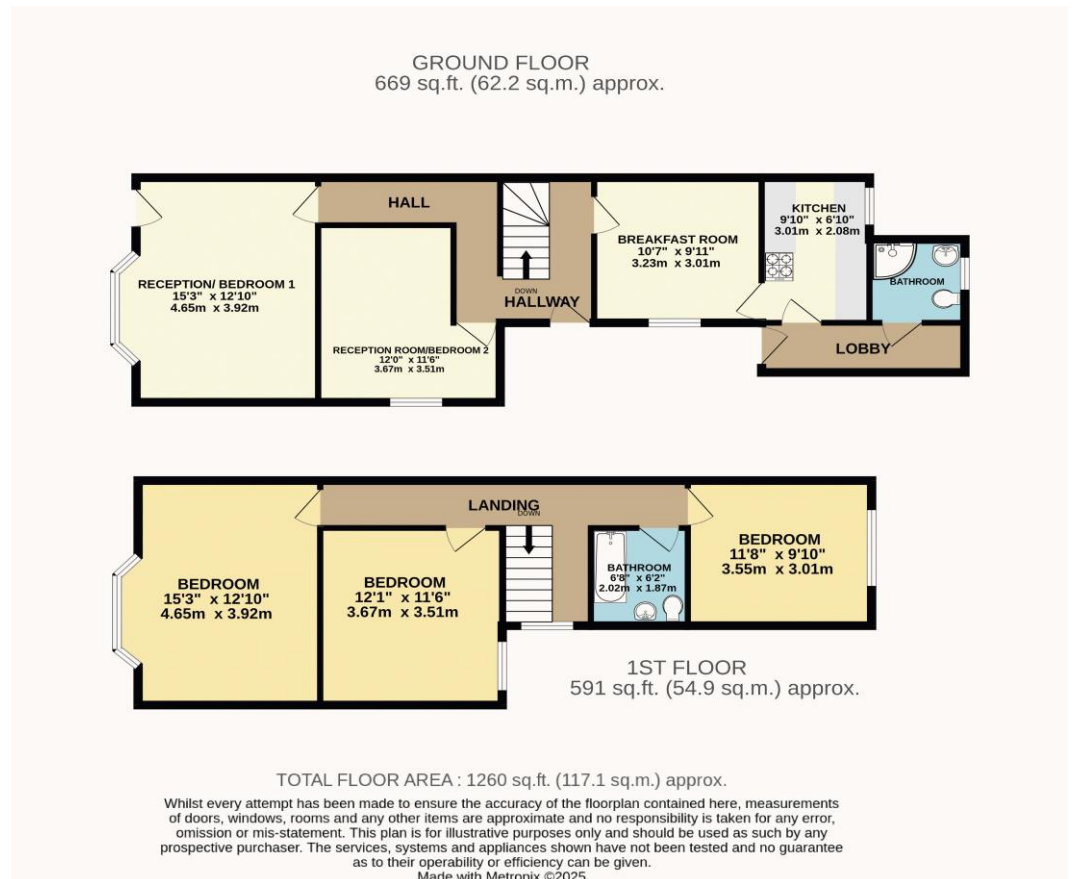
This is a great opportunity to acquire a Semi-Detached Period Property that was previously used as a 5-bedroom house of multiple occupations (HMO). The property is ideally located just a short walk from the shopping parade in Boscombe, which offers a variety of shops and eateries, and is close to transport links into Bournemouth.

**This property has great potential to be repurposed back into a lucrative HMO or transformed into a spacious family home.**

The ground floor boasts two versatile reception rooms currently used as bedrooms, complemented by a breakfast room, a separate kitchen, and a convenient ground-floor shower room.

The upper level offers three additional double bedrooms along with a family bathroom. While the property does require some refurbishment throughout, it presents an excellent investment opportunity or a fantastic first step onto the property ladder. Outside, you'll find a charming courtyard-style garden.

Tenure: Freehold  
Council Tax Banding: C  
EPC Rating: 69 | C



Energy Efficiency Rating		Current	Potential
Very energy efficient - lower running costs			
(92+)	A		
(81-91)	B		84
(69-80)	C	69	
(55-68)	D		
(39-54)	E		
(21-38)	F		
(1-20)	G		
Not energy efficient - higher running costs			
England & Wales		EU Directive 2002/91/EC	
WWW.EPC4U.COM			

See all our properties at  
 OnTheMarket.com

These particulars, whilst believed to be accurate are set out as a general outline only for guidance and do not constitute any part of an offer or contract. Intending purchasers should not rely on them as statements of representation of fact, but must satisfy themselves by inspection or otherwise as to their accuracy. We have not carried out a detailed survey nor tested the services, appliances and specific fittings. Room sizes should not be relied upon for carpets and furnishings. The measurements given are approximate. No person in this firm's employment has the authority to make or give any representation or warranty in respect of the property.