



Coppetts Road, N10

£400,000

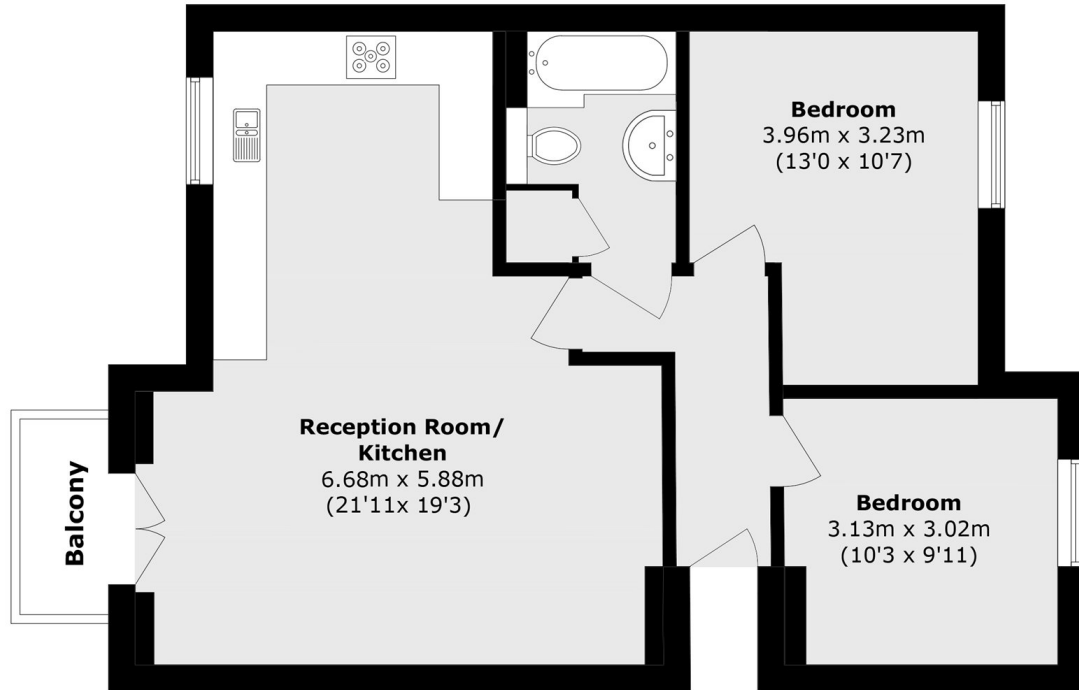
Situated on the top floor of this modern build development is a spacious two bedroom apartment available on a chain free basis. Comprising a large open plan kitchen/living area, as well as two double bedrooms, a bathroom and a large loft space, this home is ideal for first time buyers or buy to let investors.

Gilson Place is situated within easy reach of shops and amenities in Muswell Hill with excellent green spaces including Alexandra Park close by. The development is within catchment areas for outstanding schools

Features

- Two Bedrooms
- Top Floor
- Allocated Parking
- Modern Development
- Balcony
- Double Glazing

Coppetts Road, London, N10



Total area (approx.): 64.1 sq. m (689.9 sq. ft)

Balcony area (approx.): 2.1 sq. m (22.6 sq. ft)