



## North Lane, Canterbury CT2 7EB

**£1,150 Per Calendar Month**

Located in the heart of historic Canterbury, available to rent is this recently refurbished two bedroom cottage on North Lane with a share of a small courtyard garden. Properties in the area are rarely available for long and as such an early call is strongly advised to avoid disappointment!

### Measurements:

Lounge 11'8 x 11'5

Dining Room 11'7 x 11'4

Kitchen 11'1 x 6'7

Shower Room 6'2 x 6'1

Bedroom 13'9 x 11'8

Bedroom 11'5 x 12'6

CR Real Estate are part The Ombudsman Redress Scheme and are a member of the Propertymark Client Money Protection Scheme. Tenant deposits are protected by the Tenancy Deposit Scheme. For more information, please contact us.

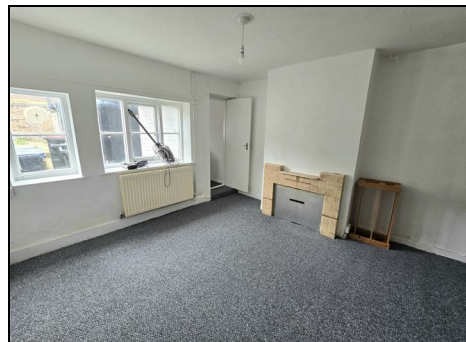
Client Money Protection is provided by: Client Money Protect. Scheme Ref: CMP004209

Independent redress is provided by: The Property Ombudsman (TPO). Membership Number: E01687



Energy Efficiency Rating		
	Current	Potential
Very energy efficient - lower running costs		
(92 plus) <b>A</b>		
(81-91) <b>B</b>		
(69-80) <b>C</b>		
(55-68) <b>D</b>		
(39-54) <b>E</b>		
(21-38) <b>F</b>		
(1-20) <b>G</b>		
Not energy efficient - higher running costs		
<b>England &amp; Wales</b>	EU Directive 2002/91/EC	

Environmental Impact (CO <sub>2</sub> ) Rating		
	Current	Potential
Very environmentally friendly - lower CO <sub>2</sub> emissions		
(92 plus) <b>A</b>		
(81-91) <b>B</b>		
(69-80) <b>C</b>		
(55-68) <b>D</b>		
(39-54) <b>E</b>		
(21-38) <b>F</b>		
(1-20) <b>G</b>		
Not environmentally friendly - higher CO <sub>2</sub> emissions		
<b>England &amp; Wales</b>	EU Directive 2002/91/EC	



**ESTATE AGENCY : REDEFINED**

