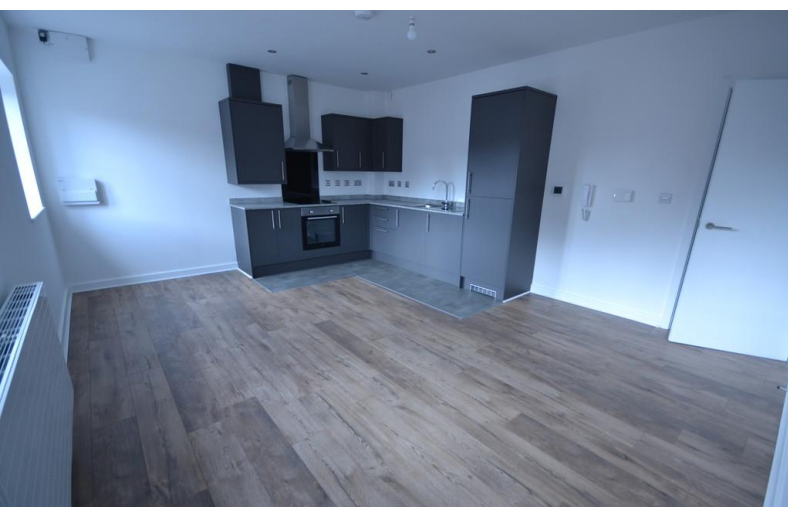


TO LET



Edward Street, Fenton

1 Bedroom, 1 Bathroom, Apartment

£675 pcm



Edward Street, Fenton

Apartment,
1 bedroom, 1 bathroom

£675 pcm

Date available: 9th May 2026

Deposit: £778

Unfurnished

Council Tax band: A

- Purpose built flat
- Open plan lounge and kitchen
- Double bedroom
- Bathroom
- Communal rear garden
- Close to Hanley town centre
- Walking distance to local shops

STUNNING PURPOSE BUILT FIRST FLOOR FLAT. Martin and co offer for rent this stunning 1 bedroom first floor purpose built flat located in a popular area within walking distance from local shops and a short drive from Hanley town centre. The property which benefit from a shared rear garden with bike shed comprises and large open plan lounge and kitchen, double bedroom and bathroom and has the benefit of shared rear garden with bike shed.

Score	Energy rating	Current	Potential
92+	A		
81-91	B	83 B	83 B
69-80	C		
55-68	D		
39-54	E		
21-38	F		
1-20	G		



Martin & Co Stoke on Trent

12 Albion Street • Stoke-On-Trent • ST1 1QH

T: 01782 262880 • E: stokeontrent@martinco.com <http://www.martinco.com>

01782 262880



Accuracy: References to the Tenure of a Property are based on information supplied by the Seller. The Agent has not had sight of the title documents. A Buyer is advised to obtain verification from their Solicitor. Items shown in photographs including but not limited to carpets, fixtures and fittings are not included unless specifically mentioned within the sales particulars. They may however be available by separate negotiation. Buyers must check the availability of any property and make an appointment to view before embarking on any journey to see a property. No person in the employment of the agent has any authority to make any representation about the property, and accordingly any information given is entirely without responsibility on the part of the agents, sellers(s) or lessors(s). Any property particulars are not an offer or contract, nor for part of one. **Sonic / laser Tape:** Measurements taken using a sonic / laser tape measure may be subject to a small margin of error. **All Measurements:** All Measurements are Approximate. **Services Not tested:** The Agent has not tested any apparatus, equipment, fixtures and fittings or services and so cannot verify that they are in working order or fit for the purpose. A Buyer is advised to obtain verification from their Solicitor or Surveyor.