



Connells

Quay Road
Newton Abbot



Property Description

Upon entering, you are welcomed into a bright and inviting living space perfect for both relaxed evenings and stylish entertaining. The proportions create a natural sense of flow, with ample room for modern furnishings while retaining a cosy ambience.

To the rear, the kitchen forms the heart of the home. Well-designed and functional, it offers generous workspace with a handy utility area and direct access to the garden. The ground floor bathroom is neatly arranged and conveniently positioned.

Upstairs, the property continues to impress with three bedrooms. The principal bedroom is generously sized, complemented by a further comfortable double bedroom and a versatile third bedroom - perfect as a nursery, dressing room or refined home office.

Situated on Quay Road, the property is within easy reach of Newton Abbot town centre, local shops, supermarkets and cafes. Newton abbot railway station provides direct links to Exeter, Plymouth and London, while the A380 offers straightforward access to Torbay and the M5 - ideal for commuters.

Front Of The Property

Two off-street parking spaces for two vehicles. A shared pathway to the front leads to the main entrance of the property.

Entrance Porch

uPVC door into the porch which leads into the lounge.

Lounge

16' 7" x 11' 8" (5.05m x 3.56m)
Double glazed windows to the front and side of the property, feature multi-fuel fireplace, tiled flooring, stairs to the first floor, understairs storage, double doors into the kitchen and a wall mounted radiator.

Kitchen

12' 4" x 9' 3" (3.76m x 2.82m)
Wall and base units, one bowl sink/drainers, oven with extractor over, space for white goods, opening to the utility area and a wall mounted radiator. Barn-style door to the rear outside space.

Utility Area

Plumbing for washing machine and wall mounted gas boiler.

Bathroom

Obscure double glazed window to the rear of the property, bath with shower over and glass screen, WC, wash hand basin,

First Floor

Bedroom One

11' 11" x 8' 11" (3.63m x 2.72m)

Double glazed window to the front and side of the property and a wall mounted radiator.

Bedroom Two

9' 10" x 8' 11" (3.00m x 2.72m)

Double glazed window to the side of the property, loft hatch and a wall mounted radiator.

Bedroom Three

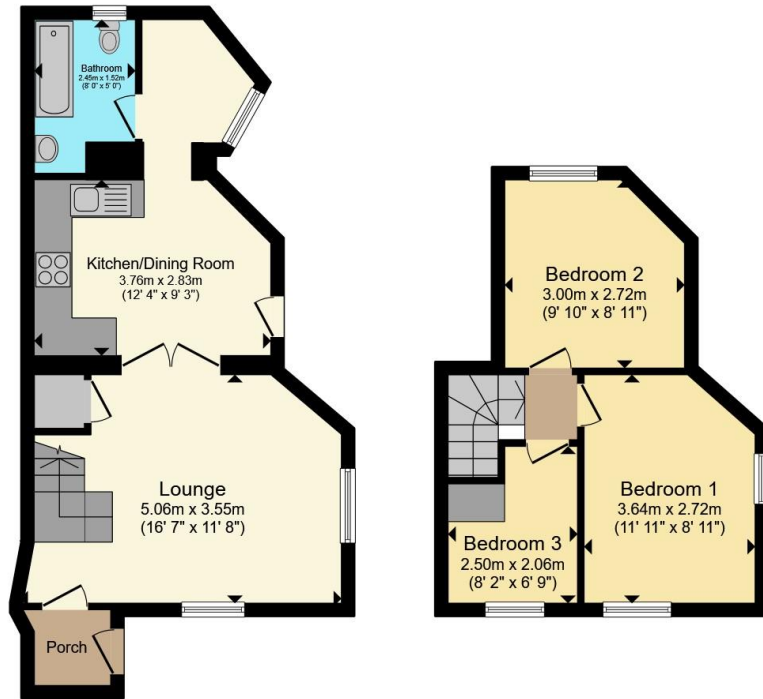
8' 2" x 6' 9" (2.49m x 2.06m)

Double glazed window to the front of the property, storage cupboard and a wall mounted radiator.

Rear Of The Property

The delightful outdoor area offers a low maintenance upkeep with ample space for garden furniture. There is also an outside storage area providing additional storage and a wooden gate taking you to the front of the property.





Ground Floor

First Floor

Total floor area 63.5 m² (684 sq.ft.) approx

This floor plan is for illustrative purposes only. It is not drawn to scale. Any measurements, floor areas (including any total floor area), openings and orientation are approximate. No details are guaranteed, they cannot be relied upon for any purpose and they do not form part of any agreement. No liability is taken for any error, omission or misstatement. A party must rely upon its own inspection(s). Powered by www.propertybox.io



To view this property please contact Connells on

T 01626 365 064
E newtonabbot@connells.co.uk

4 Bank Street
 NEWTON ABBOT TQ12 2JW

view this property online connells.co.uk/Property/NAB313242

directions to this property:
 What3Words///pens.effort.bleak

EPC Rating: D Council Tax
 Band: B

Tenure: Freehold



1. MONEY LAUNDERING REGULATIONS Intending purchasers will be asked to produce identification documentation at a later stage and we would ask for your co-operation in order that there will be no delay in agreeing the sale. 2. These particulars do not constitute part or all of an offer or contract. 3. The measurements indicated are supplied for guidance only and as such must be considered incorrect. Potential buyers are advised to recheck measurements before committing to any expense. 4. We have not tested any apparatus, equipment, fixtures, fittings or services and it is in the buyers interest to check the working condition of any appliances.

Connells Residential is registered in England and Wales under company number 1489613, Registered Office is Cumbria House, 16-20 Hockliffe Street, Leighton Buzzard, Bedfordshire, LU7 1GN. VAT Registration Number is 500 2481 05.

See all our properties at www.connells.co.uk | www.rightmove.co.uk | www.zoopla.co.uk

Property Ref: NAB313242 - 0012