



Selbourne Avenue, TW3

£399,950

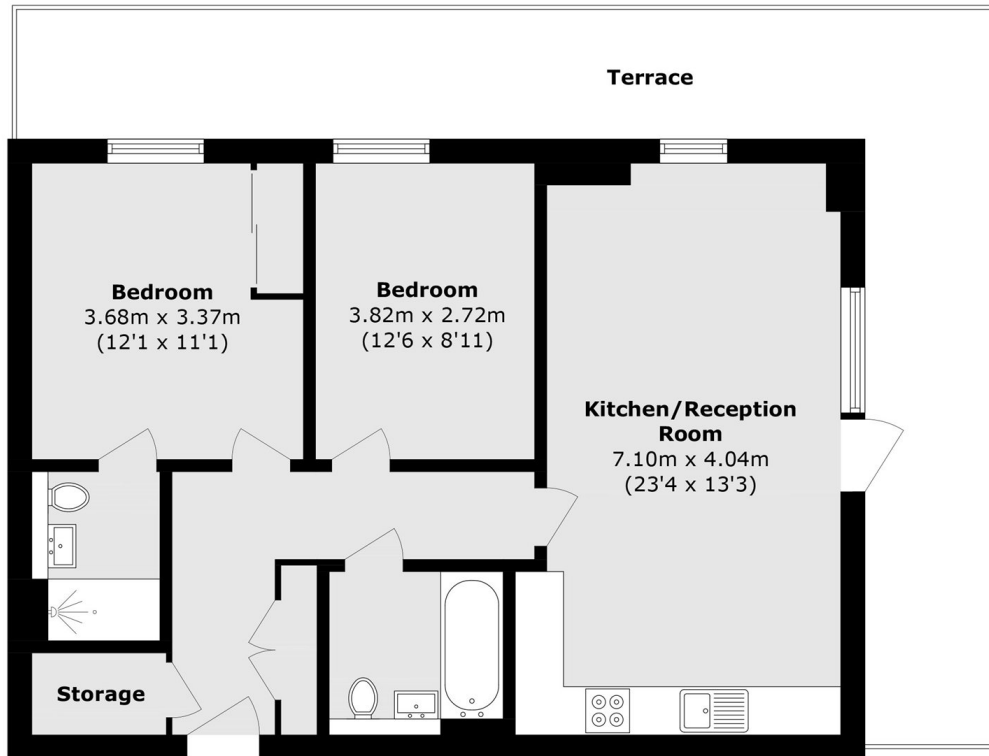
A very well presented ground floor, two double bedroom apartment, situated in a modern building just outside the high street. Benefits include a fully fitted kitchen, two modern bathrooms, and the highlight of a wrap around outside terrace.

The property is a short walk from Hounslow East Underground Station, offering quick Piccadilly Line links to Central London and Heathrow Airport. It is also moments from Hounslow High Street, with its wide range of shops, cafés and restaurants, as well as nearby parks and green spaces.

Features

- Ground Floor Apartment
- Two Double Bedrooms
- Two Bathrooms
- Private Terrace
- Long Lease
- Close to Amenities

Selbourne Avenue, Hounslow, TW3



Total area (approx.): 70.7 sq. m (761.0 sq. ft)
Terrace area (approx): 32.2 sq. m (346.6 sq. ft)