



**1 Bed
Room
located in**



25 Knighton Road

Bristol

BS10 5SE



£750

Professional House Share | 4 Bedrooms | All Bills Included | Available Now

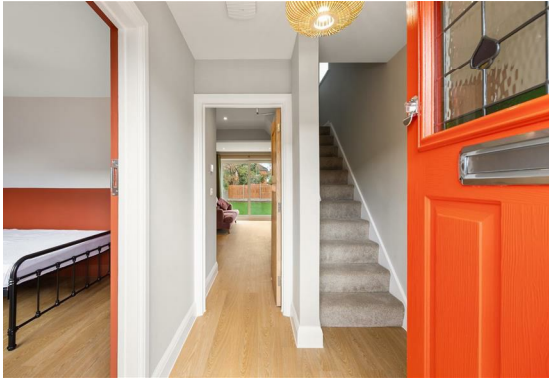
A beautifully presented and newly refurbished four-bedroom professional house share, available immediately in Bristol. This stylish property has been finished to a high standard throughout and offers an excellent opportunity for working professionals seeking quality, hassle-free accommodation.

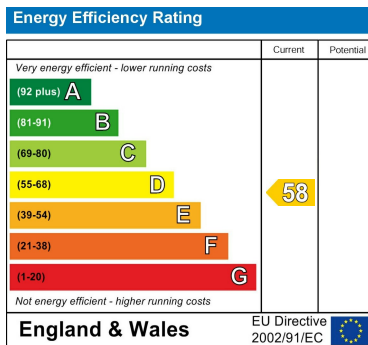
The house features a newly fitted modern kitchen, bright and well-proportioned communal spaces, and a large private garden, perfect for relaxing after work. Four generously sized bedrooms are available, one of which benefits from its own ensuite bathroom, with a further well-appointed bathroom serving the remaining rooms. Parking is available on the private driveway.

Fast 1gb WiFi is included throughout the property, along with all household bills, making budgeting simple and straightforward. The house is fully furnished to a contemporary standard, so you can move in with ease.

Ideally located for Southmead Hospital and the Filton aerospace sector, this property is well suited to healthcare and aerospace professionals looking for comfortable, modern shared living close to their place of work.

Property highlights:





DIRECTIONS

CONTACT

Shore House Westbury Hill
Westbury-on Trym, Bristol
BS9 3AA

E: elliott.sherwood@frontdoorlettings.co.uk

T: 0117 457 8577

frontdoorlettings.co.uk

