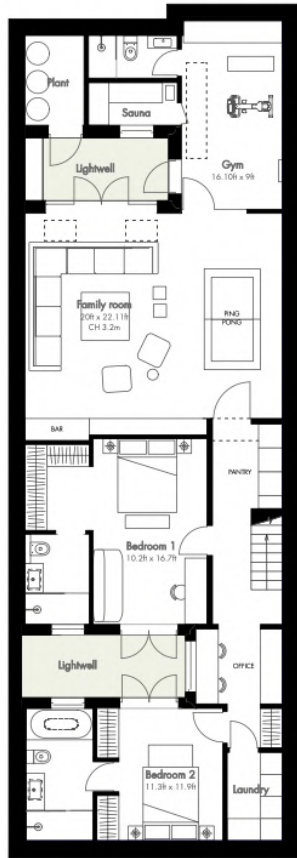


P V G

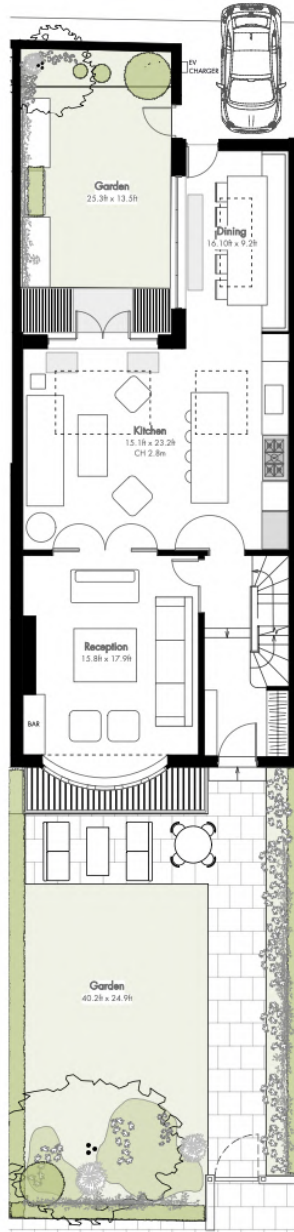


100 Old Church Street, SW3  
Five bed (3545 sq ft) house by local developer PVG Design  
Four floors, 24 ft wide, garden front and rear and private parking  
Separate gym, sauna, laundry, pantry and bar areas  
AC throughout, marble slabs, wide plank oak floor, bespoke joinery

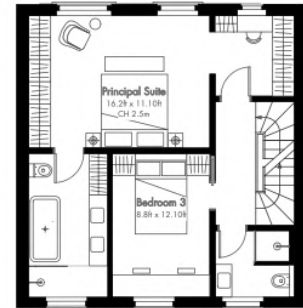
100 Old Church Street, SW3 6EP  
Approx. Gross Internal Floor Area Total: 3545 sqft / 330sqm



**BASEMENT FLOOR**



**GROUND FLOOR**



**FIRST FLOOR**



**SECOND FLOOR**











