



Crouch Hill, N4

£375,000

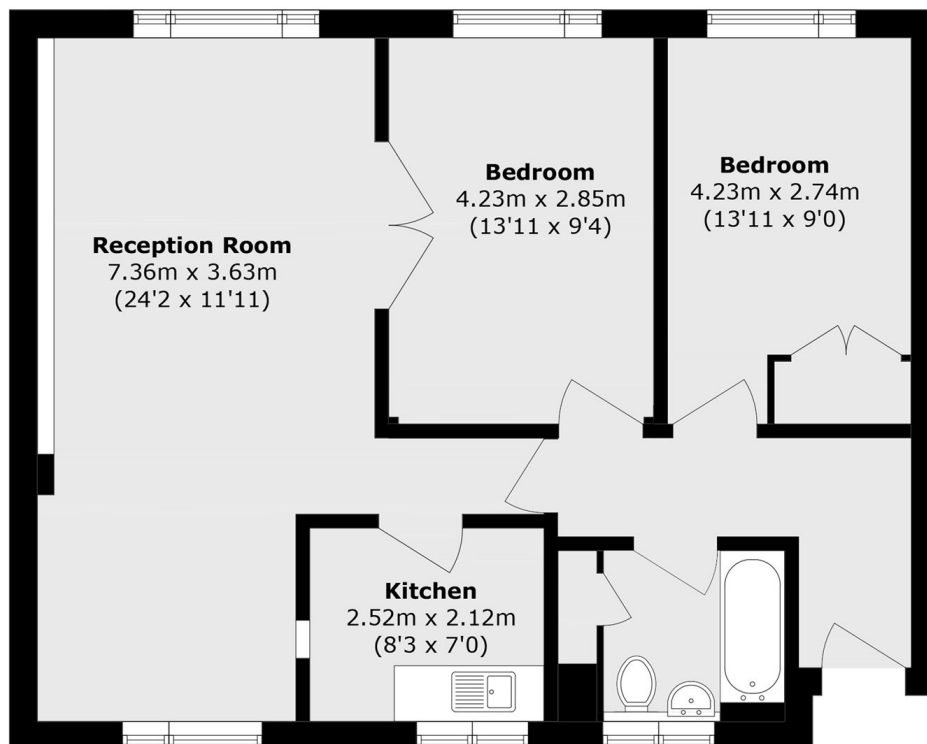
A two bedroom first floor flat forming part of an attractive converted building. In need of modernisation, making it an ideal project for investors or buyers looking to add value and create a bespoke home.

Easy access to the Parkland Walk and the local shops and cafés of both Crouch End and Stroud Green. Great transport links of Finsbury Park (Piccadilly & Victoria Lines) and Crouch Hill Overground are nearby.

Features

- Two Bedroom
- First Floor Flat
- In Need Of Modernisation
- Purpose Built Block
- Long Lease
- Close to Transport

Crouch Hill, London, N4



Total area (approx.): 68.3 sq. m (735.1 sq. ft)