



Milliers Court Worthing Road, East Preston

Leasehold

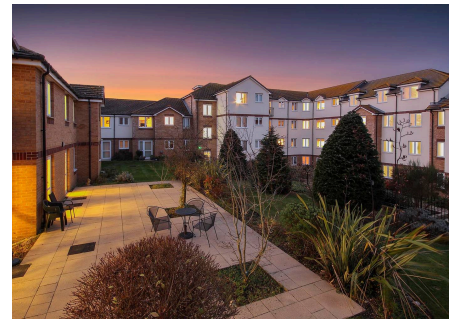
Views over the communal gardens from the living room, kitchen and bedroom • Spacious one-bedroom accommodation • Modern shower room • Popular and well-managed retirement development • Age restriction: 60+ for single occupants, 55+ for couples • 24-hour emergency careline, live-in house manager and well-maintained communal facilities. These include a residents' lounge, laundry room and guest suite.

Cooper Adams

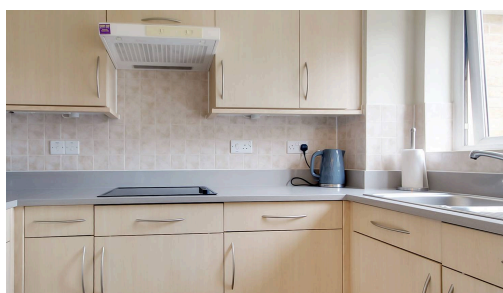
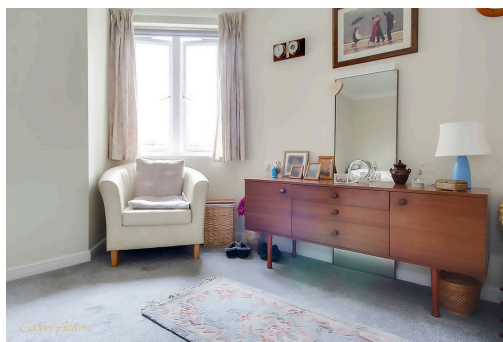
Enjoying pleasant views over the communal gardens from the living room, kitchen and bedroom, this well-presented first-floor retirement apartment offers spacious and comfortable accommodation throughout. The property features a generous sitting room, fitted kitchen, double bedroom, modern shower room and useful storage. Located within a popular and well-managed retirement development, residents benefit from a live-in House Manager, 24-hour emergency careline, residents' lounge, laundry room and guest suite for visiting family and friends. Conveniently situated close to local shops, bus routes and the train station, the apartment offers independent living with excellent amenities close at hand. Please note that age restrictions apply: single occupants must be aged 60 or over, or 55 and over if purchasing as a couple.

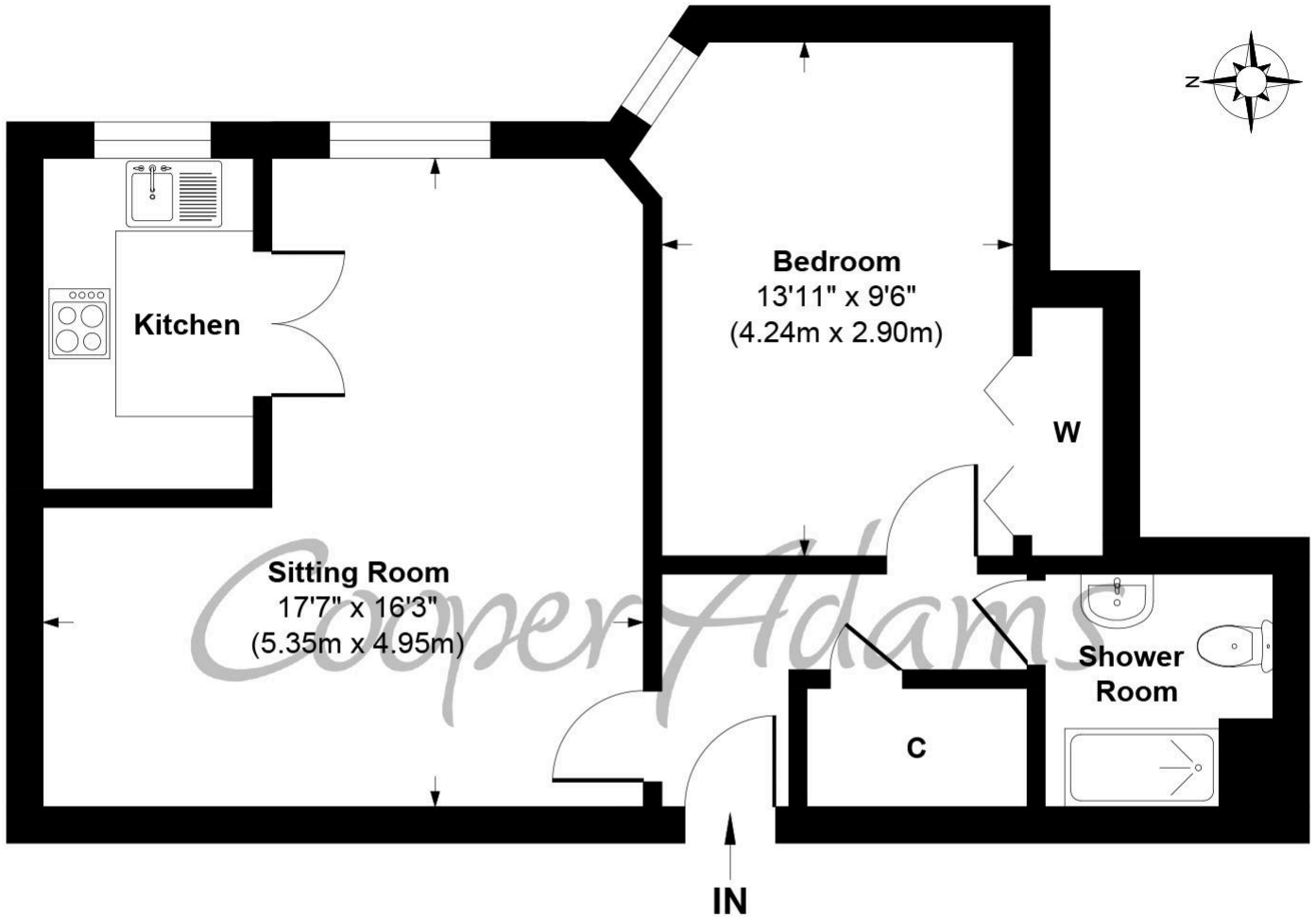
This property is "Legally Prepared." Cooper Adams has gathered key documents, including the title, plans, property forms, warranties, and EPC. Buyers must request these before offering.

The seller requires a 'Reservation Agreement' to protect serious buyers as they



East Preston, a charming seaside village in West Sussex, is nestled just south of the South Downs National Park. It exudes a strong sense of community, often described as Living in the country by the sea.





Approximate Floor Area
552 sq. ft
(51.30 sq. m)

Milliers Court Worthing Road, East Preston, BN16 1AR
Approx. Gross Internal Floor Area 552 sq. ft / 51.30 sq. m

Illustration for identification purposes only, measurements are approximate, not to scale

Copyright © Cooper Adams



You can include any text here. The text can be modified upon generating your brochure.

Material Information includes important facts that may affect a buyer's decision to view or buy, such as tenure, restrictions, utilities, construction, and other key details. Full information for this property is available at www.cooper-adams.com. We may offer buyer services and receive referral benefits - details on request. All content is copyright Cooper Adams. Details and floor plans are for guidance only and don't form part of any contract. Measurements are maximums including bays and alcoves. Floor plan sizes are approximate. Images, maps and plans are not to scale. Appliances/services not tested. Cooper Adams Estates Ltd, Bishopstone, Reg No: 07127482. VAT No: 982847172.

Lettings | Sales | Free valuations | Land & New Homes | Mortgages

FULL DETAILS OF THE MATERIAL INFORMATION ARE ON OUR WEBSITE - VIEWING STRICTLY BY APPOINTMENT WITH COOPER ADAMS

FOR MORE PHOTOS AND TO BOOK A VIEWING VISIT OUR WEBSITE - Tel: 01903 791 792 - www.cooper-adams.com