



Windsor Court
Vicarage Crescent, SW11

CHESTERTONS





A fantastic one-bedroom apartment with allocated parking and a private terrace.

Well situated in a quiet and well-maintained gated development close to the highly desirable Battersea Square with its 'village' appeal, renowned for its pavement cafés and restaurants and minutes' walk from the River Thames.

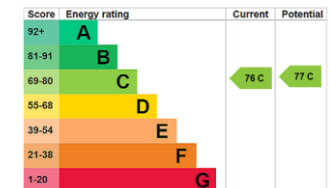
The accommodation comprises an entrance hall with WC and double doors leading into the open-plan reception/kitchen/diner with fantastic large windows with pleasant views over the neighbouring park. The room offers ample space for both relaxing and dining, the kitchen area features generous worktop and cupboard space and built in appliances and is completed with a useful breakfast bar. The room is completed with a feature spiral staircase that provides access to the upper floor.

The upper floor comprises a generously sized double bedroom with inbuilt wardrobes, en-suite bathroom and access onto the large south facing private terrace. The property's overall size is in excess of 742sq ft and the apartment also benefits from its own designated, secure off-street parking space and is offered chain-free.

The property is superbly located within easy access of unrivalled transport links from Clapham Junction, as well as numerous regular bus routes including the local 'Hopper' bus with services to Victoria Station—all providing excellent cross-London links. There are an array of shops, bars, restaurants, and amenities within a short distance, including in Battersea Square itself, with beautiful Battersea Park nearby providing superlative recreational space, as well as the banks of the River Thames. *Furniture in the images is CGI generated

- One bedroom
- Private allocated parking
- Split level
- 742sq ft
- Gated development
- Private terrace

Asking Price £700,000

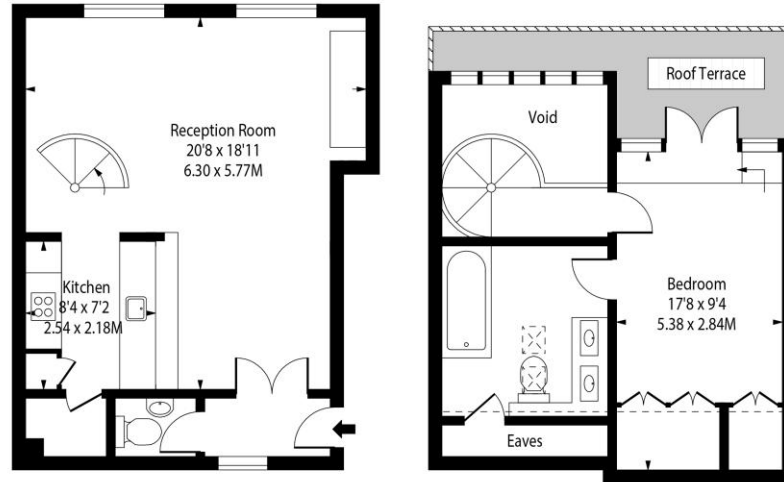


Tenure: Share of Freehold 984 years
Service Charge: £2,802.45 Per Annum
Ground Rent: TBC
Local Authority: Wandsworth Council
Council Tax Band: F

Chestertons Battersea Park & Nine Elms Sales

62-64 Battersea Bridge Road
 London
 SW11 3AG
 batterseapark@chestertons.co.uk
 0203 040 8700
 chestertons.co.uk

Windsor Court, SW11



Second Floor

Third Floor

Approx Gross Internal Area 742 Sq Ft - 68.93 Sq M

Includes Limited Use Area and Eaves- 69 Sq Ft
Excludes Void Area

Drawn in Accordance with IPMS 3B: Residential
Illustration For Identification Purposes Only - Not to Scale
www.homespacestudio.co.uk - Ref. No. 54164



Chesterton UK Services Limited trading as Chestertons for themselves and for the vendor of this property whose agents they are, give notice that (i) these particulars do not constitute any part of an offer or contract, (ii) all statements contained within these particulars are made without responsibility on the part of Chestertons or the vendor, (iii) whilst made in good faith, none of the statements contained within these particulars are to be relied upon as a statement or representation of fact, (iv) any intending purchasers must satisfy themselves by inspection or otherwise as to the correctness of each of the statements contained within these particulars, (v) the vendor does not make or give either Chestertons or any person in their employment any authority to make or give representation or warranty whatsoever in relation to this property. Wide angle lenses may be used. ©Copyright Chestertons | Chesterton UK Services Limited | Registered Office 40 Connaught Street, Hyde Park, London W2 2AB Registered Company Number 05334580.



This paper is
100% recyclable