

Tenor Drive, Hoo, Rochester, ME3 9GZ

Guide Price £150,000 - £170,000

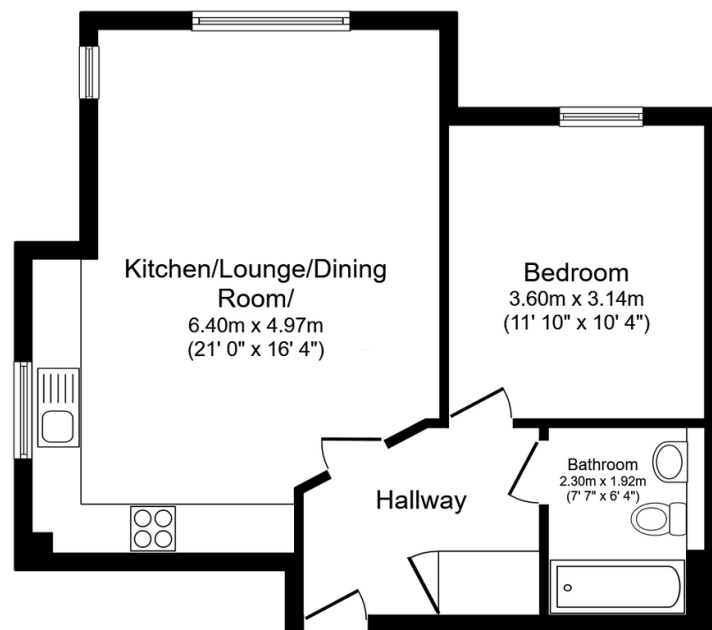
🛏 1 🚿 1 🚗 1



Guide Price £150,000 - £170,000 Set on the ground floor this home in Tenor Drive will make an ideal first home, investment or suitable downsize being on one level for an easy lifestyle. Ready to move into from day one its neutrally decorated and located within a popular village. There is a range of amenities in the Village whilst being close to motorway access and Strood town centre with a mainline station and several large shopping outlets. QUOTE AP0490

Key Features

- 1 Bedroom Ground Floor Apartment
- Allocated Parking Space
- Large walk in storage cupboard & Fitted Wardrobes
- Spacious Kitchen /Living Area
- Easy One Level Access
- No Forward Chain
- Close to Shops, Doctors & Bus Links
- Easy Access To M2 Motorway
- Tenure Leasehold / Council Tax Band B
- QUOTE AP0490



Floor Plan

Floor area 50.5 sq.m. (543 sq.ft.)

Total floor area: 50.5 sq.m. (543 sq.ft.)

This floor plan is for illustrative purposes only. It is not drawn to scale. Any measurements, floor areas (including any total floor area), openings and orientations are approximate. No details are guaranteed, they cannot be relied upon for any purpose and do not form any part of any agreement. No liability is taken for any error, omission or misstatement. A party must rely upon its own inspection(s). Powered by www.Propertybox.io