



15 Churchfields
, Broxbourne, EN10 7JU
Guide price £875,000

4 1 2 C

15 Churchfields, Broxbourne, EN10 7JU

Positioned on one of Broxbourne’s most prestigious roads, this elegant four-bedroom character home combines timeless period charm with contemporary living. Behind its handsome red-brick façade lies a thoughtfully designed interior, where every detail has been considered to create a home of both warmth and sophistication. With a show-stopping open-plan kitchen and family space, a substantial 118ft rear garden, driveway parking for multiple vehicles, and an additional plot with planning permission for a double garage and studio, this is a truly rare opportunity to secure a long-term family home in one of Hertfordshire’s most sought-after settings.



Step Inside:

Step Outside:

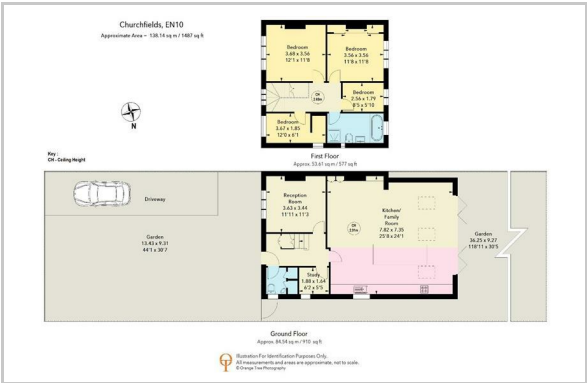
Location:

Buyers Note:

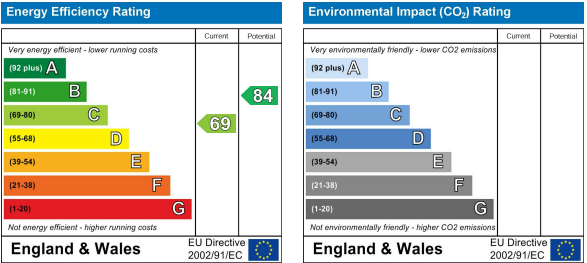
Area Map



Floor Plan



Energy Efficiency Graph



These particulars, whilst believed to be accurate are set out as a general outline only for guidance and do not constitute any part of an offer or contract. Intending purchasers should not rely on them as statements of representation of fact, but must satisfy themselves by inspection or otherwise as to their accuracy. No person in this firms employment has the authority to make or give any representation or warranty in respect of the property.