

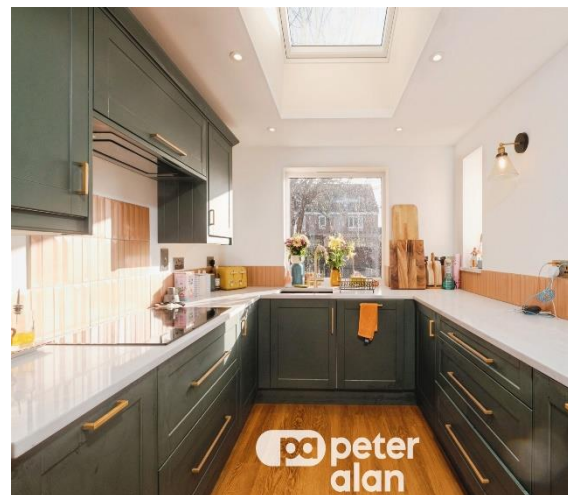


**pa** peter  
alan

## Hamilton Way

**£365,000**

- Stylish ground floor living space
- New carpets Dec 2025
- Feature garage conversion
- Lawned garden to rear
- Driveway Parking
- EPC Rating: C



 3  2  2

**pa** peter  
alan

01600 714355  
monmouth@pablack.co.uk





## About the property

Desirable cul-de-sac setting, on the edge of Town. Updated interior offering superb open plan high specification Kitchen with Dining/Living area with bi-fold doors leading out to terrace and rear garden. Converted garage to provide, useful Study, Cloakroom and Utility Area.

The accommodation offers the following features; with particular emphasis on a superbly re-configured ground floor, to provide an updated easy modern living arrangement, with spacious Inner Hallway, Sitting Room facing the front of the property, wood effect flooring, flowing though into the contemporary style Dining and Living Area, with focus on the three wide panel bi-folding doors which open out onto the paved terrace, and beyond to the lawned area. The open plan room extends through to the beautifully upgraded fitted Kitchen, which comprises; range of base and wall units, with deep pan soft closing drawers, work surface with breakfast bar, ceramic hob with fan above, eye level double oven, integrated dishwasher, fridge/freezer. Window to side and rear, plus roof light, creating interest. Door through to Study/child's playroom, door to Cloakroom, plus there is an additional useful area created to offer Utility store, with space for appliances, (part of the former garage, still provides a garden store area). The First Floor offers, main Bathroom, three Bedrooms, (principal with an Ensuite Shower Room). Outside there is driveway parking to the front, with further private lawned garden. Leading around the side to the sizeable rear lawned garden, enclosed by fencing and mixed shrub borders.







## Accommodation

**Front Porch**

**Inner Hall**

**Sitting Room**

14' 1" max x 12' max (4.29m max x 3.66m max)

**Dining/Living Area**

15' 5" x 9' 8" (4.70m x 2.95m)

**Kitchen**

13' 2" x 8' 4" (4.01m x 2.54m)

**Study Area**

9' 2" x 5' (2.79m x 1.52m)

**Cloakroom**

**Utility Area**

**On The First Floor**

**Bedroom 1**

9' 8" x 8' 7" (2.95m x 2.62m)

**Ensuite Shower Room**

**Bedroom 2**

9' 3" x 8' 11" (2.82m x 2.72m)

**Bedroom 3**

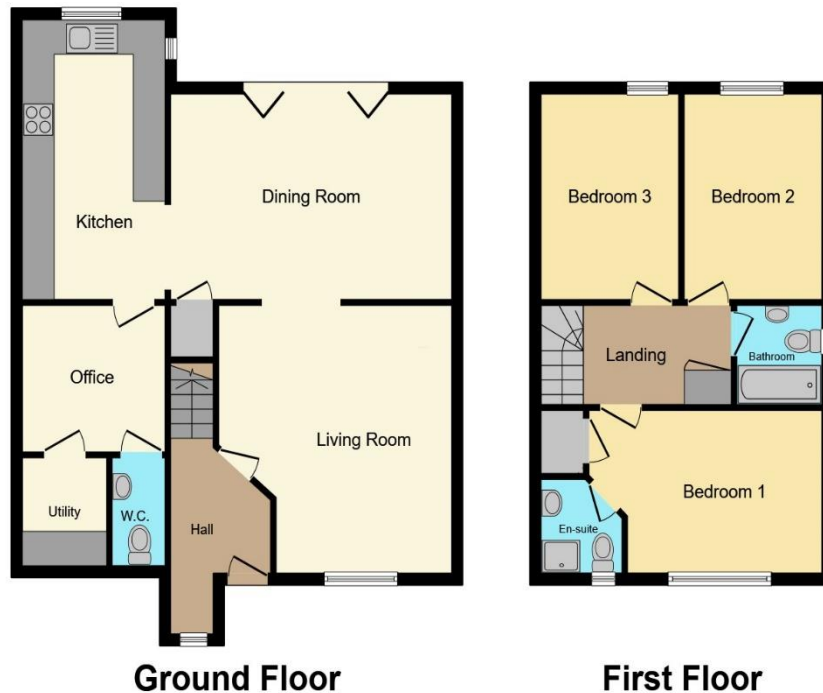
8' 11" x 6' (2.72m x 1.83m)

**Bathroom**

01600 714355

monmouth@pablack.co.uk

## Floorplan



Total floor area 115.8 m<sup>2</sup> (1,246 sq.ft.) approx

This floor plan is for illustrative purposes only. It is not drawn to scale. Any measurements, floor areas (including any total floor area), openings and orientation are approximate. No details are guaranteed, they cannot be relied upon for any purpose and they do not form part of any agreement. No liability is taken for any error, omission or misstatement. A party must rely upon its own inspection(s). Powered by [www.propertybox.io](http://www.propertybox.io)

## Important Information

Note while we endeavour to make our sales details accurate and reliable, if there is any point which is of particular interest to you, please contact the office and we will be pleased to confirm the position for you. We have not personally tested any apparatus, equipment, fixtures, fittings or services and cannot verify they are in working order or fit for their purposes. Nothing in these particulars is intended to indicate that carpets or curtains, furnishings or fittings, electrical goods (whether wired or not). Gas fires or light fittings or any other fixtures not expressly included form part of the property offered for sale. This computer generated Floorplan, if applicable, is intended as a general guide to the layout and design of the property. It is not to scale and should not be relied upon for dimensions. Tenure: We cannot confirm the tenure of the property as we have not had access to the legal documents. The buyer is advised to obtain verification from their solicitor or surveyor.

Peter Alan Limited is registered in England and Wales under company number 2073153, Registered Office is Cumbria House, 16-20 Hockliffe Street, Leighton Buzzard, Bedfordshire, LU7 1GN. VAT Registration Number is 500 2481 05. For activities relating to regulated mortgages and non-investment insurance contracts, Peter Alan Limited is an appointed representative of Connells Limited which is authorised and regulated by the Financial Conduct Authority. Connells Limited's Financial Services Register number is 302221. Most buy-to-let