


- One Bedroom First Floor Flat
- Newly Redecorated
- New Carpets & Flooring
- Parking Space
- Located in a Quiet Close
- Favoured Polegate Location
- Close to Mainline Railway Station & Amenities
- Close to Cuckoo Trail



£750

 1 BEDROOM

 1 RECEPTION

 1 BATHROOM

 GARAGE

Honeycrag Close, Polegate

Honeycrag Close, Polegate

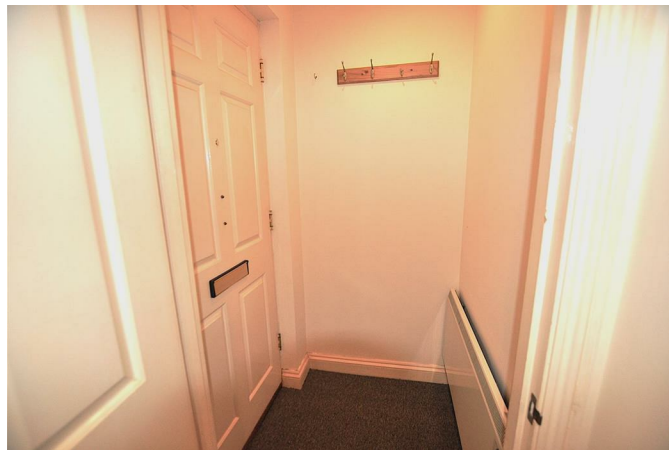
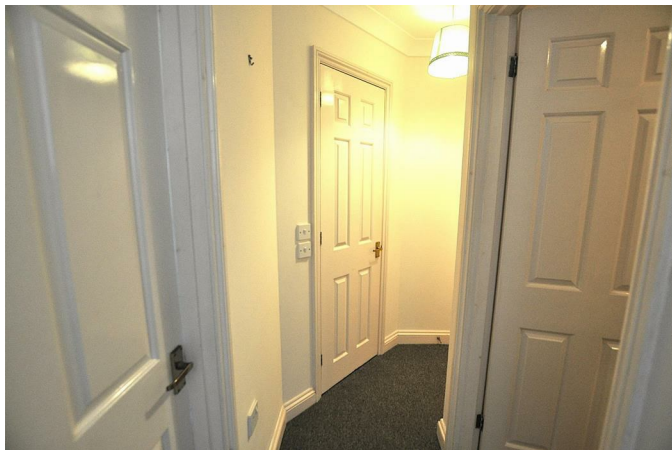
DESCRIPTION

A well-presented one-bedroom first floor flat, newly redecorated throughout and finished with new carpets and flooring.

Situated in a quiet residential close in Polegate, the flat benefits from a parking space and is conveniently located within easy reach of the mainline railway station and local amenities. For those who enjoy the outdoors, the popular Cuckoo Trail is also nearby.

Available immediately, this property is well suited to those seeking a peaceful location with good transport links.

Call us on 01323 840666 for your appointment to view



Honeycrag Close, Polegate

Entrance Lobby

Entrance Hall

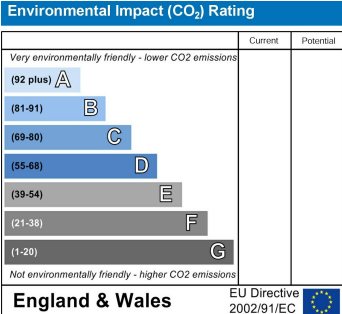
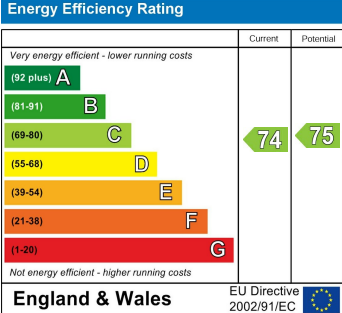
Lounge 4.44 x 2.64 (14'6" x 8'7")

Kitchen 2.30 x 2.05 (7'6" x 6'8")

Bedroom 3.43 x 2.47 (11'3" x 8'1")

Bathroom 2.07 x 1.72 (6'9" x 5'7")

Honeycrag Close, Polegate



You may download, store and use the material for your own personal use and research. You may not republish, retransmit, redistribute or otherwise make the material available to any party or make the same available on any website, online service or bulletin board of your own or of any other party or make the same available in hard copy or in any other media without the website owner's express prior written consent. The website owner's copyright must remain on all reproductions of material taken from this website.

47 High Street | Hailsham | East Sussex | BN27 1AN

Tel: 01323 840666
www.stevensandcarter.co.uk

