

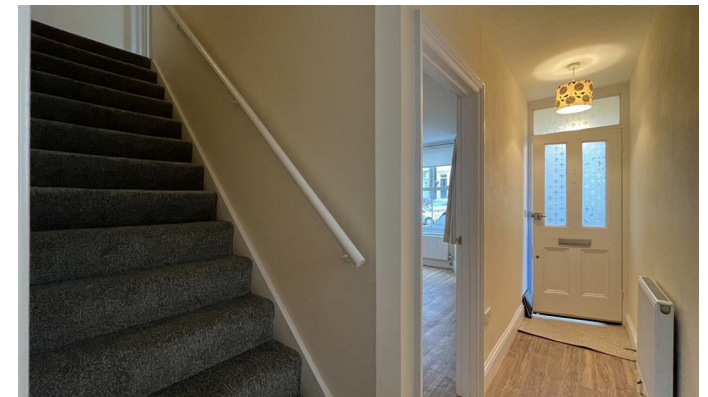


## Earlsbrook Road , Redhill RH1 6DP

- 2 Double Bedrooms
- 2 Bathrooms
- Split level
- Driveway parking
- Private entrance

£1,600 Per Month

Local Authority **Reigate and Banstead Borough Council**  
Council Tax Band **C**  
EPC Rating **C**



**Property Connexions (Gatwick) Ltd**  
**Lettings Office**

Norwood Hill Road, Charlwood, Surrey,  
RH6 0EB

**Contact**

01293 822585  
[info@propertyconnexions.co.uk](mailto:info@propertyconnexions.co.uk)

Agents Note: Whilst every care has been taken to prepare these particulars, they are for guidance purposes only. All measurements are approximate and for general guidance purposes only and whilst every care has been taken to ensure accuracy, they should not be relied upon and potential buyers/tenants are advised to recheck the measurements.