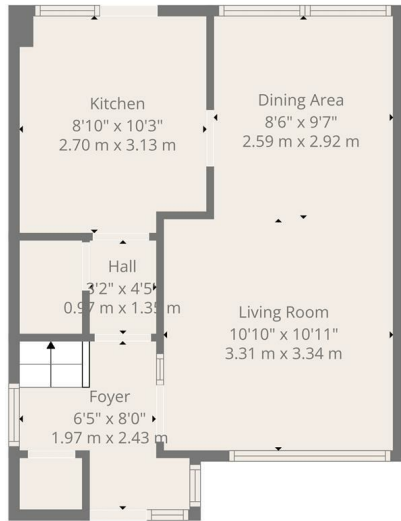
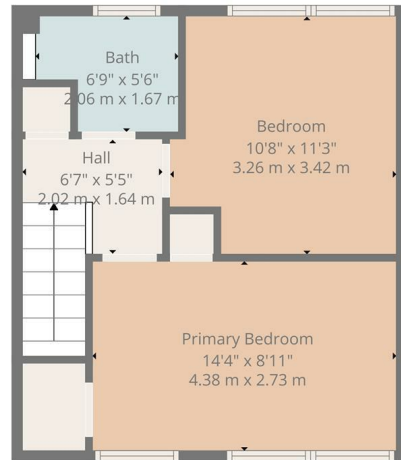




OFFERS OVER
£90,000
Muirhouse Road
Motherwell, ML1 2LR



Ground Floor



1st Floor



TOTAL: 748 sq. ft, 70 m²
 Ground floor: 385 sq. ft, 36 m², 1st floor: 363 sq. ft, 34 m²
 EXCLUDED AREAS: WALLS: 81 sq. ft, 7 m²

Floor Plan Created By Cubicasa App. Measurements Deemed Highly Reliable But Not Guaranteed.



Energy Efficiency Rating		Current	Potential
Very energy efficient - lower running costs			
(92 plus)	A		
(81-91)	B		
(69-80)	C		
(55-68)	D	67	73
(39-54)	E		
(21-38)	F		
(1-20)	G		
Not energy efficient - higher running costs			
Scotland		EU Directive 2002/91/EC	

Agents Note: Whilst every care has been taken to prepare these particulars, they are for guidance purposes only. All measurements are approximate and are for general guidance purposes only and whilst every care has been taken to ensure their accuracy, they should not be relied upon and potential buyers/tenants are advised to recheck the measurements



HEMMINGS HOMES

OFFICE ADDRESS

376 Brandon Street
 Motherwell
 North Lanarkshire
 ML1 1XA

OFFICE DETAILS

01698 263413
enquiries@hemmingshomes.co.uk
hemmingshomes.co.uk