



 2  1  1  C

Helmsman Rise, St. Leonards-On-Sea, TN38 8BQ

£1,075 Per Calendar Month



Oliver & Bailey

01424 834000 | 01424 533 555

Info@oliverbaileylettings.co.uk
www.oliverbaileylettings.co.uk

Hallway

Living Room

22'11" x 10'4" (7.01m x 3.17m)

Kitchen

9'1" x 6'9" (2.77m x 2.06m)

Bedroom One

12'2" x 10'7" (3.73m x 3.23m)

Bedroom Two

Bathroom

Allocated parking space



Furnished Options: Unfurnished

Council Tax Band: B

Available Date: 8th January 2026

**Oliver
& Bailey**

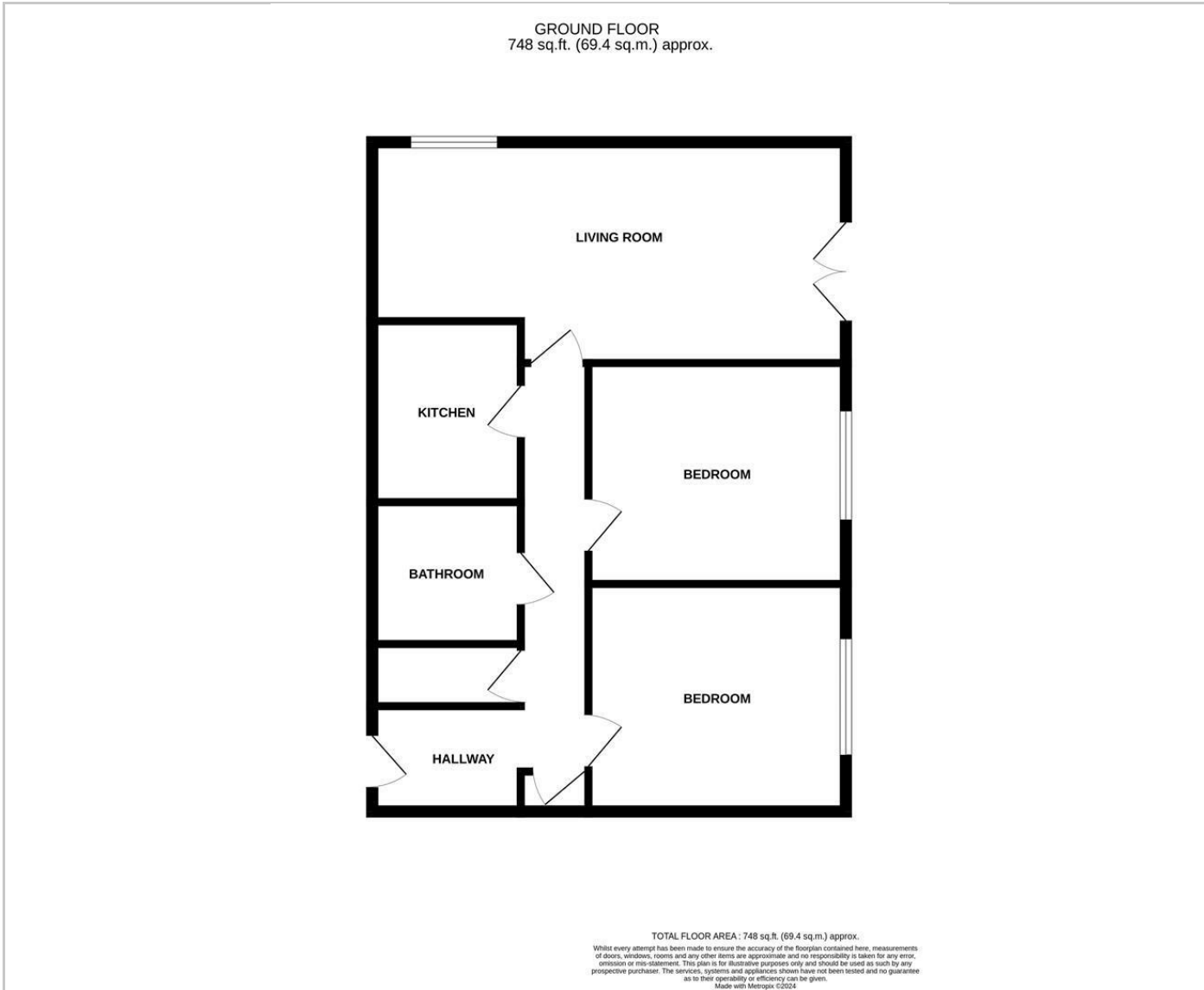
SECOND FLOOR APARTMENT WITH JUILLETTE BALCONY.... Call Robyn or Georgia at Oliver & Bailey to view this well presented two bedroom apartment.

Located on the High Beech development within close reach to the A21, with direct links to Battle and Tunbridge Wells. The property is also a short distance to popular schools and local amenities.

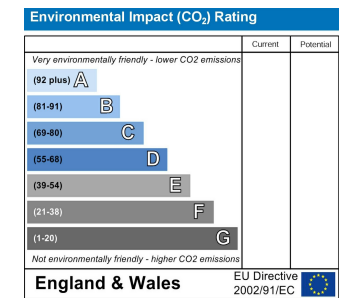
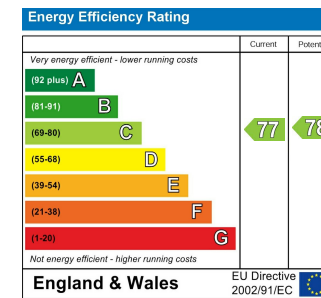
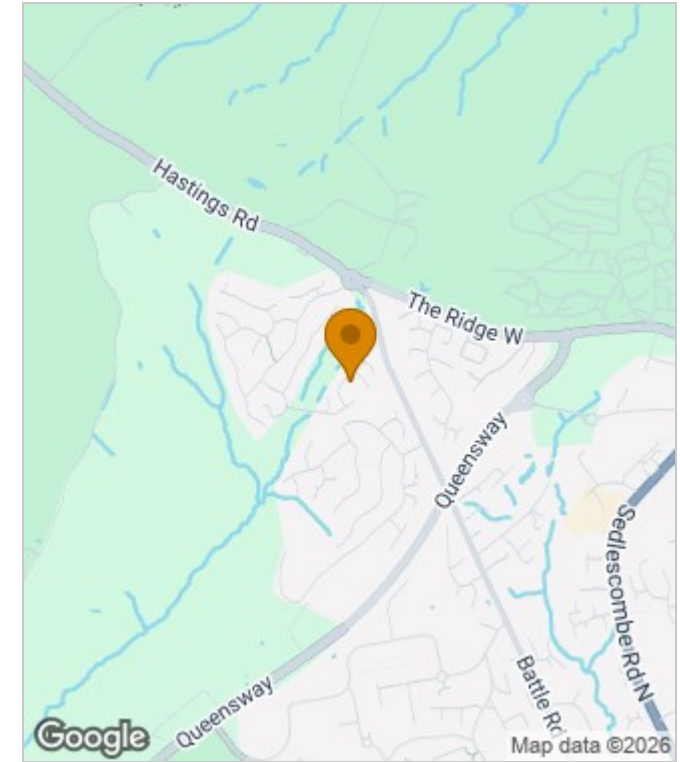
Neutrally redecorated throughout, the apartment comprises, a spacious living room with Juliette balcony to the rear, separate kitchen with appliances, two good sized double bedrooms and bathroom with shower over the bath.

Further benefits to the property are gas central heating, double glazing and allocated parking for one car.

FLOORPLAN



AREA MAP



These particulars, whilst believed to be accurate are set out as a general outline only for guidance and do not constitute any part of an offer or contract. Intending purchasers should not rely on them as statements of representation of fact, but must satisfy themselves by inspection or otherwise as to their accuracy. No person in this firm's employment has the authority to make or give any representation or warranty in respect of the property.