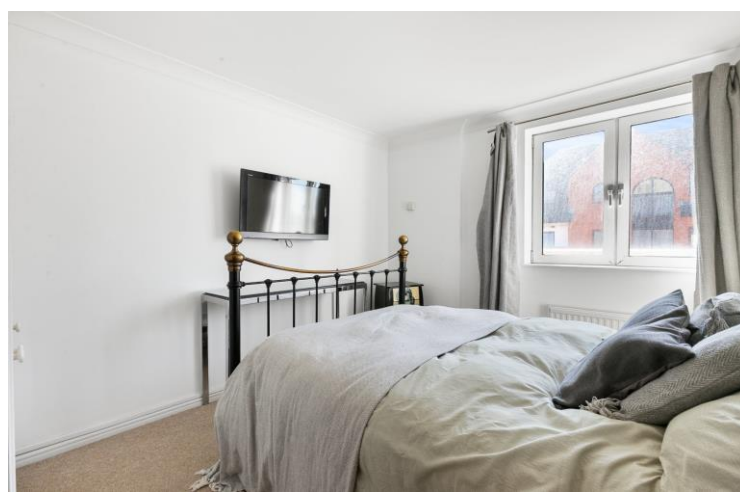




Ferrymans Quay  
William Morris Way, SW6

CHESTERTONS





A large seventh floor apartment, offering direct views of the River Thames and across to Battersea from the south facing balcony.

Extending to just under 800 square feet, the apartment boasts a large entrance hall, with access to all principle rooms, two good size double bedrooms, separate four-piece bathroom suite and large south facing kitchen, living and dining area. The sale of the apartment also includes a dedicated and secure underground off-road parking space, demised to the lease.

Ferrymans Quay is situated beside the renowned Harbour Club and is also close to Imperial Wharf which provides several shops, restaurants, Imperial Park green space, and Imperial Wharf over ground station which gives access to Clapham Junction (1 stop) and West Brompton (District Line, 1 stop).

- 
- Large seventh floor apartment, view over the Thames
  - Open plan kitchen, living/dining, balcony adjacent
  - Two bedrooms, one bathroom
  - Walking distance to the renowned Chelsea Harbour Club

Asking Price £650,000

---

**Tenure:** Leasehold 89 years 3 months  
**Service Charge:** To be confirmed.  
**Ground Rent:** £100 PA  
**Local Authority:** Hammersmith & Fulham  
**Council Tax Band:** G

*Chestertons Fulham Road Sales*

654 Fulham Road  
Fulham  
London  
SW6 5RU

fulham@chestertons.co.uk  
020 7384 9898

# William Morris Way, SW6

Approximate gross internal area

72.44 sq m / 780 sq ft

Key :  
CH - Ceiling Height



**Seventh Floor**

This plan is not to scale and must be used as layout guidance only. All measurements and areas are approximate and should not be relied upon to provide accurate information. This plan must not be relied upon when making property valuations, design considerations or any other such relevant decisions. We accept no responsibility or liability (whether in contract, tort or otherwise) in relation to any loss whatsoever arising from or in connection with any use of this plan or the adequacy, accuracy or completeness of it or any information within it.

Chesterton UK Services Limited trading as Chestertons for themselves and for the vendor of this property whose agents they are, give notice that (i) these particulars do not constitute any part of an offer or contract, (ii) all statements contained within these particulars are made without responsibility on the part of Chestertons or the vendor, (iii) whilst made in good faith, none of the statements contained within these particulars are to be relied upon as a statement or representation of fact, (iv) any intending purchasers must satisfy themselves by inspection or otherwise as to the correctness of each of the statements contained within these particulars, (v) the vendor does not make or give either Chestertons or any person in their employment any authority to make or give representation or warranty whatsoever in relation to this property. Wide angle lenses may be used. ©Copyright Chestertons | Chesterton UK Services Limited | Registered Office 40 Connaught Street, Hyde Park, London W2 2AB Registered Company Number 05334580.



This paper is  
100% recyclable