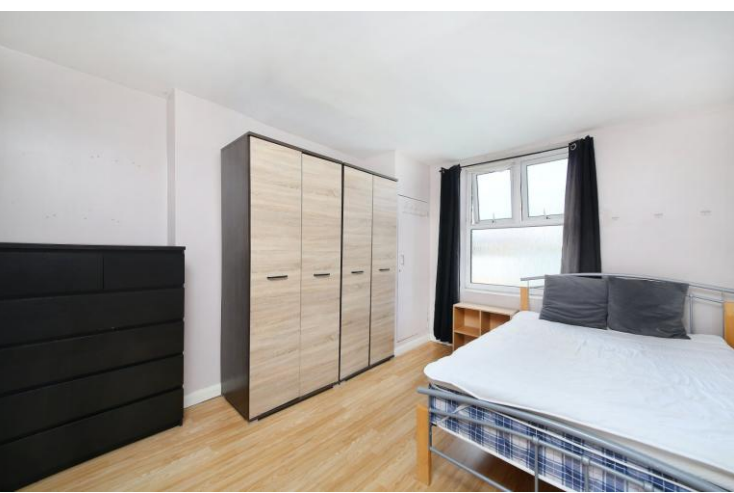




Clapham Road
SW9

CHESTERTONS





Well-located one-bedroom flat, walking distance from oval Tube station. Bright and airy semi open plan living space.

- One Bedroom Flat
- Open Plan
- Furnished
- Walking Distance to Oval Station
- £50 Addition for inclusive Bills
- Available Now

£1,500 pcm

Additional tenant charges apply (fees apply to non-AST tenancies only)

Tenancy Agreement Fee: £300

References per Tenant/Guarantor: £60

Inventory check (approx. £100 – £250 inc. VAT)

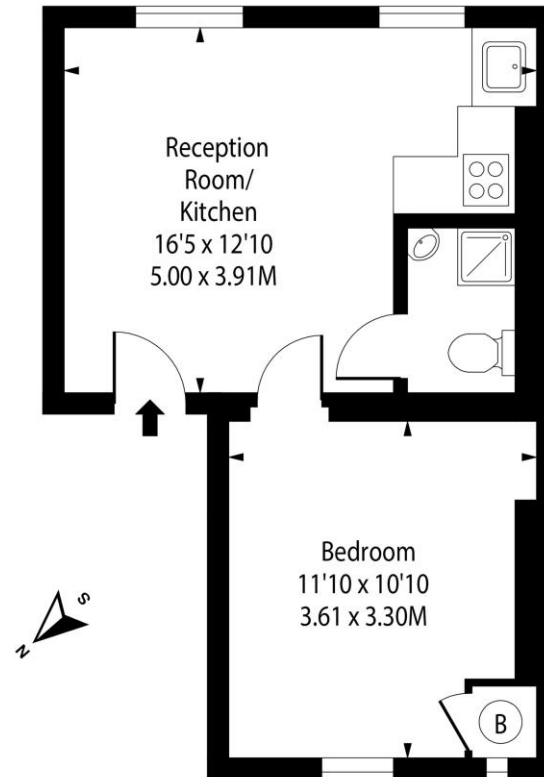
[chestertons.co.uk/property-to-rent/applicable-fees](https://www.chestertons.co.uk/property-to-rent/applicable-fees)

Minimum Term: 12 months
Deposit Required: £1,730.77
Local Authority: London Borough Of Lambeth
Council Tax Band: D
EPC Rating: To be confirmed
Furnished

Chestertons Clapham Common Lettings

[chestertons.co.uk](https://www.chestertons.co.uk)

Clapham Road, SW9



Second Floor

Approx Gross Internal Area **347 Sq Ft - 32.24 Sq M**

Includes Limited Use Area - 15 Sq Ft
Drawn in Accordance with IPMS 3B: Residential
Illustration For Identification Purposes Only - Not to Scale
www.homespacestudio.co.uk - Ref. No. 54365



Chesterton UK Services Limited trading as Chestertons for themselves and for the vendor of this property whose agents they are, give notice that (i) these particulars do not constitute any part of an offer or contract, (ii) all statements contained within these particulars are made without responsibility on the part of Chestertons or the vendor, (iii) whilst made in good faith, none of the statements contained within these particulars are to be relied upon as a statement or representation of fact, (iv) any intending purchasers must satisfy themselves by inspection or otherwise as to the correctness of each of the statements contained within these particulars, (v) the vendor does not make or give either Chestertons or any person in their employment any authority to make or give representation or warranty whatsoever in relation to this property. Wide angle lenses may be used. ©Copyright Chestertons | Chesterton Global Ltd | Registered Office 5th Floor, The Lantern, 75 Hampstead Road, London, NW1 2PL Registered Company Number 05334580.



This paper is
100% recyclable