



Church Lane

Brafield-on-the-Green, Northamptonshire

oriordanbond
SALES & LETTINGS



Church Lane

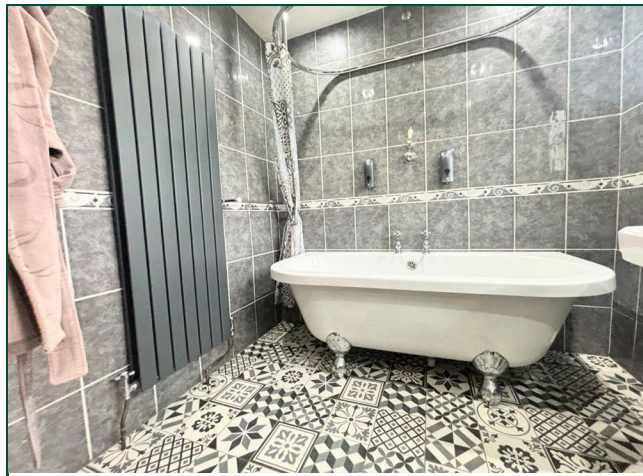
Brafield-on-the-Green
NN7 1BA

Guide Price
£250,000

Set within the countryside and located along a private road is this characterful two bedroom cottage, offered for sale with a complete chain.

The beautifully presented accommodation comprises entrance hall, fitted kitchen and sitting room with feature fireplace and French doors onto the garden. To the first floor are two bedrooms and a family bathroom. Externally there is a beautiful landscaped rear garden complete with summerhouse with power and off road parking for two cars. The property further benefits from gas radiator heating and uPVC double glazing. (A/519/S)

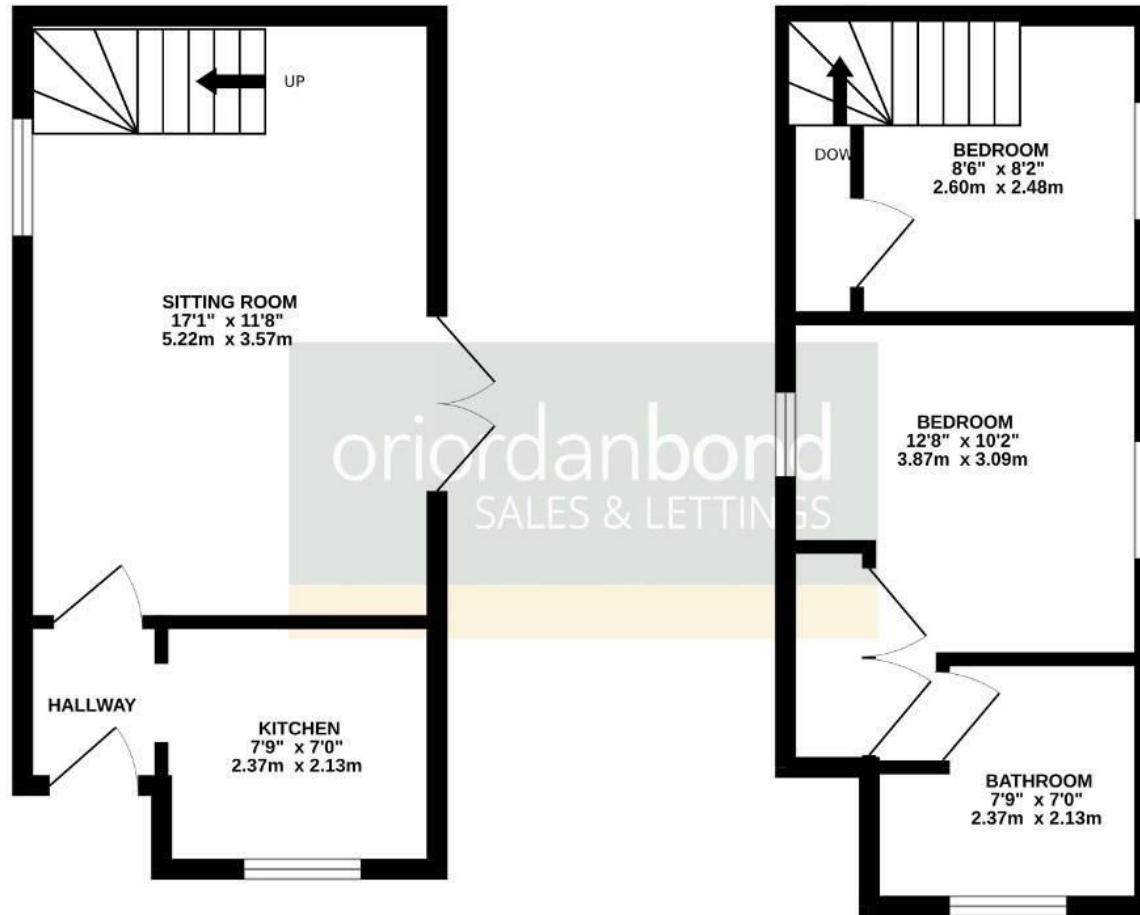
- Characterful two bedroom cottage
- Fitted kitchen
- Three-piece family bathroom suite
- Gas radiator heating
- Landscaped rear garden
- Off road parking





GROUND FLOOR
273 sq.ft. (25.3 sq.m.) approx.

1ST FLOOR
246 sq.ft. (22.8 sq.m.) approx.



TOTAL FLOOR AREA : 519 sq.ft. (48.2 sq.m.) approx.

Whilst every attempt has been made to ensure the accuracy of the floorplan contained here, measurements of doors, windows, rooms and any other items are approximate and no responsibility is taken for any error, omission or mis-statement. This plan is for illustrative purposes only and should be used as such by any prospective purchaser. The services, systems and appliances shown have not been tested and no guarantee as to their operability or efficiency can be given.
Made with Metropix ©2025



Additional information

- Council Tax Band: B
- Energy Efficiency Rating: D

Viewing

Viewing strictly by appointment – details below

Disclaimer

O'Riordan Bond Estate Agents Limited has not tested apparatus, equipment, fittings or services and so cannot verify they are in working order. The buyer is advised to obtain verification from their solicitor or surveyor.

O'Riordan Bond Grange Park Sales
01604 432007

grangepark@oriordanbond.co.uk

