



Nash Way

Coleford, Gloucestershire, GL16 8RQ

£199,950

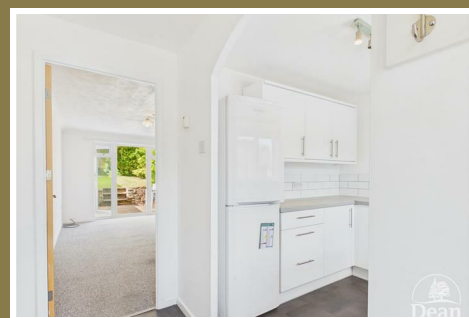


A well presented two bedroom end of terrace home, ideal for first-time buyers, investors or those looking to downsize. Situated in a convenient location, the property benefits from bright & neutral accommodation throughout, an enclosed rear garden, allocated parking & a garage.

The accommodation comprises an entrance hallway leading through to a modern fitted kitchen featuring a range of contemporary wall & base units with plenty of natural light from the front facing window. To the rear of the property is a spacious lounge/dining room offering an excellent living & entertaining space. A door opens directly onto the rear patio, allowing natural light to flood the room & create a seamless connection between the indoor & outdoor areas. The staircase rises to the first floor from the lounge.

Upstairs, the property offers two well proportioned bedrooms. The master bedroom is a generous double room benefiting from built-in wardrobes & pleasant outlooks, while the second bedroom provides versatile accommodation ideal as a guest room, nursery or home office. Completing the first floor is a modern family bathroom fitted with a white suite.

Outside, the property enjoys an enclosed rear garden with a paved patio seating area leading up to a lawned garden bordered by mature shrubs and fencing, providing a private space to relax and entertain. To the front is a lawned garden, while residents also benefit from allocated parking and a single garage located nearby.



Approached via a UPVC double glazed front door into:

Entrance Hallway:

7'11" x 3'8" (2.42m x 1.13m)

Opening to kitchen, door to lounge, radiator, consumer unit, vinyl flooring.

Kitchen:

7'11" x 7'10" (2.42m x 2.41m)

A range of base units, wall units & drawers, worktops, space for a fridge, tiled splashbacks, Beko gas oven & hob, extractor hood, stainless steel sink with drainer unit, UPVC double glazed window to front aspect, boiler, vinyl flooring, power & lighting.

Lounge:

16'4" x 11'9" (5.00m x 3.59m)

Two single panelled radiators, power & lighting, UPVC double glazed door & windows to rear garden, stairs to first floor landing, TV point.

First Floor Landing:

6'1" x 3'2" (1.87m x 0.99m)

Doors to both bedrooms & bathroom, loft access, power & lighting.

Bedroom One:

11'7" x 8'6" (3.55m x 2.61m)

Fitted wardrobes, single panelled radiator, UPVC double glazed window to rear aspect, power & lighting.

Bedroom Two:

10'5" x 6'8" (3.19m x 2.05m)

UPVC double glazed window to front aspect, single panelled radiator, power & lighting, storage cupboard.

Bathroom:

7'7" x 4'11" (2.33m x 1.51m)

P-shaped panelled bath with shower over & glass shower screen, vanity unit with inset wash hand basin, partly tiled walls, W.C, heated towel rail, spotlights, vinyl flooring.

Outside:

The outside of the property offers a low-maintenance yet attractive setting, ideal for those seeking practical outdoor space with room to relax and entertain. To the front, there is a neatly lawned garden complemented by mature shrubs and planting with a pathway leading to the front door. There is access to the off-road parking & to the garage near to the

property.

Garage:
16'4" x 8'0" (4.99m x 2.44m)

To the rear, the property benefits from an enclosed garden enjoying a good degree of privacy. A paved patio area directly off the house creates the perfect space for outdoor dining & entertaining, while steps lead up to a level lawn. The garden is enhanced by attractive stone retaining walls, mature shrubs and planting, creating a pleasant outdoor environment that can be enjoyed throughout the year. There is side access through a gate to the front of the property.



Consumer Notes: Dean Estate Agents Ltd have prepared the information within this website/brochure with care and co-operation from the seller. It is intended to be indicative rather than definitive, without a guarantee of accuracy. Before you act upon any information provided, we request that you satisfy yourself about the completeness, accuracy, reliability, suitability or availability with respect to the website or the information, products, services, or related graphics contained on the website for any purpose.

These details do not constitute any part of any Offer, Contract or Tenancy Agreement.

Photographs used for advertising purposes may not necessarily be the most recent photographs, although every effort is made to update photographs at the earliest opportunity. Any reliance you place on such information is therefore strictly at your own risk. All photographic images are under the ownership of Dean Estate Agents Ltd and therefore Dean Estate Agents retain the copyright. You must obtain permission from the owner of the images to reproduce them.

Tenanted Property – we are not always able to show the most recent condition of a property due to tenants' privacy and we may choose to show the photographs of the property when it was last vacant to at least allow clients some idea of the internal condition. Therefore, we would of course, urge you to view before making any decisions to purchase or rent the property and before any costs.

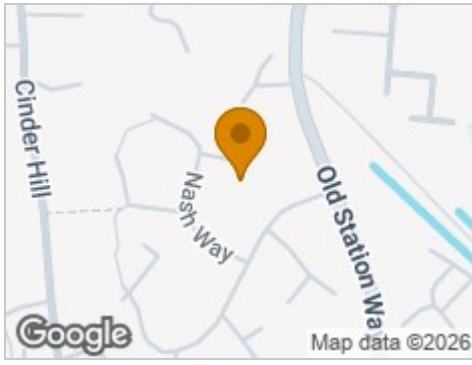
Energy Performance Certificates are supplied to us via a third party and we do not accept responsibility for the content within such reports.

PRC Certificates – Some ex-local authority properties have been repaired in recent years using the PRC Scheme wherein a certificate has been produced by a qualified property engineer. This certificate does not imply the suitability for a mortgage approval and you must satisfy yourself of the work carried out that may meet your lenders criteria.

As with leasehold property or new build development sites, you are likely to be responsible for a contribution to management charges and/or ground rent or a contribution to the development service charge. Please enquire at the time of viewing.

You may also incur fees for items such as leasehold packs and, in addition, you will also need to check the remaining length of any lease before you complete a mortgage application form. Please ask a member of our team for any help required before committing to purchase a property and incurring expense.

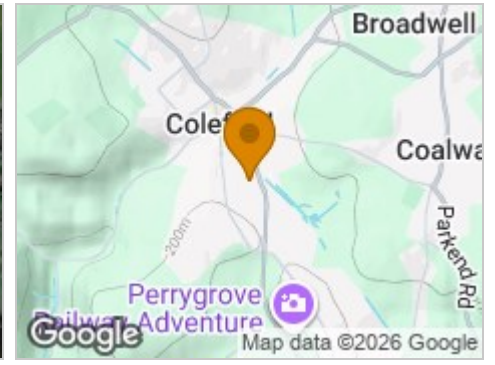
Road Map



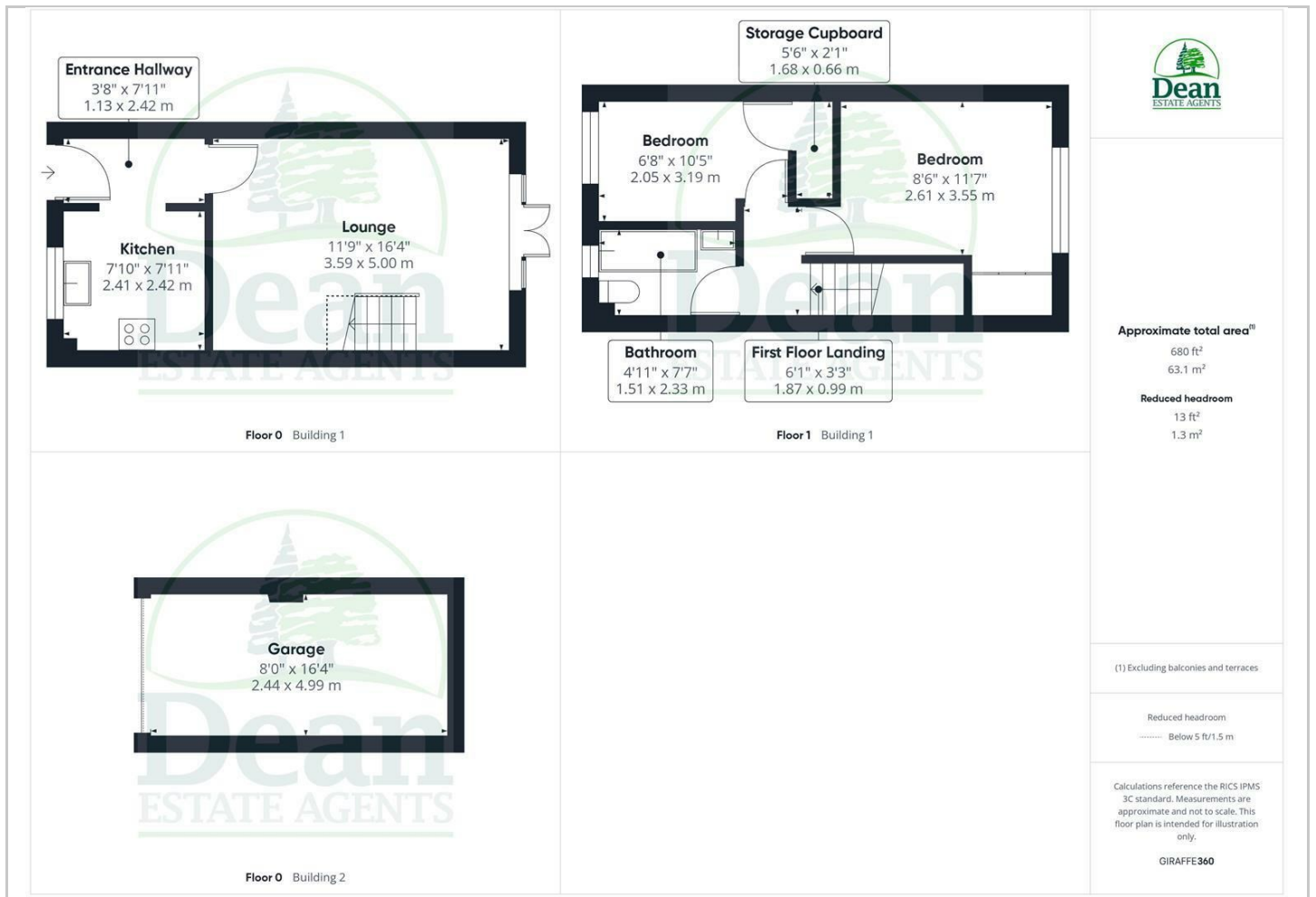
Hybrid Map



Terrain Map



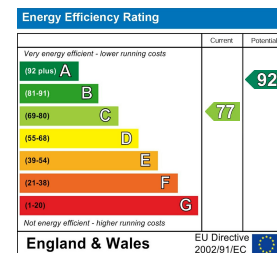
Floor Plan



Viewing

Please contact our Coleford Office on 01594 835751 if you wish to arrange a viewing appointment for this property or require further information.

Energy Efficiency Graph



These particulars, whilst believed to be accurate are set out as a general outline only for guidance and do not constitute any part of an offer or contract. Intending purchasers should not rely on them as statements of representation of fact, but must satisfy themselves by inspection or otherwise as to their accuracy. No person in this firm's employment has the authority to make or give any representation or warranty in respect of the property.